

**OREGON CORNER REFORMATION FORM**

Section 4 Township 2S Range 32E  
 County Umatilla Date: April 25, 1997

Corner Designation: 2S32 A13

Corner to sections 33 and 34 T1S, R32E W.M.  
 and sections 3 and 4 T2S, R32E, W.M.

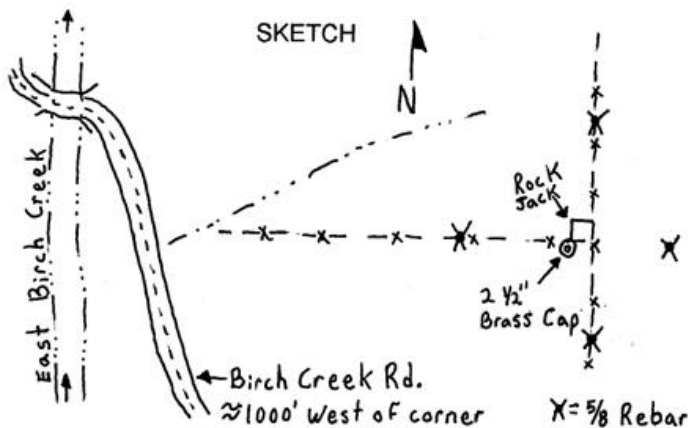
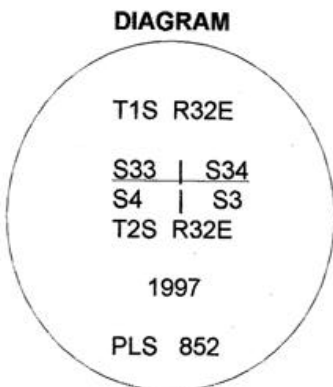
Condition Report Only  
 Not found  
 x Remonumented  
 Unrecorded  
 Surveyed in  
 x Referenced out

Previous Renewals / Surveys, etc.

Corner originally set by David P. Thompson under contract No. 106 Dated August 16, 1864.  
 His record reads: Set stone, 24 x 12 x 8 ins. for corner to sections 3, 4, 33, and 34.

Monument and Accessories found: ( condition and source )

A stone of record dimensions was found firmly in place buried vertically with one third of its length above the ground at the foot of a rock jack at a fence intersection with fence running North, South, and West. There were no marks visible on the stone.



**MONUMENT (S) AND ACCESSORIES SET (Procedures and Description)**

Set a 1 1/4" x 30" Galvanized Iron Pipe with a 2 1/2" brass cap stamped as shown in the diagram above at the position of the record stone. Raised a mound of stone around the monument.

For references, I set four 5/8" by 24" rebars with 1.25" red plastic caps stamped ORLS 852 and WAL5 13922 as described below:

- a rebar bears N10°27'E, 28.50 feet under the existing fence;
- a rebar bears S87°39'E, 27.17 feet;
- a rebar bears S05°21'E, 43.67 feet under the existing fence;
- a rebar bears N86°55'W, 16.34 feet under the existing fence;

Monument and reference locations were surveyed with GPS receivers in stop and go mode.

The bearings are true. The distances are grid.

Location and comments

Compass Declination

Surveyors Seal

RECEIVED BY:  
Umatilla County Surveyor  
 Date: 7-97  
 Rec'd By: KK  
 No. 97-135-R

Firm / Agency  
 Haddock Surveying  
 Address  
 P.O. Box 1574  
 Pendleton, Or. 97801  
 Party Chief  
 Stephen K, Haddock

REGISTERED  
 PROFESSIONAL  
 LAND SURVEYOR

*David L. Haddock*

OREGON  
 JULY 12, 1988  
 DAVID L. HADDOCK  
 352

RECEIVED BY  
Umatilla County Surveyor  
 Date \_\_\_\_\_  
 Rec'd by \_\_\_\_\_  
 No. \_\_\_\_\_

Refer to 97-109-B