

OREGON CORNER RESTORATION FORM

Section 1 Township 2N Range 34E, W.M.

E-23

County Umatilla Date May 19, 1995

CORNER DESIGNATION:  $\frac{1}{4}$  Corner between Section 1 of T2N, R34E, W.M. and Section 6 of T2N, R35E, W.M.

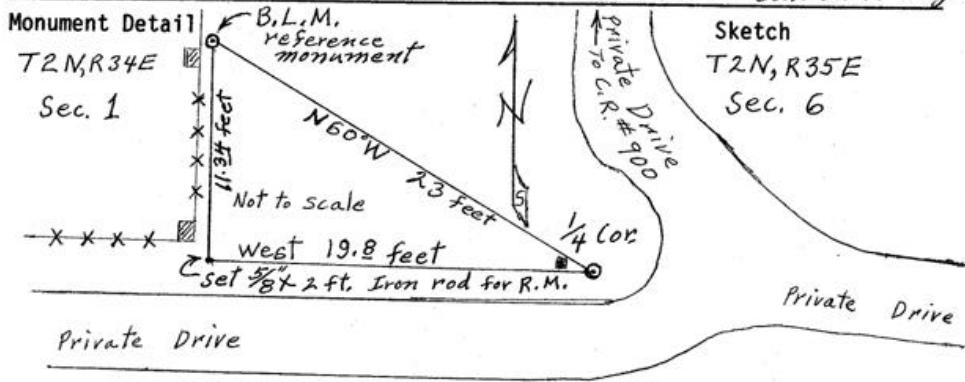
Condition Report Only  
 Not Found  
 Renewed  
 Unrecorded  
 Surveyed In  
 Referenced Out

Previous Renewals/Surveys, etc. Bureau of Land Management R-652

Page 181 Dependent Resurvey of west boundary of section 6, T2N, R35E, W.M. Richard L. Johnson, 2454LS

Monument(s) & Accessories Found: (Condition and Source)

Found  $1\frac{7}{8}$  inch pipe with  $2\frac{3}{8}$  inch brass cap marked  $\frac{1}{4}$  S.1 T2N R34E and  $\frac{1}{4}$  S 6 T2N R35E INDIAN ALLOTMENT Monument set by C.E. Redfield. B.L.M. reference monument a  $3\frac{1}{8}$  inch brass cap on  $2\frac{1}{2}$  inch steel pipe or post with arrow pointing to  $\frac{1}{4}$  corner, bears N60W 23 feet from  $\frac{1}{4}$  corner. The B.L.M. reference monument is about one foot east of N-S fence line and approx. 11 feet north of fence corner. Set by R.L. Johnson, 2454LS Condition is good.



Monument Set (Procedures and Description)

New Accessories

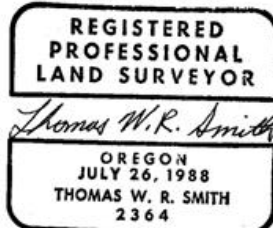
Set  $\frac{5}{8}$  inch by 2 feet iron rod west of  $\frac{1}{4}$  corner 19.8 feet 3 inches below the ground. Fence corner bears N60W 14 inches from iron rod.

Location & Comments

$\frac{1}{4}$  corner located south of county road #900 (also known as Cayuse Rd.) approx 710±10 feet from mile post 13.8 at "T" intersection of Private drives.

Compass Declination 20° East  
 Firm/Agency \_\_\_\_\_  
 Thomas W.R. Smith, PLS  
 Address 51690 Cayuse Rd. Adams, Oregon 97810  
 Party Chief T.W.R. Smith  
 Notes T.W.R. Smith  
 Witness Dwight M. Bartleson, PLS

Surveyor's Seal



Renewal date 6/30/96

RECEIVED BY  
 Umatilla County Surveyor  
 Date 6-9-95  
 Rec'd By AK  
 No. 95-106-R