

OREGON CORNER RESTORATION FORM

COUNTY: Umatilla DATE: 05/13/06

CORNER DESIGNATION: 2N31, J-11, The South One-Quarter Corner of Section 9.

PREVIOUS RENEWALS/SURVEYS ETC.: Corner established by Josiah A. Burnett, under Contract No. 92, dated September 12, 1860. Record states: Set a post for 1/4 Sec. corner, raised stone mound, as per instructions.

Corner was recovered by John Kimbrell in survey recorded at Book 1, Page 348. Record states: "...old gov 1/4 Sec which is original stake in md of stone".

MONUMENT AND ACCESSORIES FOUND:

Accepted a 3 foot diameter mound of stone as best remaining evidence of the original corner. This is a very definite and older mound than those of the line of rock jacks running East, 15 feet North of the corner mound. The line of rock jacks end about 200 feet West of the corner mound.

MONUMENT MARKING DETAIL:

T2N R31E
1 S9
4 S16
2006
PLS 1106

MONUMENT SET:

A the center of the accepted stone mound, set a 2 3/8" brass cap on 1 1/4" x 30" galvanized iron pipe 12" in the ground and raised a mound of stone and earth to the top of cap. Monument marked as shown in monument marking detail.

From which:

A 5/8"x24" iron rebar with 1 1/4" red plastic cap marked "OR PLS 1106 WA PLS 17372" bears North 48 1/2° East, 35.0 feet.

A 5/8"x24" iron rebar with 1 1/4" red plastic cap marked "OR PLS 1106 WA PLS 17372" bears South 33° East, 36.3 feet.

A 5/8"x24" iron rebar with 1 1/4" red plastic cap marked "OR PLS 1106 WA PLS 17372" bears South 68° West, 38.9 feet.

A 5/8"x24" iron rebar with 1 1/4" red plastic cap marked "OR PLS 1106 WA PLS 17372" bears North 65° West, 65.8 feet.

Attached bearing object signs to all rebar accessories. Set steel fence post with witness sign 2' West of monument.

LOCATION AND COMMENTS: Corner is located on rocky ridge top, 15' South of old rock jacks extending East-West.

OREGON STATE PLANE COORDINATE, North Zone, NAD 83(91), International Feet:

N = 730721.80
E = 8600148.62

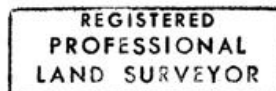
FIRM: William R. Wells, PLS
P.O. Box 1696
Pendleton, OR 97801

COMPASS DECLINATION: 18° East

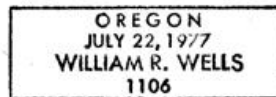
Surveyor's Seal

Witnesses: Jason Wells, LSIT

/2N31J11



William R. Wells



renews 6-30-08

06-462-C