

OREGON CORNER RESTORATION FORM

SECTION 4,3 TOWNSHIP 1 NORTH RANGE 29 EAST

A-13

COUNTY : UMATILLA DATE: JUNE 2007

CORNER DESIGNATION

SECTION CORNER
CLOSING CORNER

- CONDITION REPORT ONLY
- NOT FOUND
- RENEWED
- UNCOVERED
- SURVEYED IN
- REFERENCED

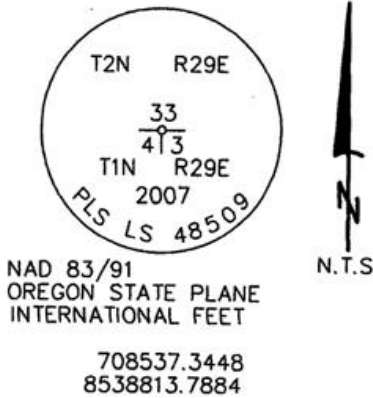
PREVIOUS RENEWALS / SURVEYS, ETC.

ORIGINALLY SURVEYED IN 1858 BY THOMPSON UNDER CONTRACT #79. HE SET A POST IN A MOUND OF EARTH.
SURVEYED IN 1859 BY THOMPSON UNDER CONTRACT #83. HE SET A POST IN A MOUND OF EARTH.
SURVEYED IN 1860 BY CARTEE UNDER CONTRACT #88. HE SET A POST IN A MOUND OF EARTH.

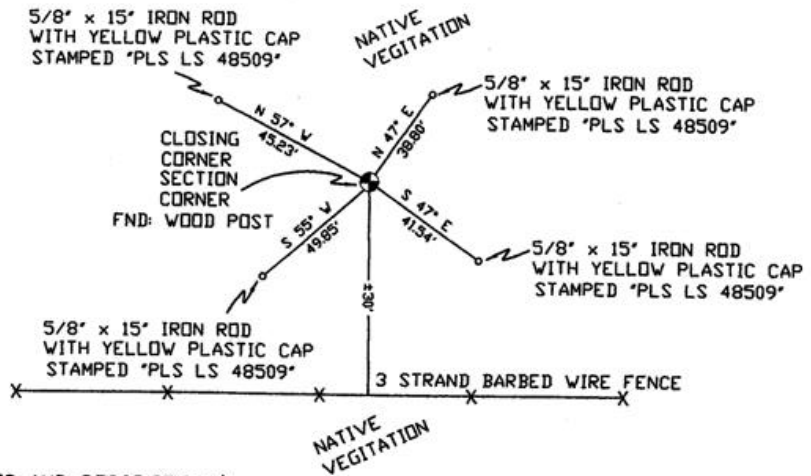
MONUMENTS AND ACCESSORIES FOUND: CONDITION AND SOURCE

FOUND DECAYED WOOD POST

MONUMENT DETAIL



SKETCH



MONUMENT SET (PROCEDURES AND DESCRIPTION)

SET 2 3/8" BRASS CAP AT LOCATION OF DECAYED WOOD POST WITH A ± 2' DIA. ROCK COLLAR ± 8" HIGH LAY DECAYED WOOD POST ALONG SIDE

NEW ACCESSORIES FROM WHICH

- A 5/8" x 15" IRON ROD WITH A PLASTIC CAP STAMPED "PLS LS 48509" LIES N 57° W, 45.23 FEET.
- A 5/8" x 15" IRON ROD WITH A PLASTIC CAP STAMPED "PLS LS 48509" LIES N 47° E, 38.80' FEET.
- A 5/8" x 15" IRON ROD WITH A PLASTIC CAP STAMPED "PLS LS 48509" LIES S 47° E, 41.54 FEET.
- A 5/8" x 15" IRON ROD WITH A PLASTIC CAP STAMPED "PLS LS 48509" LIES S 55° W, 49.85 FEET.

LOCATION AND COMMENTS

FROM INTERSECTION OF SPIKES GULCH WITH NORTH BOUNDARY OF TOWNSHIP 1 NORTH, RANGE 29 EAST W.M. GO EAST ± 2.1 MILES TO CORNER.

COMPASS DEC.

17° EAST

FIRM/AGENCY

PRIMM LAND SURVEYING
1340 N.E. 4TH STREET
P.O. BOX 1322
HERMISTON, OREGON 97838

PARTY CHIEF

KEITH P. PRIMM

NOTES

WITNESS

CODY L. HANSEN

SURVEYOR'S SEAL

REGISTERED
PROFESSIONAL
LAND SURVEYOR

Brit L. Primm
OREGON
JULY 13, 1999
BRIT L. PRIMM
48509

EXPIRATION DATE: 31 JAN 08

07-260-C