

USDA-FOREST SERVICE

Index File No. V-17

CORNER RECORD (SEARCH)

(Ref. FSM 7151.4)

Tract or Survey No. _____
Cor. V-17
No. _____

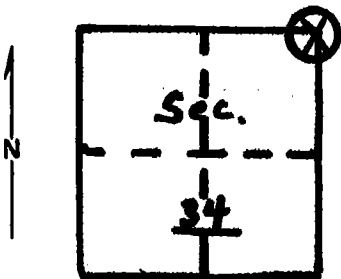
T 1S R. 36E

R.D. Pendleton County Umatilla

Merid. Willamette

N.F. Umatilla State Oregon

CORNER DIAGRAM



DESCRIBE CORNER MONUMENT FOUND

Material: Basalt stone
Size: 12"x9"x6"
Height Above Ground: 4"
Condition: Fair
Markings: 2 notches on East face

2

DESCRIBE BEARING TREES OR OTHER OFFICIAL ACCESSORIES FOUND

Down, rotten 8" Dia. Fir - N30W. - 7' Dist., blazed, scribed: 1S R36 E
22" Fir - S25W - Approx. 45' Dist. with closed NE blaze. Stump hole - S25E - 30' Dist.
10" Down fir - N35E - 10' Dist. (possible B.T.)

3

PHOTO IDENTIFICATION DATA

Photo No. _____
Filed At. _____
Object Ident. _____
Ident. By _____
Signature

6

7

PLANE COORDINATE POSITION DATA

State _____ Zone _____
X _____
Y _____
Estab. By _____
Agency

8

DESCRIBE CORNER LOCATION RELATIVE TO NEAR-BY FEATURES, ALSO HOW TO REACH CORNER

Location is approx. 200' West of N-S Draw and approx. same as Dist. South of E-W Draw.

4

Signature
Bill Moore

Title
Eng, Tech,

Division _____

Headquarters _____

Date
7/77

7100-52-(3/68)

5

CORNER RECORD (PERPETUATION)

GPO 902-678

MONUMENT : DESCRIBE NEW MONUMENT SET, OR WORK DONE TO PRESERVE EXISTING MONUMENT

9

ACCESSORIES : DESCRIBE NEW BT'S WITNESS OBJECTS ETC. ESTABLISHED, OR WORK DONE TO PRESERVE EXISTING EVIDENCE

I placed a blank FS bearing tree poster and attention poster on the 22" Fir and bearing tree poster on the N.W. B.T. Placed yellow ribbon under the corner stone.

10

Work Done By _____ Title _____ Date _____ State Registration No. or Agency _____

Certified Cor. Record Prepared ? Yes No Filed At: _____ Date _____

11

REMARKS

12

Index File No. T. R. M. Tract or Surv. No. Cor. 13