

Form 874-9

U. S. DEPARTMENT OF AGRICULTURE
FOREST SERVICE

Umatilla

NATIONAL FOREST

CORNERS OF THE PUBLIC SURVEY

T. 1 S. R. 36 E. W Mer.

Section

Corner common to Sections

33 34 27 and *28*

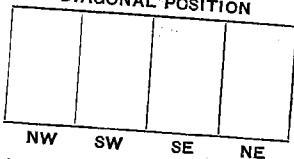
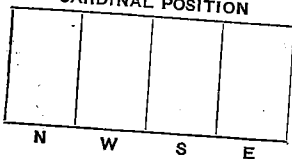
DESCRIPTION OF CORNER

Corner consists of a *Stone set in and*
Dimension above ground *not legible* inches.

Sketch grooves, letters, figures, or notches, on proper face or edge.

CARDINAL POSITION

DIAGONAL POSITION



Mound of _____ is located _____

Pits are located _____

Sketch markings of Bearing Trees (or Rocks) in proper box and fill blanks below, giving bearings from Corner to Trees and Distances in Links.

<i>Sketch</i>	T 15 S 33	T 18 E 33	T 22 N 36 E S 27
			BT

Species	<i>2 P</i>	<i>2 P</i>	<i>WL</i>	<i>2 P</i>
Diameter	<i>18"</i>	<i>26"</i>	<i>20"</i>	<i>18"</i>
Bearing	<i>N 30 W</i>	<i>S 88 W</i>	<i>S 67 E</i>	<i>N 35 E</i>
Distance	<i>20 ft</i>	<i>22 ft</i>	<i>28 ft</i>	<i>40 ft</i>

Do you believe this to be a genuine Land Office Corner? *Yes*

If not, why? _____

Signature

W. R. Tucker

Date

May 14 20

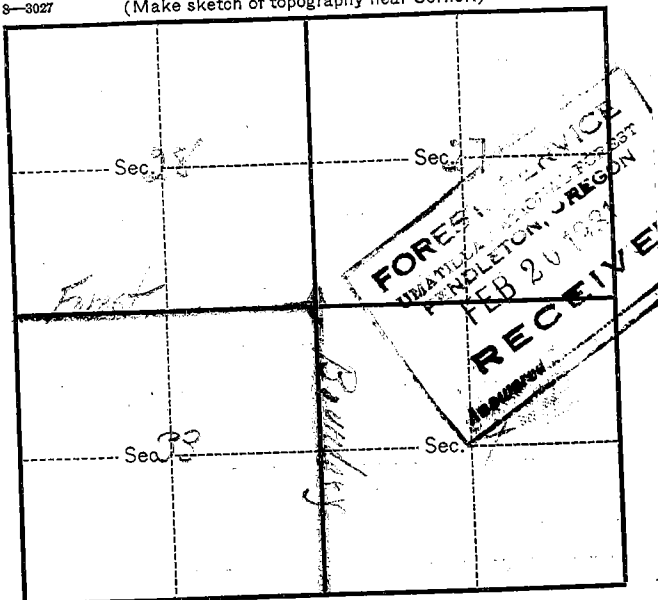
Title

F. R.

T. 15 R. 36 E W Mer.

8-3027

(Make sketch of topography near Corner.)



Metal Location Poster is on a Y.P.
tree 18 inches diameter, on the Stump cut in
side of Opening
from which this Corner bears S 30° E
20 ft. chains distant.

Give any further facts which will aid in finding this
Corner again.

Corner in Opening about
1 acre in size, the land
marks a marks tree.
About 1/4 mile west of Miller
Sp. Top Prairie sheepman trail
where sections line is blazed
and X on tree.

U. S. Department of Agriculture

FOREST SERVICE

Marquette NATIONAL FOREST

CORNERS OF THE PUBLIC SURVEY

T. 15 R. 36E W. Mer.

Section Corner common to Sections

27, 28, 33, and 34

Corner consists of a Stake & Rock (not) in place

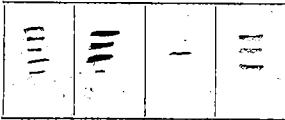
State condition Stake & Rock

Dimensions above ground 222 x 46 inches.

Sketch grooves, letters, figures, or notches, on proper face or edge.

CARDINAL POSITION

DIAGONAL POSITION



T15 R36E S28	T15 R36E S33	T15 R36E S34	T15 R36E S27
--------------------	--------------------	--------------------	--------------------

N

W

S

E

NW

SW

SE

NE

Mound of _____ is located _____

Pits are located _____

Sketch markings of Bearing Trees (or Rocks) in proper box and fill blanks below, giving bearings from Corner to Trees and Distances in Links.

T15
R36E
S28

T15
R36E
S33

T15
R36E
S34

T15
R36E
S27

BT

BT

BT

BT

Species SP Fraxinus SP

Diameter 19" 27" 19 1/2" 19"

Bearing N30W S85W S65E N45E

Distance 30' 7.8' 100' 41'

Do you believe this to be a genuine Land Office Corner? Yes

If not, why? _____

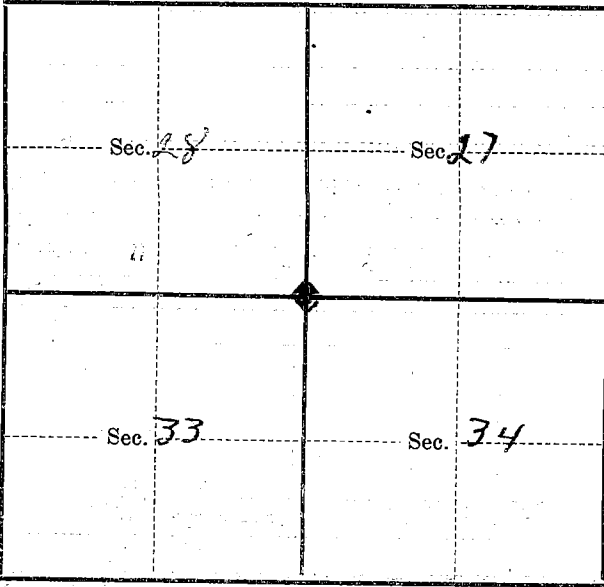
James L. Morrison
(Signature)

11-8-37
(Date)

Inspector
(Title)

T. 15 R. 36E W Mer.

(Make sketch of topography near Corner)



Metal Location Poster is on a *VP Beech tree*
tree *19* inches diameter, on the *S*
side of *tree*
from this Corner bears *S 30 E*
20 ft. chains distant.

Give any further facts which will aid in finding this
Corner again.

*Corner is on N side of round
spring about 200 ft in diameter*

USDA-FOREST SERVICE

Index
File No. V-13

CORNER RECORD (SEARCH)

(Ref. FSM 7151.4)

Tract or Survey No. _____
Cor. No. _____

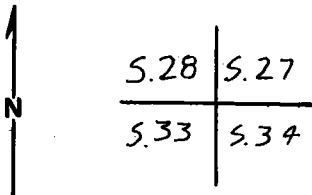
T 1S R. 36E

R.D. _____ County UNION

Merid. WILLAMETTE

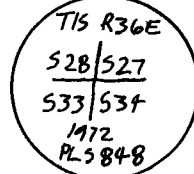
N.F. UMATILLA State OREGON

CORNER DIAGRAM



DESCRIBE CORNER MONUMENT FOUND

A 3" DIAM. BRASS CAP SET IN A 2 1/2" O.D. IRON PIPE IN A ROCK MOUND, CAP IS STAMPED PER SKETCH.



DESCRIBE BEARING TREES OR OTHER OFFICIAL ACCESSORIES FOUND

- ① A 24" D.B.H. PONDEROSA PINE, N.30°W, 21.2', FACE NEARLY HEALED, SCRIBE VISIBLE.
- ② A 30" D.B.H. PONDEROSA PINE, S.85°W, 78', WITH SCRIBING VISIBLE ON NEARLY HEALED FACE.
- ③ A 20" D.B.H. (24") PONDEROSA PINE, N.35°E, 41.5' (41.0')
- ④ A 22" D.B.H. TAMARACK SNA6, S.65°E, 101.4' (102.0') WITH SCRIBES VISIBLE
- ⑤ A 12" D.B.H. LODGEPOLE PINE, S.61°E, 104', (103.6') SOME SCRIBES VISIBLE, PITCHED OVER

PHOTO IDENTIFICATION DATA

Photo No. _____
Filed At. _____
Object Ident. _____
Ident. By _____
Signature

PLANE COORDINATE POSITION DATA

State _____ Zone _____
X _____
Y _____
Estab. By _____
Agency

DESCRIBE CORNER LOCATION RELATIVE TO NEAR-BY FEATURES, ALSO HOW TO REACH CORNER

AT MT. EMILY TURNOFF, GO NORTH ON F.R. 31, 3.3 MILES, TURN LT. ON 023 ROAD, GO 0.7 MILES, SEE LOCATION TAG ON 4"x4" POST ON LT., COR. IS 2500' EAST, FOLLOW POSTED BOUNDARY,

Signature

Clayton J. M. [unclear]

Title
LAND SURVEYOR

Division

Headquarters

Date
SEPT. 14, 1982

7100-52-(3/68)

CORNER RECORD (PERPETUATION)

MONUMENT: DESCRIBE NEW MONUMENT SET, OR WORK DONE TO PRESERVE EXISTING MONUMENT

ACCESSORIES : DESCRIBE NEW BT'S WITNESS OBJECTS ETC. ESTABLISHED, OR WORK DONE TO PRESERVE EXISTING EVIDENCE

- ① A 8" D.B.H. DOUGLAS FIR, N. 37° W., 42.2' SCRIBED T15 R36E S28 BT.
- ② A 6" D.B.H. DOUGLAS FIR, N. 68° E., 59.3' SCRIBED T15 R36E S27 BT.
- ③ A 8" D.B.H. PONDEROSA PINE, S. 32° E., 51.5' SCRIBED T15 R36E S34 BT.

BRASS RPLS 1910 WASHER BETWEEN B & T ON NEW B.T'S.

Work Done By C.J. MARTIN Title LAND SURVEYOR Date 9-14-82 State Registration No. or Agency _____

Certified Cor. Record Prepared ? Yes No Filed At: _____ Date _____

REMARKS

Index
 File No. V-13
 T 1S R. 36 E
 Merid. Willamette

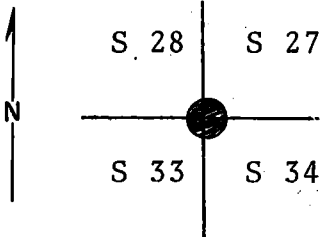
CORNER RECORD (SEARCH)

(Ref. FSM 7151.4)

Tract or
 Survey No. V 13 Cor. No. Sec ~~74~~

R.D. Pendleton County Umatilla
 N.F. Umatilla State Oregon

CORNER DIAGRAM



DESCRIBE CORNER MONUMENT FOUND

Brass cap set summer 1972. See reverse side.

DESCRIBE BEARING TREES OR OTHER OFFICIAL ACCESSORIES FOUND

Found a 12"x10"x10" basalt stone, loose in a mound of stone with marks faintly visible.
 Found a 22" tamarack snag with all scribing visible, bearing S65°E 102 ft. dist. from the corner position.
 Found a 24" pine with all scribing visible, bearing N35°E 41 ft. dist. from the corner position.
 Found a 30" pine with scribing visible bearing S85°W

DESCRIBE CORNER LOCATION RELATIVE TO NEAR-BY FEATURES, ALSO HOW TO REACH CORNER

78 ft. dist. from the corner position.
 Found a 24" pine with scribing visible, bearing N30°W 21.2 ft. dist. from the corner position.

PHOTO IDENTIFICATION DATA

Photo No. _____
 Filed At. _____
 Object Ident. _____
 Ident. By _____
 Signature

PLANE COORDINATE POSITION DATA

State _____ Zone _____
 X _____
 Y _____
 Estab. By _____
 Agency



Signature _____ Title _____ Division _____ Headquarters _____ Date _____

CORNER RECORD (PERPETUATION)

MONUMENT: DESCRIBE NEW MONUMENT SET, OR WORK DONE TO PRESERVE EXISTING MONUMENT

Set a 30x2½" iron pipe with 3" brass cap marked as shown, 20" in the ground to solid rock & placed the original stone South & alongside the pipe & raised a mound of stone around the pipe, for the corner to secs, 28, 27, 33 & 34. From which a new bearing tree:

9

ACCESSORIES : DESCRIBE NEW BT'S WITNESS OBJECTS ETC. ESTABLISHED, OR WORK DONE TO PRESERVE EXISTING EVIDENCE

A logpole pine 12" diam. bears S61°E 103.6 ft. dist. marked T1S R36E S34 BT.

Distance taken to a brass washer in the blaze of the new bearing tree. Set a steel fence post approx. 5 ft. West from corner with a Forest Boundary sign attached.

Used a steel tape & magnetic compass with declination = 20° East.

10

Work Done By D.M. Ferguson Title Land Surveyor Date 7/12/69 State Registration No. 848
or Agency _____

Certified Cor. Record Prepared ? Yes No Filed At: Umatilla Co. Courthouse Date 11/16/72 11

REMARKS

12