

Index  
File No. A-24

T 1S R. 36E

Merid. WILLAMETTE

CORNER RECORD (SEARCH)

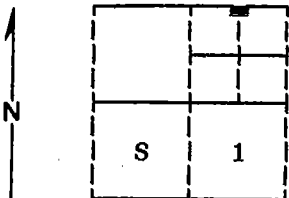
(Ref. FSM 7151.4)

R.D. WALLA WALLA County UMATILLA

N.F. UMATILLA State OREGON

Tract or  
Survey No. \_\_\_\_\_  
Cor.  
No. \_\_\_\_\_

CORNER DIAGRAM



DESCRIBE CORNER MONUMENT FOUND

Corner not previously established.

DESCRIBE BEARING TREES OR OTHER OFFICIAL ACCESSORIES FOUND

Corner not previously established.

PHOTO IDENTIFICATION DATA

Photo No. \_\_\_\_\_

Filed At. \_\_\_\_\_

Object Ident. \_\_\_\_\_

Ident. By \_\_\_\_\_

*Signature*

PLANE COORDINATE POSITION DATA

State \_\_\_\_\_ Zone \_\_\_\_\_

X \_\_\_\_\_

Y \_\_\_\_\_

Estab. By \_\_\_\_\_

*Signature*

Title  
Surveyor

Division

Headquarters

Date

8-24-89

FS-7100-52 (3/68)

**CORNER RECORD (PERPETUATION)**

**MONUMENT: DESCRIBE NEW MONUMENT SET, OR WORK DONE TO PRESERVE EXISTING MONUMENT**

Set a 2½"x30" aluminum pipe with aluminum cap marked as shown:  
Pipe is set 30 inches in the ground.

T1N R37E

E1/16 S 1  
T1S R36E  
1989  
OPLS 644

**ACCESSORIES : DESCRIBE NEW BT'S WITNESS OBJECTS ETC. ESTABLISHED, OR WORK DONE TO PRESERVE EXISTING EVIDENCE**

New BTs:

A 8 inch diameter Spruce bears S15°E, 25.55 feet marked E1/16 S1 BT

A 9 inch diameter Western Larch bears S41°W, 18.73 feet marked E1/16 S1 BT

Painted a 6 inch red band around all bearing trees and attached 54-3 and 54-9 signs.

Set a steel fence post approximately 5 feet South with 54-9 and 54-2 signs attached.

Work Done By D.I. Griffith Title Surveyor Date 8-15-89 State Registration No. OPLS 644  
or Agency

Certified Cor. Record Prepared ? Yes  No Filed At: Umatilla Co. Surveyor's Office Date 9-89

**REMARKS**

Witnesses: Jeff Petersen and Rick Robinson

Index File No. A-24 T. 1S R. 36E W.M. Tract or Surv. No. Cor.