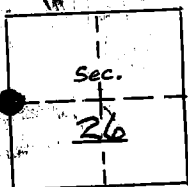


RECOVERY NOTES

PROPERTY CORNER INVESTIGATION

LOCATION



T. 15 R. 35E

Mer. Ill. State Ore.

Forest Umatilla Dist. Pendleton

LEGEND

- Corner searched—no evidence
- Corner or accessory found
- Corner marked by perm. mon.

DESCRIPTION OF FOUND CORNER

MATERIAL: Brass Cap SIZE: _____

HEIGHT ABOVE GROUND: _____ CONDITION: _____

MARKINGS: _____

DESCRIPTION OF FOUND ACCESSORIES

* B.T. - 9.4" PP N 88° 23' 10" E
57.0 distance.

* B.T. 12.3" DF 540° 28' 45" W
34.3' distance.

* B.T. 18" stump, 30" high. Original BT
N 4° E 9' 8" distance

NOTE: Indicate full investigative details on back of form.

PHOTO IDENTIFICATION

Symbol & date _____ Line or Roll _____ Exposure _____

How Identified _____ Where filed _____

RECOVERED BY: Branley Tupper

DATE: _____

TITLE: Forestry Tech.

R6-7100-59 (9/72)

over

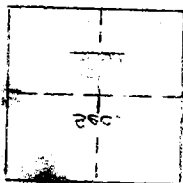
DATE: _____ LISTED: _____
 * Bearings are from BT's
 to corner.

The stamp BT is believed to
 be the original BT. A portion
 of the scribbling is visible
 on the face facing the
 corner about 8" above ground.

DESCRIPTION OF FOUND ACCESSORIES

MARKINGS: _____
 METRIC SCALE FOUND: _____ CONDITION: _____
 MATERIAL: _____ SIZE: _____

DESCRIPTION OF FOUND CORNER



CORNER

- CORNER MARKED BY BERM. MON.
- ⊗ CORNER OF SUCCESSFUL TOWER
- CORNER DEVELOPED-NO EVIDENCE

LEGEND

DATE: _____ TIME: _____
 NO. _____ DATE: _____
 I. _____

EXCESSIVE CORNER INVESTIGATION

EXCESSIVE NOTES