

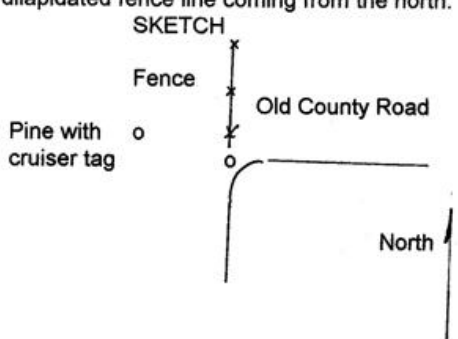
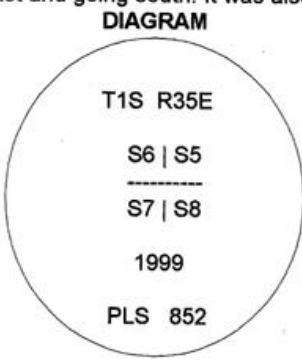
**OREGON CORNER RESTORATION FORM**

Section 8 Township 1S Range 35E  
 County Umatilla Date: December 28, 1999

Corner Designation: 1S35E5 Condition Report Only  
 Not found  
 Corner common to Sections 5, 6, 7 and 8.  Remonumented  
 Unrecorded  
 Surveyed in  
 Referenced out

Previous Renewals / Surveys, etc.  
 Corner originally set by Currin and Noland under special contract dated May 4, 1887.  
 His record reads: Set basalt stone, 12 x 12 x 8 ins., 8 ins. in ground for Cor. to Secs. 5, 6, 7 & 8,  
 marked 5 notches on S. & E. edges from which, A pine, 18 ins. diam., brs. S.75°E, 13 lks.  
 dist., marked T.1 S., R.35 E., S.8, B. T.; A pine 22 ins. diam., brs. S.84°W., 47 lks. dist. marked  
 S. 7, B. T. ; a pine, 20 ins. diam., brs. N.32°E., 83 lks. dist. marked S. 5, B. T.

Monument and Accessories found: ( condition and source )  
 Found remnants of rotted pine stump in section 7, S84°W, 31.0' from the new monument  
 location. A 31" Ponderosa Pine was nearby with an old illegible Oregon State Forestry cruiser  
 tag. The monument was aligned with the centerline of an old county road coming from the  
 east and going south. It was also aligned with a dilapidated fence line coming from the north.



**MONUMENT (S) AND ACCESSORIES SET (Procedures and Description)**  
 Set a 1 1/4" x 30" Galvanized Iron Pipe with a 2 1/2" brass cap stamped as shown in the diagram  
 above N84°E, 31.02'. Soil depth was only 8" to rock. Set base of pipe on rock and erected a  
 large mound of stone around the monument.

For references, I scribed trees as follows: The 31" Ponderosa Pine with the cruiser tag bears  
 N37 1/2°W, 21.9' and was scribed in an open blaze, T1S R35E S6 BT; An 8" Ponderosa Pine  
 bears N56 3/4°E, 30.9' and was scribed T1S R35E S5 BT; A 12" Ponderosa Pine bears  
 S20 1/2°E, 62.8' and was scribed T1S R35E S8 BT; A 12" Ponderosa Pine bears S12°W  
 59.1' and was scribed T1S R35E, S7 BT. I tacked a 3/4" diameter aluminum washer stamped  
 RLS 852 between the scribed letters B and T on each witness tree.

Monument and reference locations were surveyed with staff compass and cloth tape from the  
 corner monument.

Location and comments	Compass Declination 20°	Surveyors Seal
RECEIVED BY: <u>Umatilla County Surveyor</u> Date: <u>12/30/99</u> Rec'd By: <u>David L. Haddock</u> No. <u>99-314-B</u>	Firm / Agency Haddock Surveying Address P.O. Box 1574 Pendleton, Or. 97801 Party Chief David L. Haddock Witness	<div style="border: 1px solid black; padding: 5px; text-align: center;">                     REGISTERED                      PROFESSIONAL                      LAND SURVEYOR                 </div> <p><i>David L. Haddock</i></p> <div style="border: 1px solid black; padding: 5px; text-align: center;">                     OREGON                      JULY 12, 1988                      DAVID L. HADDOCK                      852                 </div>