

G-9

OREGON CORNER RESTORATION FORM

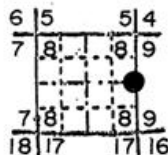
Section 8 Township 1N Range 35E

County Umatilla Date 12/17/87

G-9

Corner Designation

1/4, 8 | 9



- Condition Report Only
- Not Found
- Renewed
- Unrecorded
- Surveyed In
- Referenced Out

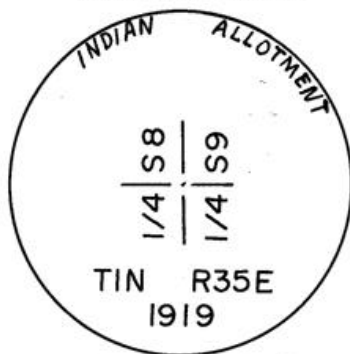
Previous Renewals/Surveys, etc.

Set by Currin & Nolan in 1887, reestablished in Indian Allotment surveys in 1919.

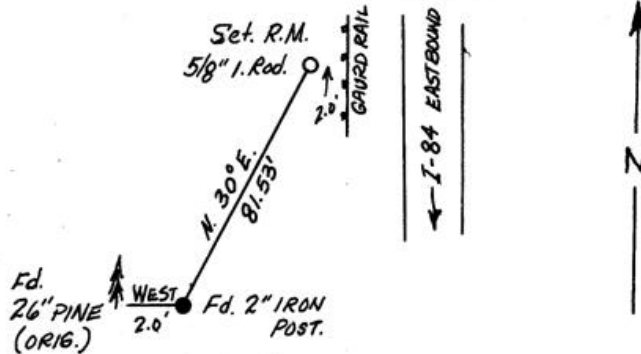
Monument(s) & Accessories Found: (Condition and Source)

Found 2" iron post with brass cap firmly set projecting 10" above ground from which bears the following original BT: a 26" (4") pine bears west, 2.0' to face with scribing "1/4" visible in partially healed blaze.

Monument Detail



Sketch



Monument Set (Procedures and Description)

None

New Accessories

Set as reference 5/8"x30" iron rod with plastic cap marked "Oregon State Parks" N30°E, 81.53'. Rod is 2.0' west of I-84 eastbound guardrail and flush with ground. Set blank orange Carsonite post 0.8' west.

Location & Comments

Drawing not to scale. References by hand compass, tape and EDM.

Compass Declination 20°E

Firm/Agency Oregon State Parks & Recreation Div.

Address 525 Trade Street SE Salem OR 97310

Party Chief R.Hill  
Notes R.Hill

Witness L. Boge, H. Hanson

Seal

REGISTERED PROFESSIONAL LAND SURVEYOR

*John E. Hollingsworth*

OREGON  
JUL 9, 1968  
JOHN E. HOLLINGSWORTH  
691

RECEIVED BY

Umatilla County Surveyor

Date 6-8-88

Rec'd By [Signature]

No. 88-39-B

