

**OREGON CORNER RESTORATION FORM**

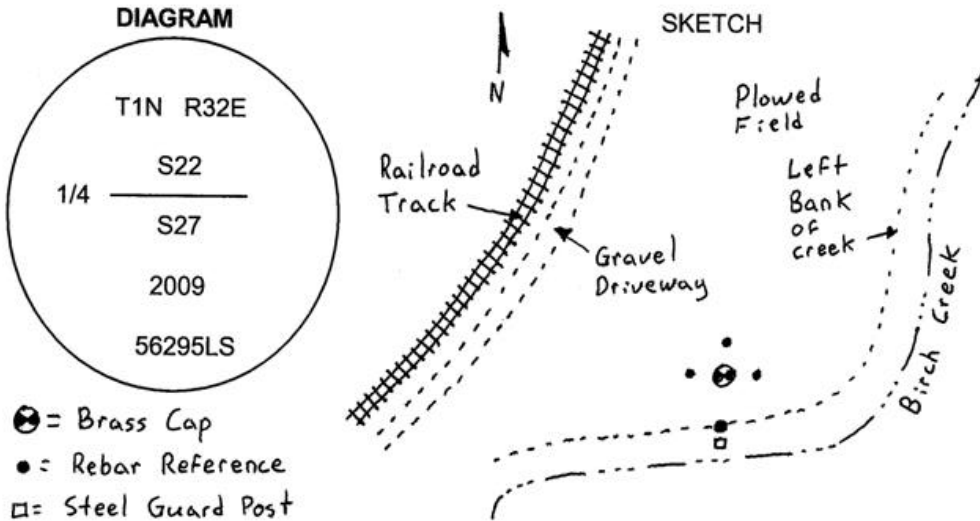
Section 22 Township 1N Range 32E  
 County Umatilla Date: September 10, 2009

Corner Designation: 1N32R15  
 Quarter corner common to sections 22 and 27,  
 T1N, R32E, W.M., Umatilla County, Oregon.

Condition Report Only  
 Not found  
 Remonumented  
 Unrecorded  
 Surveyed in  
 Referenced out

Previous Renewals / Surveys, etc.  
 Corner originally set by Daniel Chaplin under contract No. 107 dated September 21, 1864.  
 His record reads: Set post for 1/4 sec. corner from which a birch, 10 ins. diam., bears  
 S. 60° E. 7 lks. dist. A yellow wood 4 ins. diam. bears N. 45° W. 8 lks. dist.

Monument and Accessories found: ( condition and source )  
 None. This point falls in a farmed field. Also, the Army Corps of Engineers removed all of the  
 riparian vegetation along this creek in the 1960's and channelized the creek.



**MONUMENT (S) AND ACCESSORIES SET (Procedures and Description)**

I set a 1 1/2" x 30" galvanized iron pipe with a 2 1/2" brass cap stamped as shown in the diagram above at the proportioned point. The cap is 24 inches below the surface of the plowed field.

For references, I set four 5/8" by 24" iron rebars with 1 1/4" orange plastic caps stamped WTS and 56295LS as described below:

- an iron rebar bears N89°14'03"W, 24.22 feet, 2 feet below the surface of the field;
- an iron rebar bears N05°23'13"E, 25.67 feet, 2 feet below the surface of the field;
- an iron rebar bears N88°53'32"E, 25.58 feet, 2 feet below the surface of the field;
- an iron rebar bears S03°08'45"W, 62.89 feet;

The monument was set and references were tied using a Trimble R7/R8 RTK GPS system.

Location and comments  
 NAD 83/1991 State Plane Coordinate  
 Oregon North Zone  
 N = 689,087.12 ift  
 E = 8,638,303.15 ift

Compass Declination  
 Firm / Agency  
 Witness Tree Surveying  
 Address  
 P.O. Box G  
 Pilot Rock, Or. 97868  
 Party Chief  
 Stephen K, Haddock

Surveyors Seal

RECEIVED BY:  
 Umatilla County Surveyor  
 Date: 6-10  
 Rec'd By: KK  
 No. 10-93-C

REGISTERED  
 PROFESSIONAL  
 LAND SURVEYOR

*Stephen K. Haddock*

OREGON  
 JULY 9, 2001  
 STEPHEN K. HADDOCK  
 56295LS

RENEWAL DATE 6-30-11