

# OREGON CORNER RESTORATION FORM

SECTION 19.30 TOWNSHIP 1 NORTH RANGE 29 EAST

R-1

COUNTY : UMATILLA DATE: JULY 2007

CORNER DESIGNATION

SECTION CORNER

- CONDITION REPORT ONLY
- NOT FOUND
- RENEWED
- UNCOVERED
- SURVEYED IN
- REFERENCED

PREVIOUS RENEWALS / SURVEYS, ETC.

ORIGINALLY SURVEYED IN 1858 BY THOMPSON UNDER CONTRACT #79. HE SET A POST IN A MOUND OF EARTH.

SURVEYED IN 1859 BY THOMPSON UNDER CONTRACT #83. HE SET A POST IN A MOUND OF EARTH.

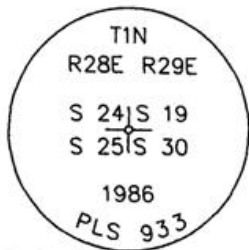
SURVEYED IN 1860 BY CARTEE UNDER CONTRACT #88. HE SET A POST IN A MOUND OF EARTH.

KRUMBEIN IN 1985 SURVEY # D-828-K-655

MONUMENTS AND ACCESSORIES FOUND: CONDITION AND SOURCE

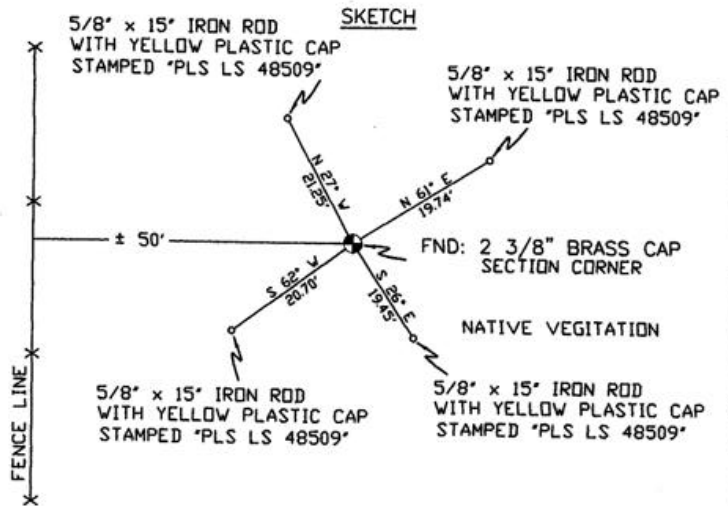
FOUND 2 3/8" BRASS CAP

MONUMENT DETAIL



NAD 83/91  
OREGON STATE PLANE  
INTERNATIONAL FEET

687290.3359  
8522775.5388



MONUMENT SET ( PROCEDURES AND DESCRIPTION )

NEW ACCESSORIES FROM WHICH

- A 5/8" x 15" IRON ROD WITH A PLASTIC CAP STAMPED "PLS LS 48509" LIES N 27° W, 21.25 FEET.
- A 5/8" x 15" IRON ROD WITH A PLASTIC CAP STAMPED "PLS LS 48509" LIES N 61° E, 19.74 FEET.
- A 5/8" x 15" IRON ROD WITH A PLASTIC CAP STAMPED "PLS LS 48509" LIES S 26° E, 19.45 FEET.
- A 5/8" x 15" IRON ROD WITH A PLASTIC CAP STAMPED "PLS LS 48509" LIES S 62° W, 20.70 FEET.

LOCATION AND COMMENTS

FROM INTERSECTION OF BUTTER CREEK WITH WEST BOUNDARY OF OF TOWNSHIP 1 NORTH, RANGE 29 EAST W.M. GO NORTH ± 0.2 MILES TO CORNER.

COMPASS DEC.

17° EAST

FIRM/AGENCY

PRIMM LAND SURVEYING  
1340 N.E. 4TH STREET  
P.O. BOX 1322  
HERMISTON, OREGON 97838

PARTY CHIEF

BRIT L. PRIMM

NOTES

WITNESS

CODY L. HANSEN

SURVEYOR'S SEAL

REGISTERED  
PROFESSIONAL  
LAND SURVEYOR

*Brit L. Primm*  
OREGON  
JULY 13, 1999  
BRIT L. PRIMM  
48509

EXPIRATION DATE: 31 JAN 08

07-260-C