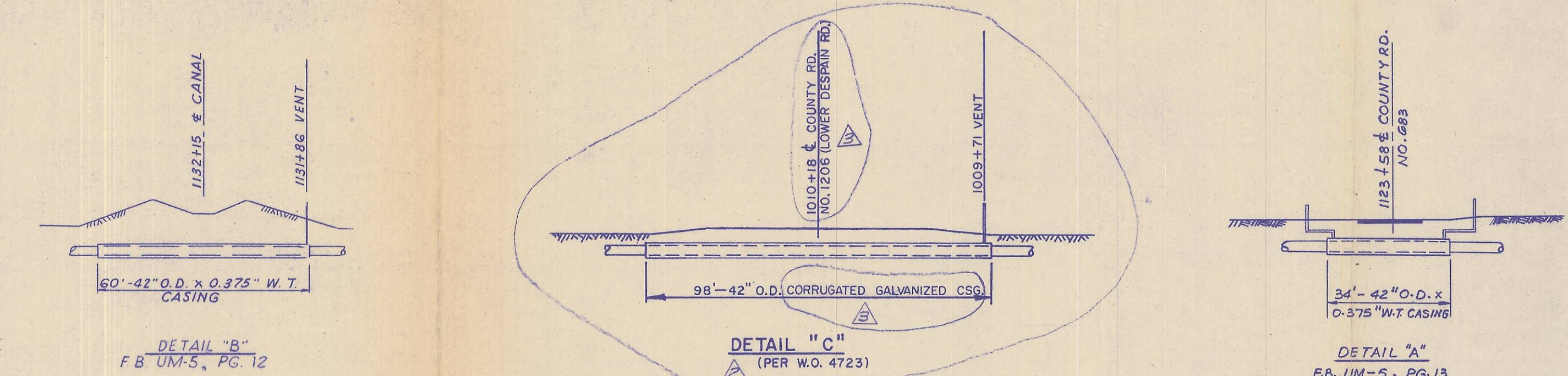
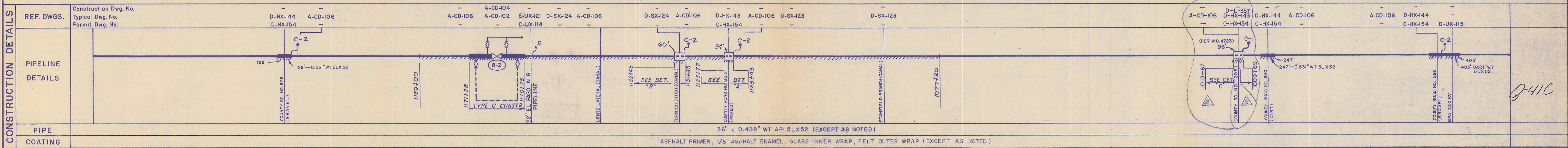
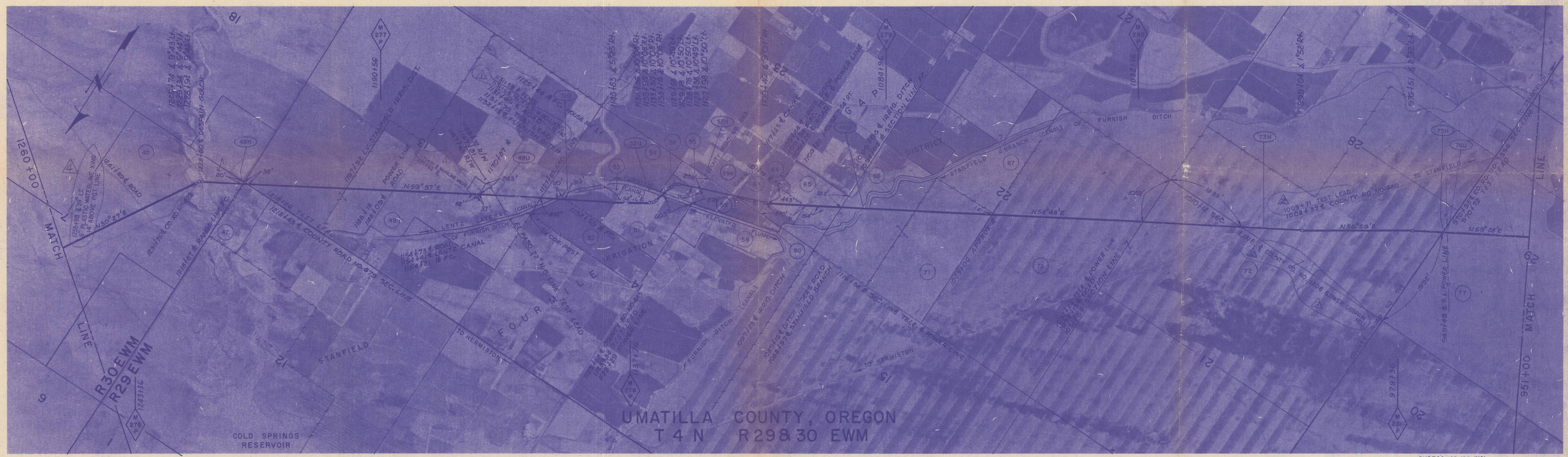


ALIGNMENT DETAILS	% IN PLANT	37.7%															21.3%		4FT.									
	% IN FIELD	MAXIMUM-1245 P.S.I.G. MINIMUM-1086 P.S.I.G.																										
R/W NO.	O-UM-40		O-UM-48H	O-UM-47	O-UM-49	PACIFIC GAS TRANS. COMPANY	O-UM-49U	O-UM-51U	O-UM-52	O-UM-51	O-UM-52U	O-UM-56	O-UM-55	O-UM-57A	O-UM-59	O-UM-63	O-UM-64	O-UM-65	O-UM-66	O-UM-66U	O-UM-71	O-UM-72	O-UM-73H	O-UM-72	O-UM-75H	O-UM-76U	O-UM-77	
OWNERSHIP	Pete Kosmos, et al		County Road No. 679	Raymond A. Meyersick	Edwards Farms Inc.		Pacific Northwest Pipeline Corp.	Lentz Canal Irr. Dist.	Norman D. Stewart et al	Victor W. Newman, et ux	Canal Irr. Dist.	David G. Payne et ux	E. W. & C. E. Spangler 0.43	County Road No. 683	Jerry Cooper	R. C. B. Buehler Schultz	Collin J. Cooper	Lester Sutton et al	Laura Rothoff	Thad R. Perry, et al	Stanfield Branch Irr. Dist.	Nathan D. Bard et ux	Nathan D. Bard, et ux	County Road No. 680	Nathan D. Bard, et al	County Road No. 596	Bonneville Power Adm.	Del T. Harmon
ACRES				0.18	14.57							1.41	1.61	0.03	1.63	1.75	1.77				5.95	21.16					14.29	
FIELDBOOK NO.							UM-3																					
PAGE NO.							3-15																					
R/W DETAILS	COND. PLAT O-UM-40 DWG. NO. C-RW-275						DWG. NO. D-MA-122																					
TERRAIN	PASTURE		ROAD	WHEAT			CULTIVATION	CANAL	PASTURE	CANAL	PAST.	ROAD	CORN	CLOVER														
SURFACE & VEGETATION																												



Hammon, Jensen & Wallen
REGISTERED PROFESSIONAL ENGINEERS
CALIFORNIA



MAINLINE BILL OF MATERIALS		STA. 951+00	TO STA. 1260+00
0.438" W.T. PIPE	30,065	FT.	4 EACH
0.531" W.T. PIPE	780	FT.	0 FT.
SINGLE CT. & DBLE. WRAP	18,940	FT.	94 FT.
DBLE. CT. & DBLE. WRAP	12,058	FT.	56 FT.
TEST LEADS, TYPE "E"	1	EACH	31 EACH
TEST LEADS, C-1	1	EACH	6 EACH
TYPE C CONSTRUCTION	55	FT. (SEE DWG. 46, SH. 2)	

TEST LEADS, C-2	4	EACH
CASING, 42" O.D. x 0.344" W.T.	94	FT.
CASING, 42" O.D. x 0.375" W.T.	56	FT.
VENT PIPE, 3" SCHED. 40	31	EACH
INSULATORS	6	EACH
END SEALS	6	EACH

NOTE: ALL BENDS ARE SMOOTH FIELD BENDS EXCEPT WHERE FACTORY BENDS ARE NOTED.

NO.	DATE	DESCRIPTION	APPRD.	APPROVED BY	GM
4	4-15-74	ADDED WATERLINE XING			GM
3	4-4-69	REVISED AS FLAGGED			BY DSGN.
2	2-28-69	REVISED PER W.O. 4723			DR. KAYE
1	3-19-68	ADDED STATIONING FOR VALVE A-2, PACIFIC N-W BELL XING & REV. AS FLAGGED			CH. F.E.M.
0	5-1-62	AS BUILT, REV. DWG. NUMBERS	ATT		O.K. ATT.
					DATE 5.29.59
					SCALES 1"=1000' APPROX.

36" PIPELINE
M.P. 275.7 to M.P. 281.5
UMATILLA COUNTY, OREGON

PACIFIC GAS TRANSMISSION COMPANY
SAN FRANCISCO, CALIF.

BECHTEL CORPORATION AGENT	SAN FRANCISCO CALIF.
BILL OF MATERIAL	
SHEET NO. 49 OF 106 SHEETS	
DRAWING NUMBER	CHANGE
B-AL-149	4

(349)
Q-41-C