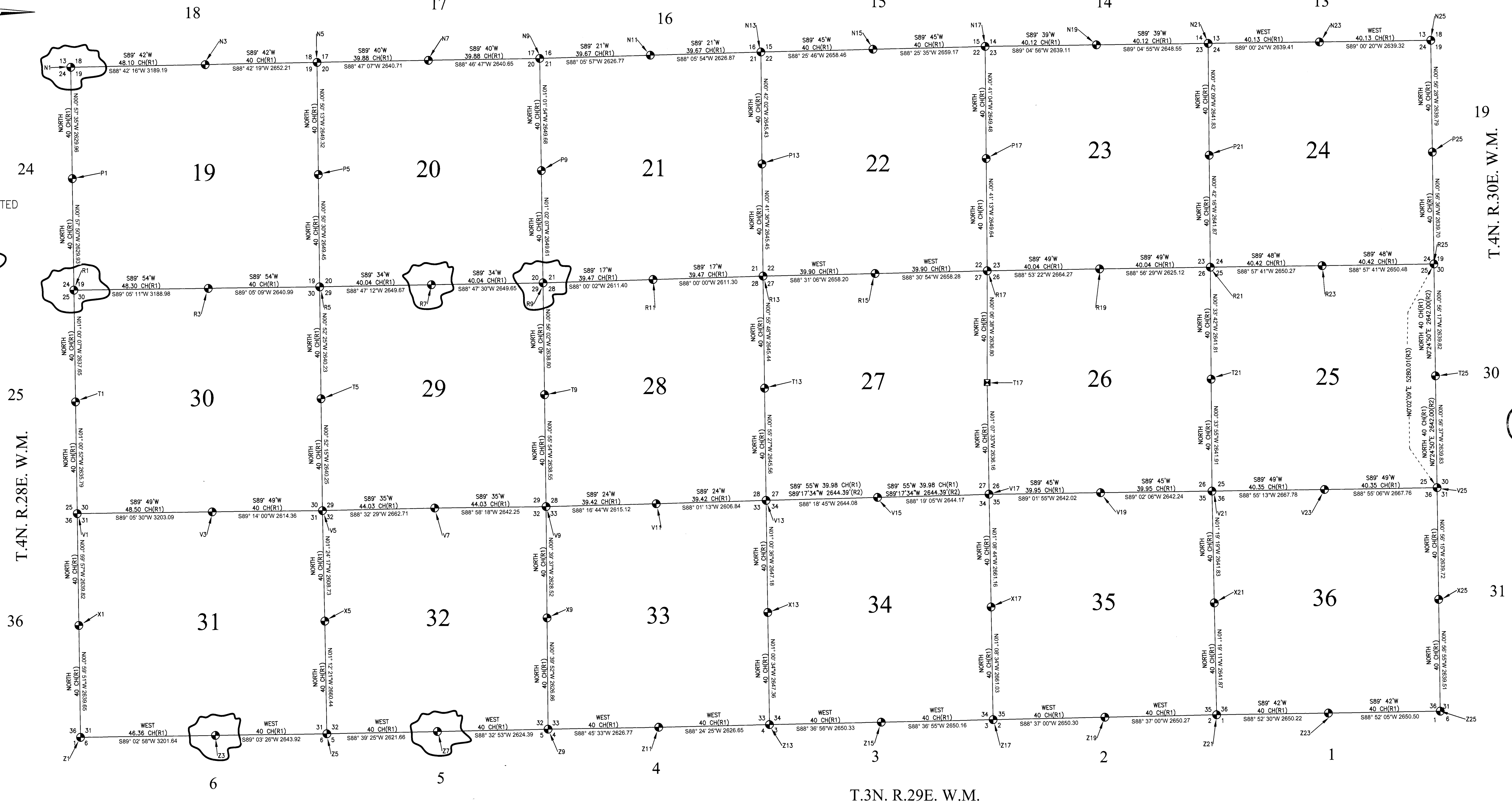
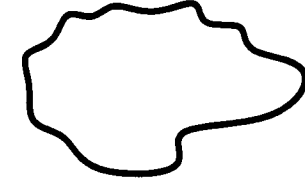


500' 0 500' 1000'
SCALE 1" = 500'
ALL DISTANCES SHOWN HERE ARE IN FEET UNLESS NOTED OTHERWISE

ALL DISTANCES SHOWN ON
HERE ARE GRID
INTERNATIONAL FEET

RECORD OF SURVEY
within the S1/2 OF
Township 4 N., Range 29 E., W.M.,
Umatilla County, Oregon

DUAL MONUMENTED
CORNERS



RECORD DATA AS SHOWN

- R1 GLO SURVEY AND NOTES OF TOWNSHIP 4 NORTH, RANGE 29 EAST, WILLAMETTE MERIDIAN, SURVEYED BY W.M. CAMPBELL, CONTRACT NO. 95, COMPLETED OCTOBER 17, 1860
- R2 RECORD OF SURVEY, 1996-2 UMATILLA COUNTY PUBLIC MONUMENTATION, BY EDWARDS SURVEYING, FILED UNDER COUNTY SURVEY No. 98-213-C.
- R3 RECORD OF SURVEY, FOR PRITCHARD, BY EDWARDS SURVEYING, FILED UNDER COUNTY SURVEY No. 07-230-B.

CORNER FORMS SHOWING TIES TO ALL
MONUMENTS FOUND, SET AND UPDATED ARE
MADE A PART OF THIS SURVEY. COUNTY
MONUMENT SIGNS WERE EXISTING OR PLACED IN
THE VICINITY OF EACH CORNER.

LEGEND

- SECTION LINE
- () DATA OF RECORD
- MONUMENT AS NOTED

RECEIVED BY
Umatilla County Surveyor
Date: 5/4/23
Rec'd By: CT
No.: 23-042-C

Reviewed By:	LCK
Drawn By:	RAC
Approved By:	LCK
Print Date:	MARCH 31, 2023
DWG. Scale:	AS SHOWN
Book & Page:	N/A

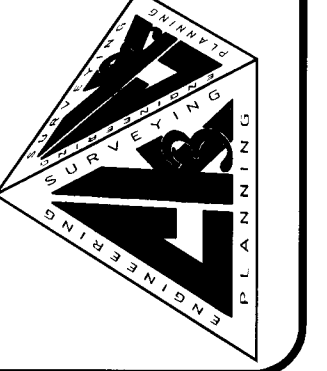
DATE	REVISION DESCRIPTION

REGISTERED
PROFESSIONAL
LAND SURVEYOR

James King
OREGON
MAY 10, 2011
LANCE CLARK KING
61420

RENEWS: 6/30/2023

CK3, LLC
ENGINEERING-SURVEYING & PLANNING
306 S.W. 28th Street
Hermiston, OR 97101
PH: (541) 889-5411 FAX: (541) 889-2074
WEB: ck3llc.net



RECORD OF SURVEY
FOR UMATILLA COUNTY SURVEYOR
TOWNSHIP 4 NORTH, RANGE 29 EAST
UMATILLA COUNTY, OREGON
UMATILLA COUNTY SURVEYOR
P.O. BOX 1126
PENDLETON, OREGON 97801

V1
SHEET NO. 1 OF 2
DWG NO. C-907
JOB NO. V021040

THIS DRAWING, AND ALL INFORMATION HEREIN, REMAIN THE PROPERTY OF CK3, L.L.C. ALL RIGHTS ARE EXPRESSLY RESERVED AND MAY NOT BE REPRODUCED IN WHOLE OR IN PART WITHOUT THE EXPRESSED WRITTEN CONSENT OF CK3, L.L.C.

DUAL MONUMENT TABLE FOUND / REPORTED OF RECORD			
DESCRIPTION	NORTHING	EASTING	NOTES
N-1 MONUMENT BRASS CAP PLS 933 SET 20-085-B	787622.25	8521135.32	SEE UMATILLA CIRCUIT COURT CASE NO. 20CV12568
N-1 DUAL MONUMENT BRASS CAP PLS 933 SET S-156-C	SEE CORNER FORM		STAMPED AS W.C. NOT HELD PER COUNTY SURVEYOR AND COURT RULING. OTHER PROPERTY RIGHTS MAY HAVE DEVELOPED.
R-1 MONUMENT BRASS CAP PLS 933 SET S-156-C	782363.10	8521223.62	HELD CORNER AS DIRECTED BY THE COUNTY SURVEYOR, I AGREE BASED ON THE CURRENT BLM MANUAL SECTION 6-45.
R-1 DUAL MONUMENT BRASS CAP FOUND INDICATION PER CS 95-060-B, I-021-C	SEE CORNER FORM		NOT HELD PER COUNTY SURVEYOR, NOT DUG UP AND EXPOSED AS DIRECTED BY COUNTY SURVEYOR. OTHER PROPERTY RIGHTS MAY HAVE DEVELOPED.
R-7 MONUMENT ALUMINUM CAP LS 951 SET 95-060-B	782512.19	8529701.92	HELD CORNER AS DIRECTED BY THE COUNTY SURVEYOR, I AGREE BASED ON THE CURRENT BLM MANUAL SECTION 6-45.
R-7 DUAL MONUMENT BRASS CAP ORIGIN UNKNOWN "1973" PER CF R7-95-060-B	SEE CORNER FORM		STAMPED AS W.C. NOT HELD PER COUNTY SURVEYOR. OTHER PROPERTY RIGHTS MAY HAVE DEVELOPED.
R-9 MONUMENT BRASS CAP LS 951 SET 95-060-B	782568.07	8532350.98	HELD CORNER AS DIRECTED BY THE COUNTY SURVEYOR, I AGREE BASED ON SURVEY NO. 19-004-B AND THE CURRENT BLM MANUAL SECTION 6-45.
R-9 DUAL MONUMENT BRASS CAP "1975" SET 03-272-C	SEE CORNER FORM		STAMPED AS W.C. NOT HELD PER COUNTY SURVEYOR. OTHER PROPERTY RIGHTS MAY HAVE DEVELOPED.
Z-3 MONUMENT BRASS CAP LS 951 SET 88-057-B & 88-089-B	771864.91	8524609.59	HELD CORNER AS DIRECTED BY THE COUNTY SURVEYOR, I AGREE BASED ON THE CURRENT BLM MANUAL SECTION 6-45.
Z-3 DUAL MONUMENT BRASS CAP PLS 933 SET S-158-C	SEE CORNER FORM		NOT HELD PER COUNTY SURVEYOR. OTHER PROPERTY RIGHTS MAY HAVE DEVELOPED.
Z-7 MONUMENT BRASS CAP PLS 852 SET 98-155-C	771969.87	8529874.09	HELD CORNER AS DIRECTED BY THE COUNTY SURVEYOR, I AGREE BASED ON ORS 209.070(5).
Z-7 DUAL MONUMENT BRASS CAP RLS 933 PER CS P-104-B	SEE CORNER FORM		STAMPED AS W.C. NOT HELD PER COUNTY SURVEYOR. OTHER PROPERTY RIGHTS MAY HAVE DEVELOPED.
Z-7 DUAL MONUMENT ALUMINUM CAP LS 951 SET 95-060-B	SEE CORNER FORM		STAMPED AS W.C. NOT HELD PER COUNTY SURVEYOR. OTHER PROPERTY RIGHTS MAY HAVE DEVELOPED.

SURVEYOR'S NARRATIVE & CERTIFICATE

THIS SURVEY WAS MADE AT THE REQUEST OF THE UMATILLA COUNTY SURVEYORS OFFICE, UNDER A CONTRACT EXECUTED BY THE UMATILLA COUNTY BOARD OF COMMISSIONERS DATED OCTOBER 11, 2021, FOR THE PURPOSE OF LOCATING ALL EXISTING PUBLIC LAND SURVEY CORNERS AND REMONUMENTING ANY FOUND TO BE MISSING, WITHIN THE SOUTH HALF OF TOWNSHIP 4 NORTH, RANGE 29 EAST, W.M.. THE REQUIREMENTS OF THIS SURVEY WERE TO PROVIDE SECOND ORDER NAD 83/91 STATE PLANE COORDINATES, A GENERAL OVERALL MAP AND NEW CORNER FORMS ON ALL CORNERS. THE BASIS OF BEARING FOR THIS SURVEY IS NAD 83/91 OREGON STATE PLAN COORDINATE, NORTH ZONE, INTERNATIONAL FEET, ALL DISTANCE SHOWN HERE ARE GRID. ALL CORNER MONUMENTS WERE TIED MULTIPLE TIMES FROM AN ADJUSTED 83/91 OPUS BASE/RTK AND FROM THE ORGN NETWORK/RTK ADJUSTED TO 83/91, A MEAN COORDINATE VALE IS REPORTED.

THE WEST LINE AND THE EAST LINE OF THIS TOWNSHIP WAS ORIGINALLY SURVEYED BY CAMPBELL IN 1860 UNDER CONTRACT NO. 95. THE SOUTH LINE OF THIS TOWNSHIP WAS ORIGINALLY SURVEYED BY GATES IN 1859 UNDER CONTRACT NO. 84. THE SUBDIVISION OF THIS TOWNSHIP WAS ORIGINALLY SURVEYED BY DAVENPORT IN 1861 UNDER CONTRACT NO. 101. CORNER MONUMENTS ESTABLISHED IN THESE SURVEYS WERE MOSTLY POST AND MOUNDS, NONE WERE RECOVERED

IN ADDITION TO PROVIDING STATE PLANE COORDINATES, THE COUNTY SURVEYOR REQUESTED THAT DUAL MONUMENTS BE IDENTIFIED. THIS TASK INVOLVED RESEARCH OF COUNTY RECORDS AND FIELD SEARCH FOR THESE DUAL MONUMENTS. THE MAP SHOWS THE DUAL MONUMENTS RECOVERED AND THEY ARE LISTED IN THE DUAL MONUMENT TABLE. THE DATA SHOWN ON THIS MAP RELATING TO THE DUAL MONUMENTS IS DRAFTED TO THE LOCATION APPROVED AND SELECTED BY THE COUNTY SURVEYOR. I AGREE WITH HIS MONUMENT SELECTION AS NOTED IN THE DUAL MONUMENT TABLE. THIS SURVEY IN NO WAY QUALIFIES ONE MONUMENT OVER ANOTHER IN RELATION TO PRIVATE PROPERTY RIGHTS THAT MAY HAVE DEVELOPED. THE PURPOSE OF THIS SURVEY IS TO REPORT LOCATIONS, PROVIDE STATE PLANE COORDINATES AND ASSIST THE COUNTY SURVEYOR WITH FINAL MONUMENT LOCATION SELECTIONS, AS PER CONTRACT REQUIREMENTS.

THE COUNTY SURVEYOR ALSO REQUESTED THAT ALL MONUMENTS WITH ILLEGIBLE STAMPINGS BE RE-STAMPED. THE MONUMENTS NEEDING RE-STAMPED WERE COMPLETED BASED ON VISABLE MARKINGS AND RECORD DATA, IF NOTHING WAS LEGIBLE IT WAS RE-STAMPED PER THE CURRENT BLM MANUAL AND WITH PLS 61420.

FOUR MONUMENTS WERE REESTABLISHED IN THIS SURVEY: V-15, V-17, V-25, & Z-25. ALL OF THESE MONUMENTS WERE REESTABLISHED BY EXISTING CORNER TIES, RECORD SURVEY DATA AND FIELD EVIDENCE AS NOTED IN THE RE-SET CORNER MONUMENT TABLE.

ILLANCE C. KING, A REGISTERED PROFESSIONAL LAND SURVEYOR HEREBY CERTIFY THAT NOTICE AND DOCUMENTS WERE PROVIDED TO THE COUNTY SURVEYOR THOUGHT THE COURSE OF THIS SURVEY OF ALL MONUMENTS SET AND CHANGES FOUND OR MADE TO ALL CORNER MONUMENTS, THAT THE ADJOINING PROPERTY AND ALL PROPERTY ACCESSED IN THIS SURVEY WAS DONE IN ACCORDANCE WITH ORS 672.047, THAT THE SURVEY WAS MADE BY ME OR UNDER MY DIRECTION, THAT THE MONUMENTS ARE SHOWN AND THAT THIS MAP IS A TRUE AND ACCURATE REPRESENTATION OF SAID SURVEY.

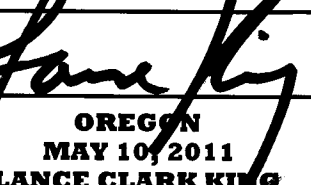
CORNER POINT TABLE					
DESCRIPTION	NORTHING	EASTING	DESCRIPTION	NORTHING	EASTING
N-3 BRASS CAP LS 951	787694.36	8524323.70	T-9 BRASS CAP LS 951	779929.61	8532393.99
N-5 BRASS CAP LS 951	787754.28	8526975.23	T-13 BRASS CAP LS 951	780105.22	8537613.45
N-7 BRASS CAP LS 951	787810.27	8529615.34	T-17 ALUMINUM CAP LS 951	780251.13	8542890.29
N-9 BRASS CAP LS 951	787866.50	8532255.40	T-21 BRASS CAP LS 951	780346.39	8548199.53
N-11 BRASS CAP LS 951	787953.64	8534880.72	T-25 BRASS CAP PLS 61420	780444.70	8553516.72
N-13 BRASS CAP LS 951	788040.80	8537506.15	V-1 BRASS CAP PLS 933	777090.47	8521316.40
N-15 BRASS CAP LS 951	788113.66	8540163.61	V-3 BRASS CAP RPE 7728	777141.24	8524519.10
N-17 BRASS CAP LS 951	788186.68	8542821.78	V-5 BRASS CAP ORIGIN UNKNOWN	777176.22	8527133.22
N-19 ALUMINUM CAP LS 951	788228.95	8545460.55	V-7 BRASS CAP PLS 933	777244.00	8529795.07
N-21 BRASS CAP LS 951	788271.38	8548108.76	V-9 ALUMINUM CAP PLS 61420	777291.41	8532436.89
N-23 BRASS CAP LS 951	788317.13	8550747.77	V-11 BRASS CAP PLS 933	777369.96	8535050.84
N-25 BRASS CAP LS 951	788362.94	8553386.70	V-13 BRASS CAP LS 951	777460.01	8537656.12
P-1 BRASS CAP PLS 933	784992.65	8521179.37	V-19 BRASS CAP LS 951	777660.11	8545583.73
P-5 BRASS CAP LS 951	785105.25	8527013.92	V-21 BRASS CAP LS 951	777704.61	8548225.59
P-9 BRASS CAP LS 951	785217.25	8532303.10	V-23 BRASS CAP LS 951	777754.88	8550892.90
P-13 BRASS CAP LS 951	785395.57	8537538.49	X-1 BRASS CAP PLS 933	774451.05	8521362.44
P-17 BRASS CAP LS 951	785537.38	8542853.43	X-5 BRASS CAP PLS 933	774568.27	8527197.17
P-21 BRASS CAP LS 951	785629.75	8548141.15	X-9 BRASS CAP PLS 933	774663.06	8532467.18
P-25 BRASS CAP LS 951	785723.51	8553430.05	X-13 BRASS CAP LS 951	774813.24	8537702.79
R-3 BRASS CAP PLS 933	782413.95	8524412.19	X-17 BRASS CAP LS 951	774954.85	8542995.30
R-5 BRASS CAP RPE 7728	782456.08	8527052.84	X-21 BRASS CAP LS 951	775063.49	8548286.54
R-11 ALUMINUM CAP LS 951	782659.18	8534960.79	X-25 BRASS CAP LS 951	775165.87	8553603.38
R-13 BRASS CAP LS 951	782750.31	8537570.50	Z-1 BRASS CAP STAEBLER	771811.80	8521408.40
R-15 BRASS CAP LS 951	782819.04	8540227.81	Z-5 BRASS CAP LS 951	771908.42	8527253.15
R-17 ALUMINUM CAP LS 951	782887.93	8542885.20	Z-9 BRASS CAP PLS 933	772036.37	8532497.64
R-19 ALUMINUM CAP LS 951	782939.57	8545548.96	Z-11 BRASS CAP LS 951	772093.26	8535123.79
R-21 ALUMINUM CAP LS 951	782988.07	8548173.63	Z-13 ALUMINUM CAP LS 951	772166.28	8537749.42
R-23 BRASS CAP LS 951	783036.12	8550823.46	Z-15 BRASS CAP LS 951	772230.31	8540398.98
R-25 5/8" I.R. W/RPC PLS 61420 SURFACE MONUMENT	783084.17	8553473.51	Z-17 BRASS CAP LS 951	772294.35	8543048.37
T-1 BRASS CAP PLS 933	779725.85	8521269.74	Z-19 BRASS CAP LS 951	772358.34	8545697.89
T-5 BRASS CAP PLS 61420	779816.16	8527093.09	Z-21 BRASS CAP LS 951	772422.32	8548347.38
			Z-23 BRASS CAP LS 951	772474.36	8550997.09

RE-SET CORNER MONUMENT TABLE			
DESCRIPTION	NORTHING	EASTING	DESCRIPTION / NOTE
V15	777537.87	8540299.06	SET 2 5/8" BRASS CAP "PLS 61420" ON 5/8"X30" I.R., IN AC WITH CONC. COLLAR NEAR CENTER OF COPPER RD. USING CORNER TIES FROM EXISTING ACCESSORIES, AND CHECKED THE LOCATION WITH RECORD DATA FROM COUNTY SURVEY No. 98-213-C
V17	777615.48	8542942.09	SET 2 5/8" BRASS CAP "PLS 61420" ON 5/8"X30" I.R. IN CONC. ON EDGE OF CANAL BANK. SET AT THE LOCATION OF A FOUND HOLE FROM PREVIOUS PK NAIL OF RECORD, VERIFIED WITH TIES TO EXISTING CORNER ACCESSORIES
V25	777805.23	8553560.19	FOUND 2 3/8" BRASS CAP ON I.P. "LS 951" DISTURBED AND OUT OF LOCATION FROM RECORD DATA COUNTY REMONUMENTATION SURVEY 98-213-C. CORNER RESET USING CORNERS R-25 AND V-21 AND FROM COUNTY SURVEY 07-230-B. VERIFIED THE LOCATION WITH EXISTING ACCESSORIES TIES. FOUND 60D NAIL APPROXIMATELY 1' BELOW GRADE WHILE RESET MONUMENT
Z25	772526.71	8553647.07	SET 2 3/8" BRASS CAP ON 15" I.P. WITH A 5/8" I.R. INSIDE OF PIPE "PLS 61420" USING RECORD COORDINATES AND VERIFIED EXISTING ACCESSORIES TIES. CORNER WAS FOUND ON FIRST OBSERVATION, BUT MISSING ON THE FOLLOWING OBSERVATION TRIPS, DUE TO PIPELINE EXCAVATION IN THE AREA

RECEIVED BY
 Umatilla County Surveyor
 Date: 5/4/23
 Rec'd By: CT
 No.: 23-042-C

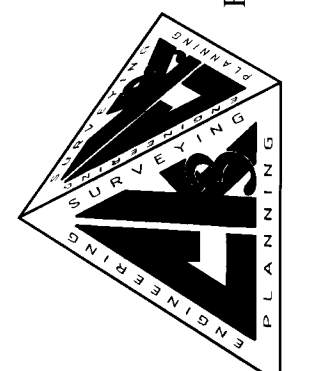
Reviewed By: LCK
 Drawn By: RAC
 Approved By: LCK
 Print Date: MARCH 31, 2023
 DWG. Scale: AS SHOWN
 Book & Page: N/A

RECORD OF SURVEY
 within the S1/2 OF
 Township 4 N., Range 29 E., W.M.,
 Umatilla County, Oregon

REGISTERED PROFESSIONAL LAND SURVEYOR

 OREGON
 MAY 10 2011
 LANCE CLARK KING
 61420

RENEWS: 6/30/2023

CK3, LLC
 ENGINEERING-SURVEYING & PLANNING
 368 S.W. 38th Avenue
 Ontario, OR 97944
 PH: (541) 869-5411 PH: (541) 567-2345
 FAX: (541) 869-2074 FAX: (541) 567-2305
 WEB: ck3llc.net



RECORD OF SURVEY
 FOR UMATILLA COUNTY SURVEYOR
 TOWNSHIP 4 NORTH, RANGE 29 EAST
 UMATILLA COUNTY, OREGON
 UMATILLA COUNTY SURVEYOR
 P.O. BOX 1126
 PENDLETON, OREGON 97801

V2
 SHEET NO. 2 OF 2
 DWG NO. C-907
 JOB NO. V021040

THIS DRAWING, AND ALL INFORMATION HEREIN, REMAINS THE PROPERTY OF CK3, LLC. ALL RIGHTS ARE EXPRESSLY RESERVED AND WILL NOT BE REPRODUCED IN WHOLE OR IN PART WITHOUT THE EXPRESSED WRITTEN CONSENT OF CK3, LLC.