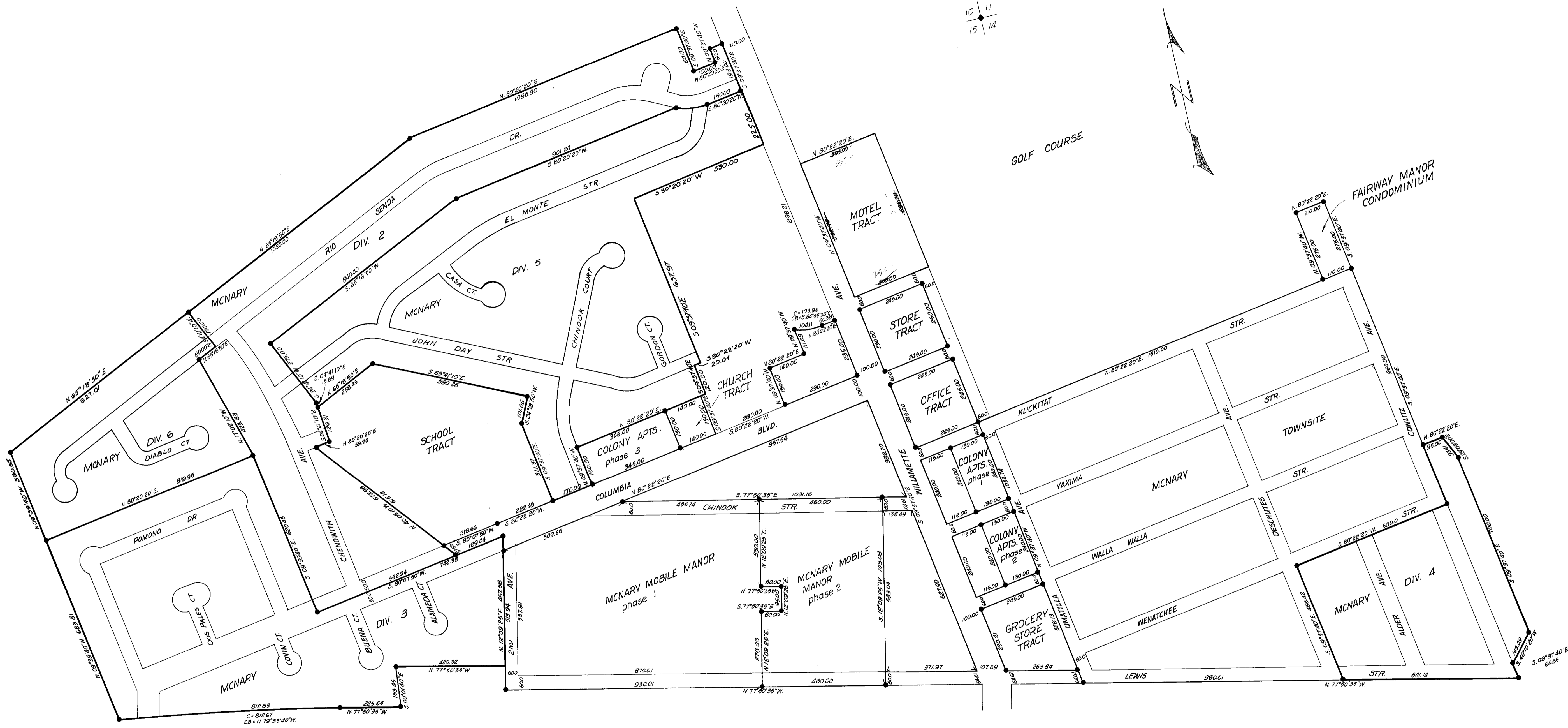
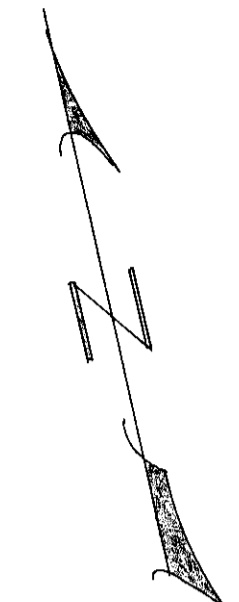


10
15
14



DAVID H. KELLY
REGISTERED
PROFESSIONAL
LAND SURVEYOR
OREGON
NO. 1234
DAVID H. KELLY
1975

03-226 C

PLAT OF MCNARY COMPLEX for: MCNARY MANAGENT CORP situated in: Sections 14 & 15, T 5 N, R 28 E, WM		WAYNE HARRIS CO. INC. ENGINEERS-SURVEYORS PENDLETON, ORE.			
Scale	1"=200'	DRNG BY	C.T.P.	DRNG NO	
Date	2-24-75	CKD BY	D.H.K.	75-444C	