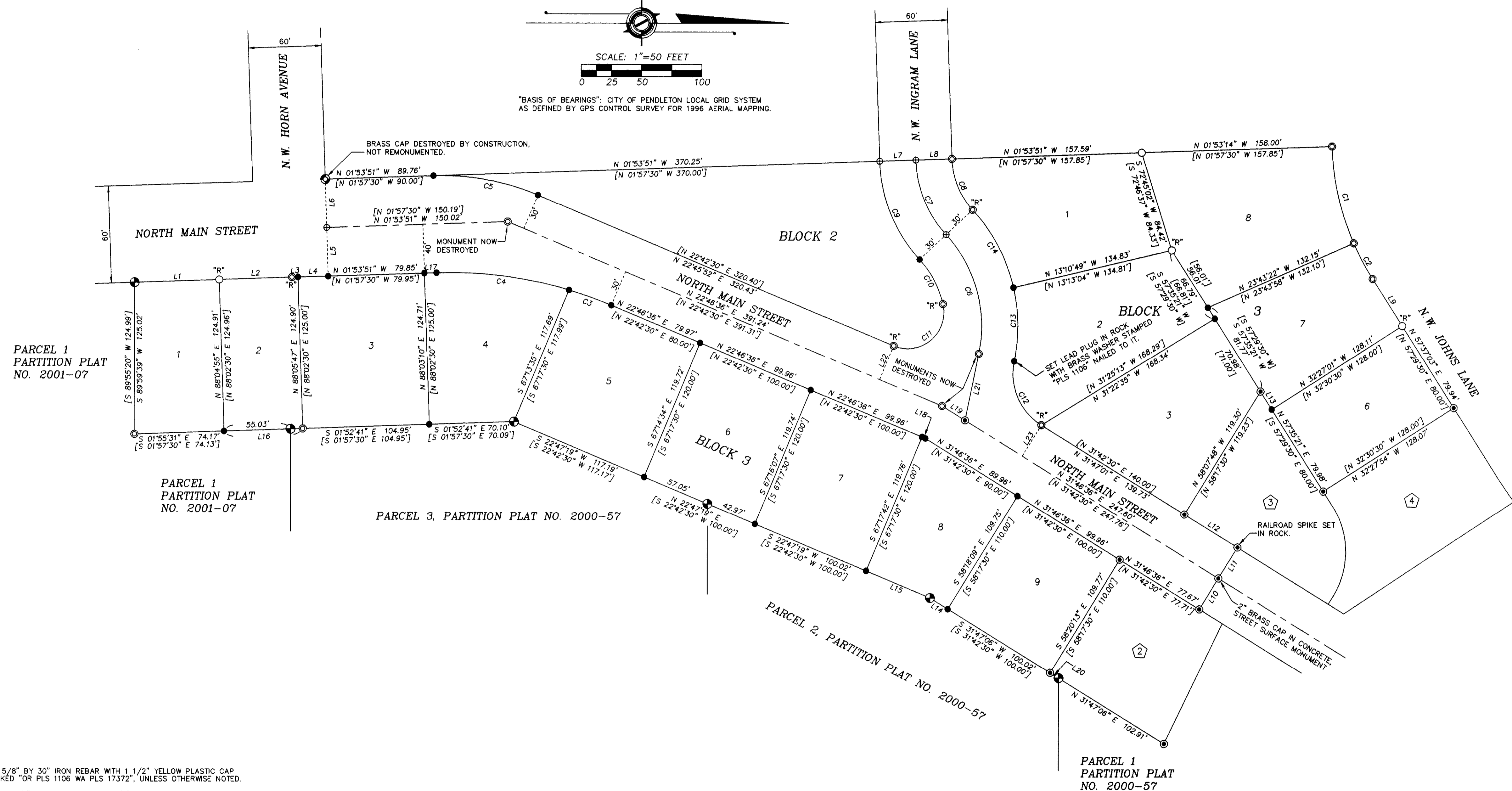
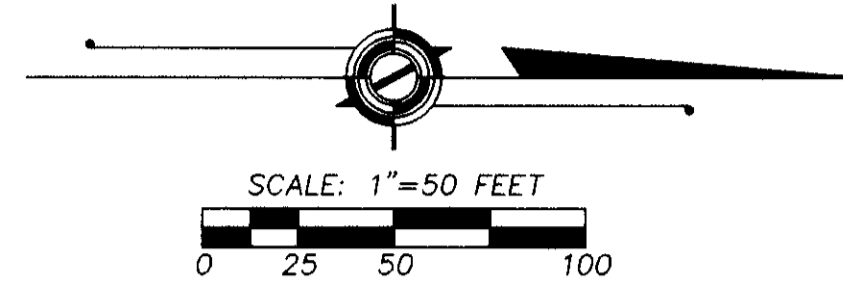


RECORD OF SURVEY

SEPTEMBER, 2001



LEGEND

- - SET 5/8" BY 30" IRON REBAR WITH 1 1/2" YELLOW PLASTIC CAP MARKED "OR PLS 1106 WA PLS 17372", UNLESS OTHERWISE NOTED.
- ⊙ - FOUND 5/8" IRON REBAR WITH 1 1/2" YELLOW PLASTIC CAP MARKED "OR PLS 1106 WA PLS 17372", SET IN "POST MONUMENTATION" OF NORTH MAIN ADDITION PLAT, UNLESS OTHERWISE NOTED.
- - FOUND 1/2" REBAR SET ON FIRST ADDITION TO STANGIER HILLS PLAT.
- ⊙ - INDICATES FOUND 1/2" REBAR SET ON FIRST ADDITION TO STANGIER HILLS PLAT. REMONUMENTED WITH 5/8" BY 30" REBAR WITH YELLOW PLASTIC CAP MARKED "OR PLS 1106 WA PLS 17372" ON THIS SURVEY.
- ⊙ - FOUND 5/8" REBAR SET ON FIRST ADDITION TO STANGIER HILLS PLAT.
- ⊙ - INDICATES FOUND 5/8" REBAR SET ON FIRST ADDITION TO STANGIER HILLS PLAT. REMONUMENTED WITH 5/8" BY 30" REBAR WITH YELLOW PLASTIC CAP MARKED "OR PLS 1106 WA PLS 17372" ON THIS SURVEY.
- ⊙ - FOUND 5/8" REBAR SET ON PARTITION PLAT NO. 1999-48, OR 2000-57, PRIOR TO REMOVAL BY CONSTRUCTION, REPLACED WITH 5/8" BY 30" IRON REBAR WITH 1 1/2" YELLOW PLASTIC CAP MARKED "OR PLS 1106 WA PLS 17372".
- ⊕ - CALCULATED POINT ONLY, NOT SET OR FOUND.
- [XOX] - RECORD DIMENSION, FIRST ADDITION TO STANGIER HILLS PLAT.
- ③ - INDICATES LOT NUMBER, NORTH MAIN ADDITION, A REPLAT, RECORDED AT BOOK 14, PAGE 16, RECORD OF TOWN PLATS.

LINE NO.	BEARING	DISTANCE	RECORD DIMENSION
L1	N 01°53'45" W	70.00'	[N 01°59'30" W 70.00']
L2	N 01°57'11" W	60.06'	[N 01°59'30" W 60.06']
L3	N 01°23'48" W	5.00'	[N 01°57'30" W 5.00']
L4	N 01°23'48" W	25.00'	[N 01°57'30" W 25.00']
L5	S 88°09'43" W	40.00'	[S 88°00'28" W 40.00']
L6	S 88°09'43" W	40.00'	[S 88°00'28" W 40.00']
L7	N 01°53'51" W	30.00'	[N 01°57'30" W 30.00']
L8	N 01°53'51" W	30.00'	[N 01°57'30" W 30.00']
L9	S 73°34'35" E	46.05'	[S 73°29'30" W 46.05']
L10	S 58°13'24" W	30.00'	[S 58°17'30" W 30.00']
L11	S 58°13'24" W	30.00'	[S 58°17'30" W 30.00']
L12	S 31°45'30" W	51.90'	[S 31°42'30" W 51.88']
L13	N 57°35'21" E	17.52'	[S 57°29'30" W 17.53']
L14	S 31°47'06" W	17.38'	[S 22°42'30" W 17.38']
L15	S 22°47'19" W	57.54'	[S 22°42'30" W 57.53']
L16	S 01°55'31" E	65.03'	[S 01°57'30" E 65.00']
L17	N 01°53'51" W	9.99'	[N 01°57'30" W 10.00']
L18	N 22°46'36" E	3.03'	[N 22°42'30" E 3.03']
L19	N 31°46'36" E	22.35'	[N 31°42'30" E 22.24']
L20	S 31°47'06" E	8.32'	[N 31°42'40" E 8.32']
L21	N 78°15'45" W	55.91'	[S 78°23'15" E 55.91']
L22	N 67°13'24" W	30.07'	[N 67°17'30" W 30.00']
L23	S 58°13'24" W	30.00'	[N 58°17'30" W 30.00']

CURVE TABLE

NO.	DELTA	RADIUS	LENGTH	LONG CHORD BEARING	LONG CHORD LENGTH
C1	21°44'56"	217.24'	82.46'	N 77°13'32" E 81.97'	[217.24' N 77°09'16" E 82.06']
C2	8°47'17"	217.24'	33.32'	N 61°57'26" E 33.29'	[217.24' N 61°52'46" E 33.24']
C3	6°11'22"	344.90'	37.26'	N 19°40'55" E 37.24'	[344.90' N 19°36'54" E 37.22']
C4	18°29'05"	344.90'	111.27'	N 07°20'42" E 110.79'	[344.90' N 07°16'54" E 110.76']
C5	24°40'27"	205.81'	88.63'	N 10°26'23" E 87.95'	[205.81' N 10°22'30" E 87.92']
C6	54°33'56"	111.13'	105.83'	S 74°27'13" W 101.88'	[111.13' N 74°19'43" E 101.88']
C7	41°00'57"	95.00'	68.01'	S 67°40'43" W 66.56'	[95.00' N 67°32'35" E 66.55']
C8	41°03'16"	65.00'	46.57'	N 67°41'53" E 45.58'	[65.00' N 67°32'35" E 45.52']
C9	40°59'44"	125.00'	89.44'	N 67°40'07" E 87.54'	[125.00' N 67°32'35" E 87.55']
C10	29°41'16"	81.13'	42.04'	N 62°00'53" E 41.57'	[81.13' N 61°54'48" E 41.64']
C11	126°02'09"	30.00'	65.99'	N 40°10'40" W 53.47'	[30.00' S 40°15'17" E 53.44']
C12	69°53'10"	50.00'	60.99'	S 66°43'11" W 57.28'	[50.00' N 66°39'37" E 57.29']
C13	24°49'50"	141.13'	61.16'	S 89°19'16" W 60.68'	[141.13' N 89°11'51" E 60.68']
C14	29°44'08"	141.13'	73.24'	N 62°02'18" E 72.42'	[141.13' N 61°54'48" E 72.43']

RECORD CURVE DATA

NO.	DELTA	RADIUS	LENGTH	LONG CHORD BEARING	LONG CHORD LENGTH
C1	21°44'56"	217.24'	82.46'	N 77°13'32" E 81.97'	[217.24' N 77°09'16" E 82.06']
C2	8°47'17"	217.24'	33.32'	N 61°57'26" E 33.29'	[217.24' N 61°52'46" E 33.24']
C3	6°11'22"	344.90'	37.26'	N 19°40'55" E 37.24'	[344.90' N 19°36'54" E 37.22']
C4	18°29'05"	344.90'	111.27'	N 07°20'42" E 110.79'	[344.90' N 07°16'54" E 110.76']
C5	24°40'27"	205.81'	88.63'	N 10°26'23" E 87.95'	[205.81' N 10°22'30" E 87.92']
C6	54°33'56"	111.13'	105.83'	S 74°27'13" W 101.88'	[111.13' N 74°19'43" E 101.88']
C7	41°00'57"	95.00'	68.01'	S 67°40'43" W 66.56'	[95.00' N 67°32'35" E 66.55']
C8	41°03'16"	65.00'	46.57'	N 67°41'53" E 45.58'	[65.00' N 67°32'35" E 45.52']
C9	40°59'44"	125.00'	89.44'	N 67°40'07" E 87.54'	[125.00' N 67°32'35" E 87.55']
C10	29°41'16"	81.13'	42.04'	N 62°00'53" E 41.57'	[81.13' N 61°54'48" E 41.64']
C11	126°02'09"	30.00'	65.99'	N 40°10'40" W 53.47'	[30.00' S 40°15'17" E 53.44']
C12	69°53'10"	50.00'	60.99'	S 66°43'11" W 57.28'	[50.00' N 66°39'37" E 57.29']
C13	24°49'50"	141.13'	61.16'	S 89°19'16" W 60.68'	[141.13' N 89°11'51" E 60.68']
C14	29°44'08"	141.13'	73.24'	N 62°02'18" E 72.42'	[141.13' N 61°54'48" E 72.43']

NARRATIVE

THE PURPOSE OF THIS SURVEY WAS TO REESTABLISH CERTAIN LOT CORNERS WITHIN THE PLAT OF FIRST ADDITION TO STANGIER HILLS, DESTROYED BY CONSTRUCTION OF IMPROVEMENTS TO NORTH MAIN STREET.

PRIOR TO BEGINNING CONSTRUCTION, REMAINING CORNERS WITHIN THE FIRST ADDITION WERE RECOVERED, MEASURED TO AND USED AS CONTROL FOR THE NORTH MAIN ADDITION REPLAT AND FOR STREET CONSTRUCTION. CERTAIN CORNERS ALONG THE EAST BOUNDARY OF FIRST ADDITION TO STANGIER HILLS, MONUMENTING PARCEL CORNERS IN PARTITION PLATS 1998-48 AND 2000-57 WERE DESTROYED DURING CONSTRUCTION AND ARE REPLACED ON THIS SURVEY.

THE SURVEY WAS MADE WITH A 2 PERSON CREW USING LEICA 399 GEODETIC GPS RECEIVERS OPERATED IN REAL TIME KINEMATIC MODE.

RECEIVED BY
 Umatilla County Surveyors
 DATE: 9-01
 BY: KR
 01-102-c

REGISTERED PROFESSIONAL LAND SURVEYOR
 WILLIAM R. WELLS
 OREGON
 JULY 22, 1977
 WILLIAM R. WELLS
 106
 RENEWS 6/30/02

WILLIAM R. WELLS, PLS
 357 N.E. HWY. 11
 P.O. BOX 1696
 PENDLETON, OR 97801
 PHONE: (541) 276-6362

DATE: 9/01 DR. BY: DMT
 CK. BY: WRW NO: 00-694

PROJECT:
 REMONUMENTATION OF CERTAIN CORNERS IN 1ST ADDITION TO STANGIER HILLS & PARTITION PLATS NO. 1998-48 & 2000-57

LOCATED IN THE SOUTHEAST QUARTER OF SECTION 3, T2N., R32E., W.M., CITY OF PENDLETON, UMATILLA COUNTY, OREGON.