

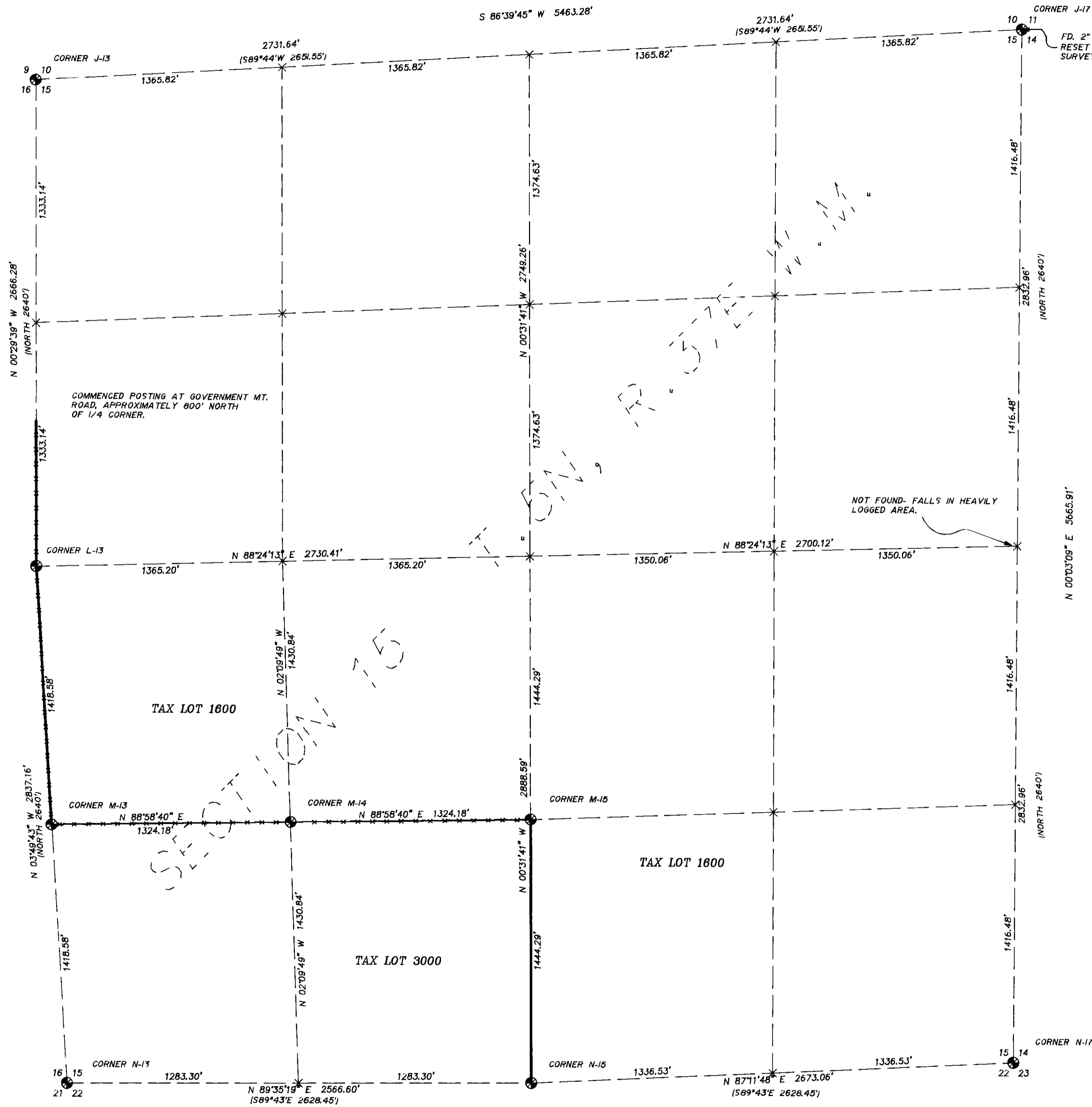
**BASIS OF BEARINGS**

BEARINGS SHOWN ARE BASED ON THE OREGON STATE COORDINATE SYSTEM, NORTH ZONE, NAD 83-91, FROM A GPS CONTROL TRAVERSE USING ASHTECH DUAL FREQUENCY RECEIVERS. NGS STATIONS "WALAIR N" AND "ATHENA" WERE HELD AS CONTROLLING FOR SAID TRAVERSE.

**LAND CORNER RECORDS**

**NARRATIVE**

THIS SURVEY WAS PERFORMED AT THE REQUEST OF MR. STEVE MARTIN FOR THE PURPOSE OF LOCATING DEED BOUNDARIES WITHIN SECTION 15, T.5N, R.37E. AS SHOWN HEREIN THE MAJORITY OF MR. ODELL'S ORIGINAL CORNERS WERE FOUND STILL IN PLACE. UNFORTUNATELY, EXTENSIVE DISTRACTIVE LOGGING IN THE AREA OF THE EAST 1/4 CORNER PREVENTED US FROM FINDING SAID CORNER. CONFLICTING TOPOGRAPHIC CALLS AND LACK OF DIMENSIONS ON THE ROCK ORIGINALLY SET LED ME TO CONCLUDE THAT THE NORTH 1/4 CORNER OF THE SECTION WAS NEVER SET. IT SHOULD BE NOTED THAT THE FENCE THAT RUNS SOUTHERLY FROM GOVERNMENT MOUNTAIN ROAD DEPARTS OFF LINE WESTERLY AS IT RUNS SOUTH, BEING 50 FEET WEST OF LINE AT GOVERNMENT MOUNTAIN RAK AND APPROXIMATELY 80 FEET WEST OF LINE WHERE IT TURNS EAST, AT A POINT 900 FEET SOUTH OF THE WEST 1/4 CORNER. THERE ARE ALSO FENCE LINES RUNNING EAST-WEST APPROXIMATELY 500 FEET SOUTH OF THE SECTION LINE. THIS SURVEY WAS PERFORMED AS A CLOSED FIELD TRAVERSE USING A NIKON AUTOMATIC TOTAL STATION WITH STANDARD ERRORS OF 3MM ± 2PPM AND 0"00'03", AND WAS ADJUSTED USING LEAST SQUARES. MONUMENTS SHOWN WERE VISITED FROM NOVEMBER, 1994 TO MARCH, 1995.



**CORNER CODE M-13**  
S. 1/16 CORNER OF SEC.'S 16 AND 15  
HISTORY: NONE  
EVIDENCE FOUND: NONE  
CORNER PERPETUATION: SET 5/8" X 30" REBAR WITH 2" ALUMINUM CAP. IN CENTER OF 24" DIA. STONE MOUND, WITH THE FOLLOWING BEARING TREES FOR ACCESSORIES: A FIR, 17" DIA., BEARS N 30°28' W, 71'1" DIST., SCRIBED 1/16 B.T.; AND A PINE, 20" DIA., BEARS N 33°02' E, 101.5' DIST., SCRIBED 1/16 B.T.; SET A STEEL FENCE POST WITH MONUMENT SIGN 1' NORTH OF ALUMINUM CAP.

**CORNER CODE M-14**  
S.W. 1/16 CORNER OF SECTION 15  
HISTORY: NONE  
EVIDENCE FOUND: NONE  
CORNER PERPETUATION: SET 5/8" X 30" REBAR WITH 2" ALUMINUM CAP. IN CENTER OF 40" X 24" X 20" STONE MOUND, WITH THE FOLLOWING BEARING TREE FOR ACCESSORY: A PINE, 26" DIA., BEARS N 89°46' W, 29.4' DIST., SCRIBED 1/16 B.T.; SET A STEEL FENCE POST WITH MONUMENT SIGN 2' NORTH OF ALUMINUM CAP.

**CORNER CODE M-15**  
CENTER SOUTH 1/16 CORNER OF SECTION 15  
HISTORY: NONE  
EVIDENCE FOUND: NONE  
CORNER PERPETUATION: SET 5/8" X 30" REBAR WITH 2" ALUMINUM CAP. WITH THE FOLLOWING BEARING OBJECT FOR ACCESSORY: A BOULDER 6' X 6' X 7', BEARS N 7°34' W, 397.1' DIST., CHISELED AN "X" 4" UP ON THE S.E. FACE. SET A STEEL FENCE POST WITH MONUMENT SIGN 1' WEST OF ALUMINUM CAP.

**CORNER CODE N-13**  
S.W. CORNER OF SECTION 15, CORNER COMMON TO SEC.'S 15, 16, 21 AND 22  
HISTORY: CORNER WAS ORIGINALLY ESTABLISHED, IN 1872, BY W. H. ODELL, AS A STONE 8" X 20" X 32", ON SIDE HILL THAT FACES S.E.  
EVIDENCE FOUND: AN 8" X 18" X 27" ROCK ON RIDGE (SIDE HILL), FACES S 10° E, WHAT APPEARS TO BE A "X" - 1" LONG CHISELED ON THE TOP.  
CORNER PERPETUATION: SET 5/8" X 30" REBAR WITH 2" ALUMINUM CAP. IN CENTER OF 24" X 18" STONE MOUND. SET A STEEL FENCE POST WITH MONUMENT SIGN 1' N.W. OF ALUMINUM CAP. ORIGINAL STONE WAS LEFT ALONGSIDE THE REBAR.

**CORNER CODE N-15**  
SOUTH 1/4 CORNER OF SECTION 15, AND NORTH 1/4 CORNER OF SECTION 22  
HISTORY: CORNER WAS ORIGINALLY ESTABLISHED, IN 1872, BY W. H. ODELL, AS A STONE 18" X 22" X 20".  
EVIDENCE FOUND: A SET STONE ON A STEEP S.W. SLOPE, 14" X 22" X 7" - BURIED.  
CORNER PERPETUATION: SET 5/8" X 30" REBAR WITH 2" ALUMINUM CAP. IN CENTER OF STONE MOUND WITH CORNER STONE, WITH THE FOLLOWING BEARING OBJECT FOR ACCESSORY: A ROCK OUTCROP, BEARS N 0°33' E, 89.9' DIST., PLACED A NAIL WITH BRASS WASHER STAMPED "WA-25893 OR-2360" IN ROCK, CHISELED AN "X". SET A STEEL FENCE POST WITH MONUMENT SIGN 2' NORTH OF CORNER.

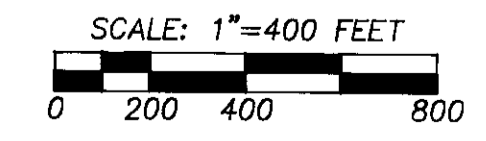
**CORNER CODE N-17**  
S.E. CORNER OF SECTION 15, CORNER COMMON TO SEC.'S 14, 15, 22 AND 23  
HISTORY: CORNER WAS ORIGINALLY ESTABLISHED, IN 1872, BY W. H. ODELL, AS A STONE 12" X 16" X 18".  
EVIDENCE FOUND: A STONE SET UPRIGHT, 12" X 15" X 7" - BURIED.  
CORNER PERPETUATION: SET 5/8" X 30" REBAR WITH 2" ALUMINUM CAP. IN CENTER OF STONE AND EARTH MOUND 30" X 30" X 20". SET A STEEL FENCE POST WITH MONUMENT SIGN 4' SOUTH WESTERLY OF CORNER.

**CORNER CODE J-13**  
N.W. CORNER OF SECTION 15, CORNER COMMON TO SEC.'S 9, 10, 15 AND 16  
HISTORY: CORNER WAS ORIGINALLY ESTABLISHED, IN 1872, BY W. H. ODELL, AS A STONE 14" X 17" X 24".  
EVIDENCE FOUND: TWO 8" X 14" X 23" ROCK HALVES. CORNER FALLS IN OLD N-S FENCE, EVIDENCE ALSO OF FENCE TO WEST. ROCK IS ON W. SIDE OF ROAD.  
CORNER PERPETUATION: SET ROCK HALVES BACK TOGETHER AND MOUNDED STONES AROUND. SET LARGE NAIL IN CRACK IN ROCK. ALSO SET STEEL FENCE POST N 30° W, 3.3' FROM CORNER.

**CORNER CODE L-13**  
1/4 CORNER COMMON TO SECTIONS 15 AND 14  
HISTORY: CORNER WAS ORIGINALLY ESTABLISHED, IN 1872, BY W. H. ODELL, AS A STONE 12" X 14" X 18".  
EVIDENCE FOUND: 12" X 14" X 18" PYRAMIDICAL STONE 1/3 OF WHICH WAS BELOW GROUND. STONE IS 20' ± SOUTH OF LINE OF OLD ROCK JACKS (NO SIGN OF FENCE OR WIRE) RUNNING EAST-WEST.  
CORNER PERPETUATION: SET 5/8" X 30" REBAR WITH 2" ALUMINUM CAP. LEFT ORIGINAL STONE ALONGSIDE RAISED 30" DIAMETER ROCK MOUND, AND SET FENCE POST AND SIGN 1 FT. EAST OF CORNER. SCRIBED A 20" PINE 1/4 BT 54°02'E 42.2' FROM CORNER AND A 10" FIR ON EAST SIDE OF ROAD 584°10'W 57.6' FROM CORNER.

**LEGEND**

- MARTIN PROPERTY BOUNDARY
- - - - - SECTION OR SECTION SUBDIVISION LINE
- \*\*\*\*\* SET STEEL FENCE POSTS ON 300' ± INTERVAL ALONG PROPERTY LINE
- x CALCULATED POINT, NOT FOUND OR SET
- ⊕ SET 5/8" X 30" REBAR WITH ALUMINUM CAP, STAMPED WITH APPROPRIATE CORNER DESIGNATION, ALSO STAMPED "TOMKINS SURVEYING - WA25893 OR2360" FOR CORNER MONUMENT, UNLESS DESCRIBED OTHERWISE. SEE LISTING ON THIS SHEET FOR COMPLETE DESCRIPTION.
- ( ) RECORD G.L.O. DIMENSION, BY ODELL, 1872.



REGISTERED PROFESSIONAL LAND SURVEYOR

PAUL W.P. TOMKINS  
OREGON  
JULY 26, 1988  
PAUL W.P. TOMKINS  
2380

RENEWS 6/30/96  
3/2/95

A SURVEY OF SECTION 15, TOWNSHIP 5 NORTH, RANGE 37 EAST OF THE WILLAMETTE MERIDIAN, LOCATED IN UMATILLA COUNTY, OREGON

SCALE  
HOR. 1" = 400'  
VERT.  
DATE  
11/94 - 3/95

PAUL W.P. TOMKINS, LAND SURVEYOR  
6 1/2 N. SECOND SUITE 303 WALLA WALLA, WA. 99362  
FOR: STEVE MARTIN 1830 GLASSOW BEND, OREGON

MARTIN/DWG

SHEET 1 OF 1