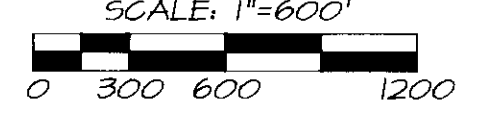


RECORD OF SURVEY

SECTION 10

SECTION 11

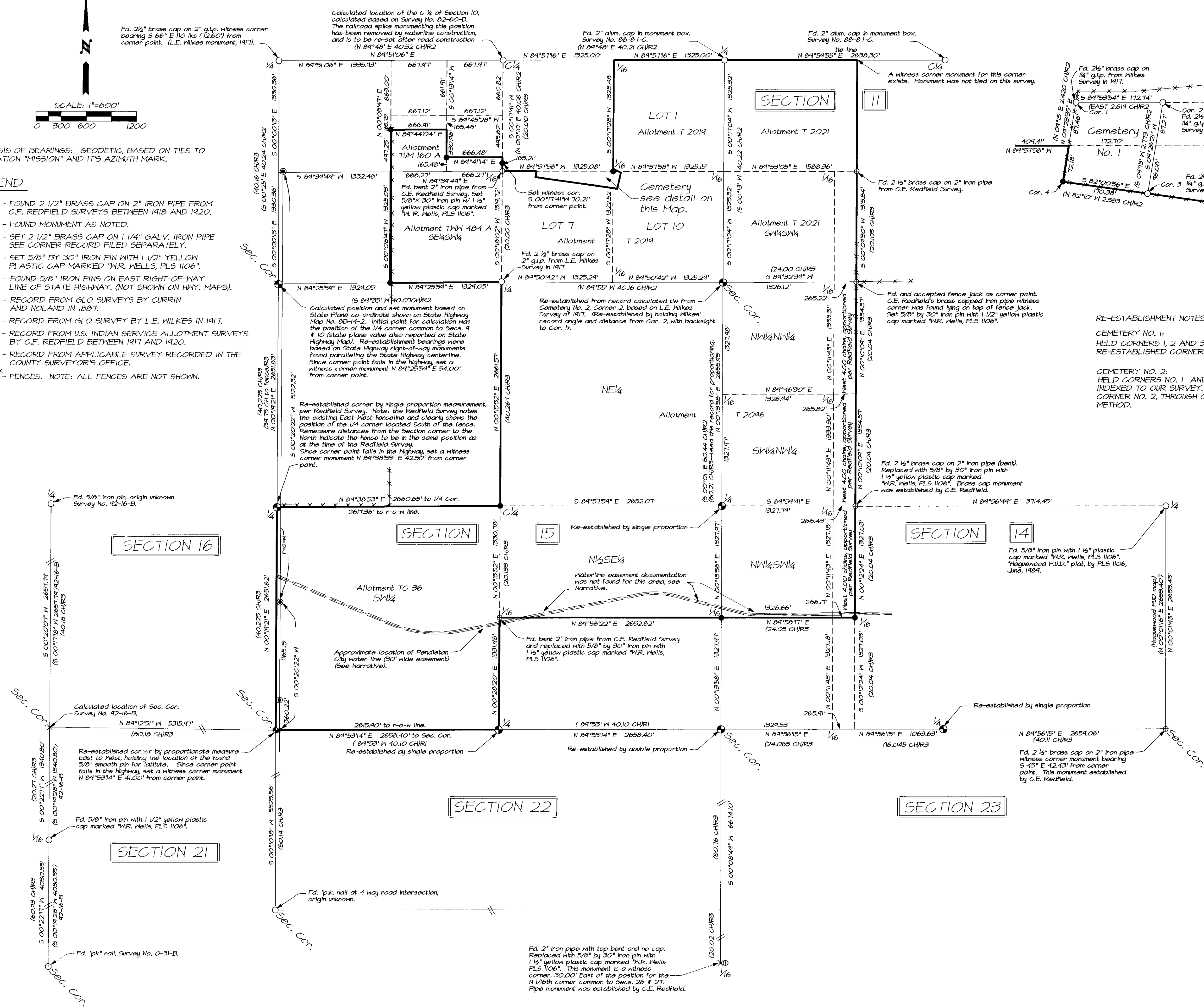
CEMETERY DETAIL
SCALE: 1" = 100'



BASIS OF BEARINGS: GEODETIC, BASED ON TIES TO STATION "MISSION" AND ITS AZIMUTH MARK.

LEGEND

- ⊕ - FOUND 2 1/2" BRASS CAP ON 2" IRON PIPE FROM C.E. REDFIELD SURVEYS BETWEEN 1918 AND 1920.
- - FOUND MONUMENT AS NOTED.
- ⊙ - SET 2 1/2" BRASS CAP ON 1 1/4" GALV. IRON PIPE SEE CORNER RECORD FILED SEPARATELY.
- - SET 5/8" BY 30" IRON PIN WITH 1 1/2" YELLOW PLASTIC CAP MARKED "W.R. WELLS, PLS 1106".
- ⊙ - FOUND 5/8" IRON PINS ON EAST RIGHT-OF-WAY LINE OF STATE HIGHWAY. (NOT SHOWN ON HWY. MAPS).
- (XOX)R1 - RECORD FROM GLO SURVEYS BY CURRIN AND NOLAND IN 1987.
- (XOX)R2 - RECORD FROM GLO SURVEY BY L.E. WILKES IN 1917.
- (XOX)R3 - RECORD FROM U.S. INDIAN SERVICE ALLOTMENT SURVEYS BY C.E. REDFIELD BETWEEN 1917 AND 1920.
- (XOX) - RECORD FROM APPLICABLE SURVEY RECORDED IN THE COUNTY SURVEYOR'S OFFICE.
- - FENCES. NOTE: ALL FENCES ARE NOT SHOWN.



RE-ESTABLISHMENT NOTES FOR CEMETERY CORNERS:

CEMETERY NO. 1:
HELD CORNERS 1, 2 AND 3 AS FOUND. USING WILKES' RECORD ANGLES AND DISTANCES, RE-ESTABLISHED CORNER 4 BY LEAST SQUARES METHOD.

CEMETERY NO. 2:
HELD CORNERS NO. 1 AND 2 AS FOUND. HELD WILKES' RECORD ANGLES TO RECOMPUTE BEARINGS INDEXED TO OUR SURVEY. ADJUSTED WILKES' INDEXED BEARINGS AND RECORD DISTANCES FROM CORNER NO. 2, THROUGH CORNERS NO. 3 AND NO. 4, AND BACK TO CORNER 1, BY LEAST SQUARES METHOD.

NARRATIVE OF SURVEY

THE PURPOSE OF THIS SURVEY, MADE AT THE REQUEST OF THE CONFEDERATED TRIBES OF THE UMATILLA INDIAN RESERVATION, WAS TO PARTIALLY SUBDIVIDE AND MONUMENT PORTIONS OF SECTIONS 10, 11, 14 AND 15, T2N, R33E, W.M. ALLOTMENTS TO 36, T 2049, T 2021, TUM 160 A AND THW 484 A ARE SHOWN ON THIS SURVEY PLAT.

A THOROUGH SEARCH WAS MADE FOR ALL CORNERS CONTROLLING THE SURVEY BOUNDARIES. EXTENSIVE FARMING AND ROAD BUILDING IN THE PROJECT AREA HAS OBLITERATED MANY OF THE CORNERS ESTABLISHED BY L.E. WILKES IN 1917 AND C.E. REDFIELD BETWEEN 1918 AND 1920. CORNERS RECOVERED, ACCEPTED AND RE-ESTABLISHED ARE SHOWN ON THIS PLAT.

IN 1917, L.E. WILKES, U.S. CADASTRAL SURVEYOR, SUBDIVIDED SECTION 10, AND MONUMENTED THE BOUNDARIES OF TWO CEMETERIES IN THE SE 1/4 OF THE SECTION. WILKES SUBDIVIDED SECTION 10 IN THE MANNER NOW PRESCRIBED IN THE BLM "MANUAL OF INSTRUCTIONS" AND DID NOT FOLLOW THE "THREE MILE RULE" NORMALLY USED FOR ALLOTMENT SURVEYS. MY SURVEY THEREFORE SUBDIVIDED THE S.E. AND S.W. QUARTERS OF SECTION 10, FOLLOWING THE DIRECTIONS OF THE 1917 BLM "MANUAL OF INSTRUCTIONS".

SECTIONS 14 AND 15 WERE ORIGINALLY SUBDIVIDED BY THE "THREE MILE RULE" BY CURRIN AND NOLAND IN 1987. C.E. REDFIELD, U.S. INDIAN SERVICE SURVEYOR, SUBDIVIDED SECTIONS 14 AND 15, USING MODIFIED FORMS OF THE "THREE MILE RULE" BETWEEN 1917 AND 1920. MY RETRACEMENT AND SUBDIVISION SURVEY FOLLOWS THE METHODS USED BY C.E. REDFIELD IN SUBDIVIDING SECTIONS 14 AND 15. PORTIONS OF REDFIELD'S FIELD NOTES WERE FOUND IN THE BIA REALTY SECTION VAULT AT THE UMATILLA AGENCY. REDFIELD'S RECORD FOR THE SURVEY OF THE SOUTH LINE OF SECTION 15 IS MISSING, OR THE LINE WAS NOT RUN BY REDFIELD. CURRIN AND NOLAND'S 1987 RECORD WAS THEREFORE USED TO CONTROL PROPORTIONING ALONG THE SOUTH LINE OF SECTION 15 ON THIS SURVEY.

THE PENDLETON CITY WATER SUPPLY LINE CROSSES PORTIONS OF THE SURVEY SITE. THIS LINE APPARENTLY CANNOT BE LOCATED WITHOUT DIGGING IT UP (NON-METALLIC). THE LOCATION SHOWN ON THIS PLAT IS APPROXIMATE, SHOWN FROM AS-BUILT DRAWINGS AND CIRCUIT COURT CONDEMNATION EXHIBITS. RECORD EASEMENT DOCUMENTATION HAS NOT BEEN FOUND FOR PORTIONS OF THE WATER SUPPLY LINE CROSSING THE N/2 SE 1/4 OF SECTION 15 AND THE NW 1/4 SW 1/4 OF SECTION 14.

METHODS OF RE-ESTABLISHING LOST CORNERS ARE INDICATED ON THIS PLAT DRAWING.

THIS SURVEY WAS MADE BY CLOSED LOOP CONTROL TRAVERSE WITH A LIETZ SET 3-B AUTOMATIC TOTAL STATION WITH STANDARD ERRORS OF 0°00'03" ANGULAR AND 3MM, PLUS OR MINUS 3 PARTS PER MILLION TIMES DISTANCE. FIELD DATA WAS COLLECTED USING A LIETZ SDR 22 ELECTRONIC FIELD BOOK.

REGISTERED PROFESSIONAL LAND SURVEYOR WELLS, R. WELLS OREGON JULY 22, 1977 WILLIAM R. WELLS 1106 EXPIRES 12/31/94	WILLIAM R. WELLS, PLS 357 N.E. HWY. 11 P.O. BOX 1696 PENDLETON, OR 97801 PHONE: (503) 276-6362	PROJECT: CONFEDERATED TRIBES OF THE UMATILLA INDIAN RESERVATION INTERPRETIVE CENTER BOUNDARY SECTIONS 10, 11, 14 & 15 T2N, R33E, W.M. UMATILLA COUNTY, OREGON
DATE: 3/5/93 CK. BY: WRW	DR. BY: WEG NO.: 42-194	