

VERTICAL DATUM  
 BASED ON BRASS CAPPED IRON PIPE BUREAU  
 OF RECLAMATION MONUMENT AT 3 RD AND  
 HURLBERT, ELEVATION = 451.0.

LEGEND

- DT - PHONE PEDESTAL.
- - LOCUST TREE UNLESS OTHERWISE INDICATED, SIZE NOTED.
- <sub>D</sub> - STORM DRAIN MANHOLE.
- <sub>S</sub> - SANITARY SEWER MANHOLE.
- X—X— - EXISTING FENCE.
- P— - MAILBOX.
- - SMALL BUSH.
- - TRAFFIC LIGHT.
- <sub>G</sub> - GAS METER.
- <sub>W</sub> - WATER METER.
- <sub>W</sub> - WATER VALVE.
- ⊠ - STUMP.
- d/w - DRIVEWAY DROP.
- - SET 5/8" BY 30" IRON PIN WITH 1 1/2" PLASTIC OR ALUMINUM CAP MARKED "PLS 1106".
- - FOUND MONUMENT AS NOTED.
- ⊕ - SET LEAD PLUG IN CONCRETE SIDEWALK WITH BRASS WASHER STAMPED "PLS 1106".
- (XOX) - DIMENSIONS OF RECORD.

NARRATIVE OF SURVEY

THIS SURVEY WAS PERFORMED AT THE REQUEST OF LES SCHWAB TIRE CENTERS. THE PURPOSE OF THE SURVEY WAS TO TOPOGRAPHICALLY MAP AND DETERMINE BOUNDARIES FOR EXISTING TIRE CENTER AND THREE PARCELS EAST OF THE EXISTING TIRE CENTER WHICH WILL BE ACQUIRED FOR EXPANSION.

BOUNDARY DETERMINATION:  
 BOUNDARIES WERE DETERMINED BY APPLYING EXISTING PARCEL DEED DESCRIPTIONS TO EXISTING MONUMENTS FOUND ON THE GROUND. AN EXTENSIVE CORNER SEARCH AND SURVEY WAS MADE OF THE BLOCK BOUNDED BY U.S. HIGHWAY NO. 395, N.E. MC NARY STREET, EAST BEEBE AVENUE AND EAST JENNIE AVENUE. EXISTING MONUMENTS WERE ALSO LOCATED ON THE NORTH LINE OF THE LOBAUGH AND STORER PLAT (ON THE SOUTH LINE OF EAST JENNIE AVENUE). TIES WERE MADE TO THE N.W. CORNER AND WEST 1/4 CORNER OF SECTION II AND N.W. 1/6TH CORNER OF SECTION II. WITH THE EXCEPTION OF MONUMENTS SHOWN ON SURVEY MAP NO. 5-A-14-AX AND M-40, ALL MONUMENTS FOUND WERE ACCEPTED AND USED FOR BOUNDARY DETERMINATION.

DESCRIPTIONS IN THE PROJECT AREA ARE BASED ON A POINT OF BEGINNING AT THE S.W. CORNER OF THE N.W. 1/4 OF THE N.W. 1/4 OF SECTION II. SURVEY NO. 5-A-14-AX AND M-40 LOCATE THE S.W. CORNER OF THE N.W. 1/4 OF SECTION II BY SINGLE PROPORTION MEASUREMENT BETWEEN MONUMENTS AT THE N.W. CORNER AND WEST 1/4 CORNER OF SECTION II. TRACT CORNER MONUMENTS FOUND DURING THIS SURVEY INDICATE THIS PROPORTIONED LOCATION OF THE S.W. CORNER OF THE N.W. 1/4 OF SECTION II TO BE OUT OF POSITION BY OVER 4 FEET IN THE NORTH-SOUTH DIRECTION AND OVER 0.6 FOOT IN THE EAST-WEST DIRECTION. MONUMENTS SET ON SURVEY NO. 5-A-14-AX AND M-40, FROM THE PROPORTIONED POSITION OF THE S.W. CORNER OF THE N.W. 1/4 OF SECTION II GREAT GAAPS WHEN APPLIED TO EXISTING MONUMENTATION FOUND ON THE SURROUNDING TRACTS. EXISTING MONUMENTS FROM SURVEY NO. 5-A-14-AX AND M-40 ARE SHOWN, BUT WERE NOT USED FOR BOUNDARY DETERMINATION.

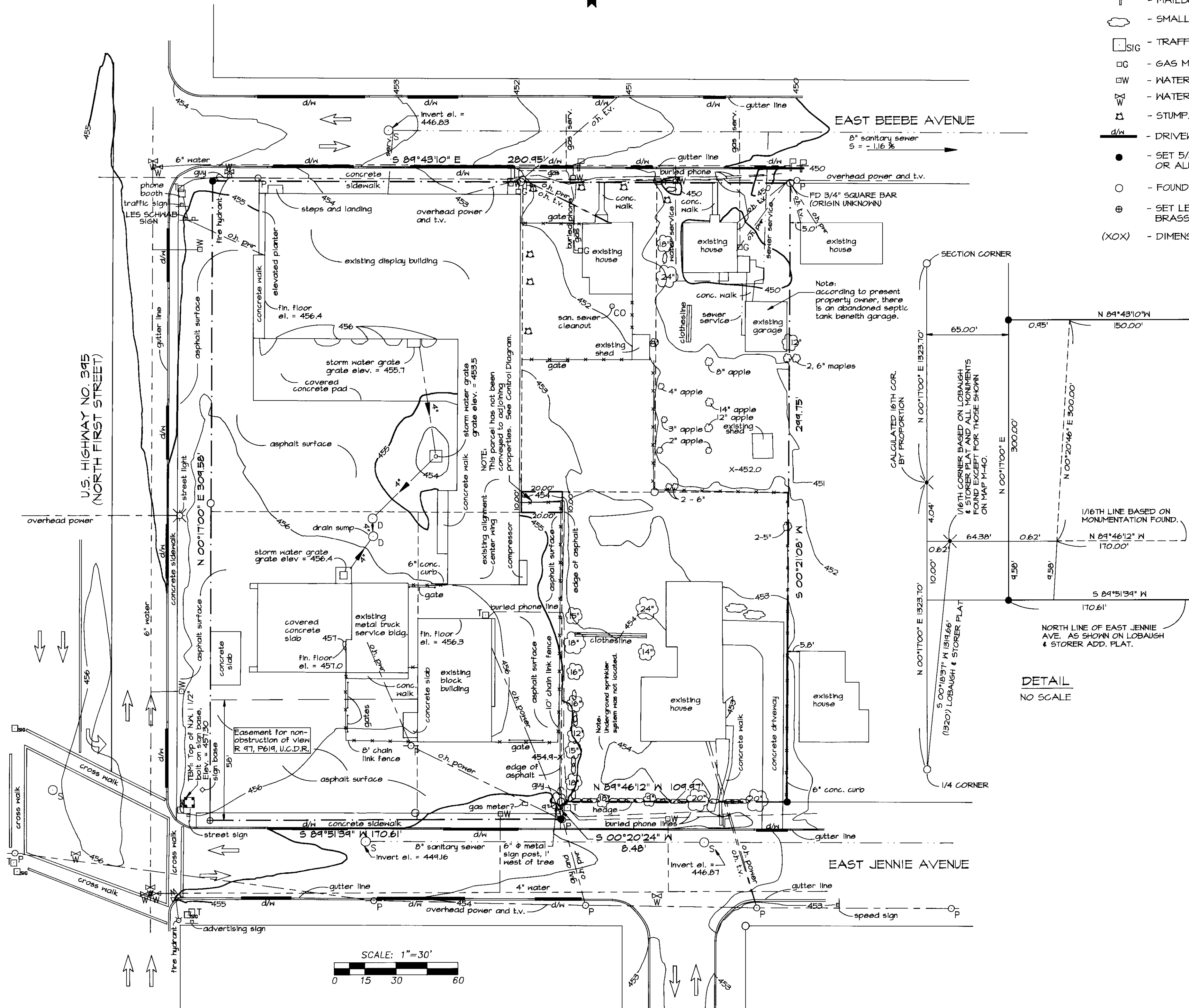
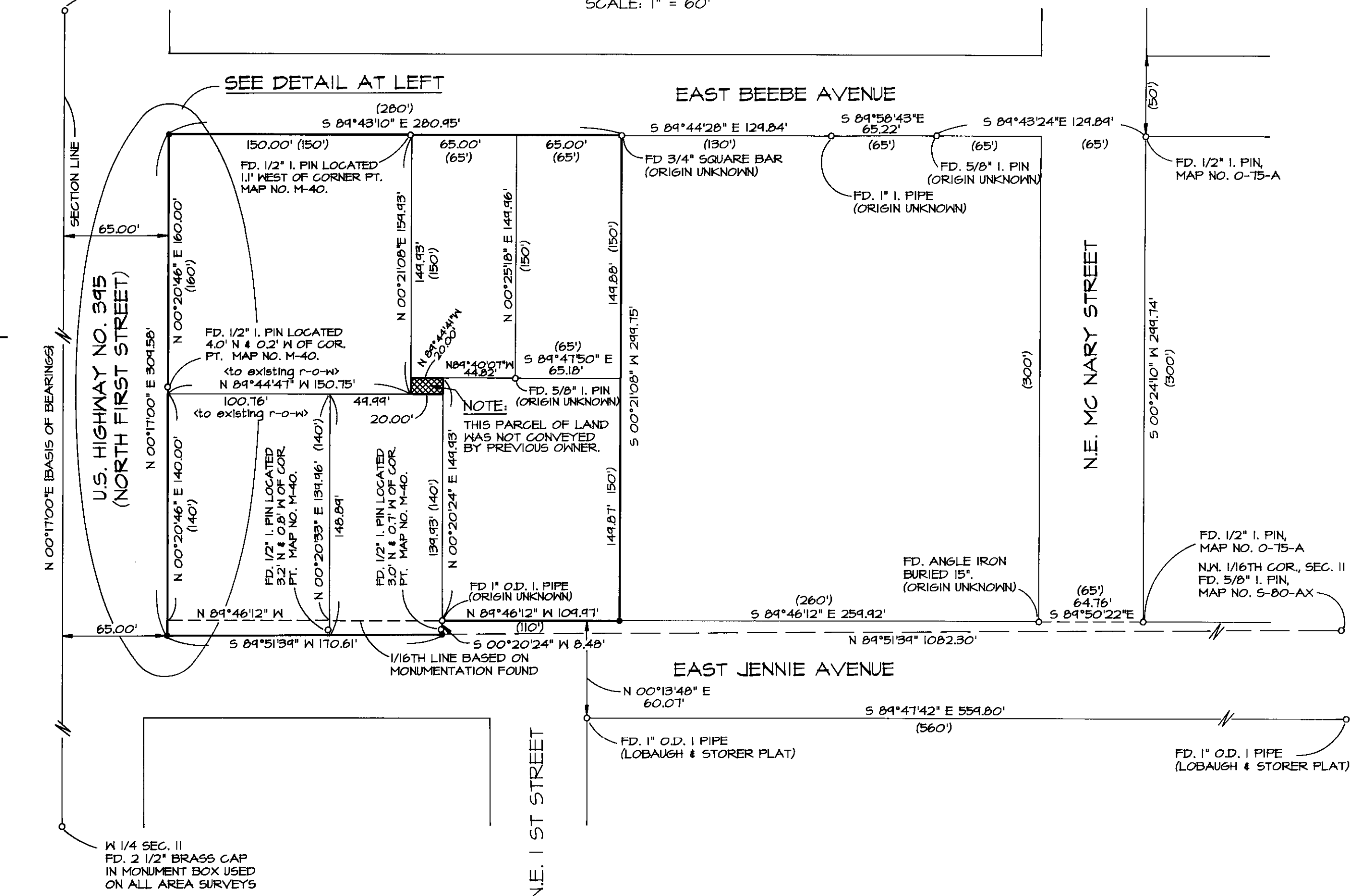
THE LOCATION OF THE S.W. CORNER OF THE N.W. 1/4 OF THE N.W. 1/4 CONTROLLING DESCRIPTIONS IN THIS AREA WAS CALCULATED BASED ON FOUND EXISTING MONUMENTATION AS NOTED ON THIS MAP. THIS LOCATION FOR THE S.W. CORNER OF THE N.W. 1/4 OF SECTION II ALSO MATCHES MONUMENTS FOUND FOR LOBAUGH AND STORER'S ADDITION ALONG THE SOUTH LINE OF EAST JENNIE AVENUE. THE EAST LINE OF U.S. HIGHWAY NO. 395 WAS SET PARALLEL TO AND 65.00 FEET EAST OF THE EXISTING SECTION LINE, AS DEFINED BY EXISTING MONUMENTS AT THE N.W. CORNER AND WEST 1/4 CORNER OF THE SECTION.

THE 10 FOOT BY 20 FOOT RECTANGULAR PARCEL OF LAND NOTED ON THIS MAP WAS NEVER CONVEYED TO ADJOINING PROPERTIES BY THE PREVIOUS LANDOWNER.

THIS SURVEY WAS MADE WITH A 2 PERSON CREW USING A LIETZ SET 3B TOTAL STATION AND SDR 22 ELECTRONIC FIELD BOOK. BASIS OF BEARINGS IS THE LINE BETWEEN EXISTING MONUMENTS AT THE N.W. CORNER AND WEST 1/4 CORNER OF SECTION II, AS SHOWN ON THIS MAP.

SURVEY CONTROL DIAGRAM

SCALE: 1" = 60'



BURIED UTILITY NOTES

1. UNDERGROUND UTILITIES ARE SHOWN FROM LINE LOCATES BY INDIVIDUAL UTILITY COMPANIES.
2. THE UNDERGROUND SPRINKLER SYSTEM AT THE FLORENCE STEWART HOUSE ABUTTING EAST JENNIE AVENUE WAS NOT LOCATED.

REFERENCE SURVEYS

PLAT OF LOBAUGH AND STORER ADDITION, MAP NO. A-14-AX, M-40, S-86-AX, O-75-A, J-21-AX, R-131-AX, 88-22-B, 84-105-AX, 85-162-A, O-42-A.

DEED REFERENCES

R 88 P 1440, B 331 P 625, R 151 P 148, R132 P 1124, B 243 P 43, R 41 P 614, R 41 P 788.

REGISTERED PROFESSIONAL LAND SURVEYOR <i>William R. Wells</i> OREGON JULY 22, 1977 WILLIAM R. WELLS 1108	WILLIAM R. WELLS, PLS 357 N.E. HWY. 11 P.O. BOX 1696 PENDLETON, OR 97801 PHONE: (503) 276-6362	PROJECT: SURVEY FOR LES SCHWAB TIRE CENTERS
	DATE: 11/2/92 CK. BY: WFW	DR. BY: WEQ NO: 92-150

RECORDED BY  
 Umatilla County Survey  
 Date: 3-27-93  
 Rec'd by: RFW  
 No: 93-1100

WILLOU/SHERM