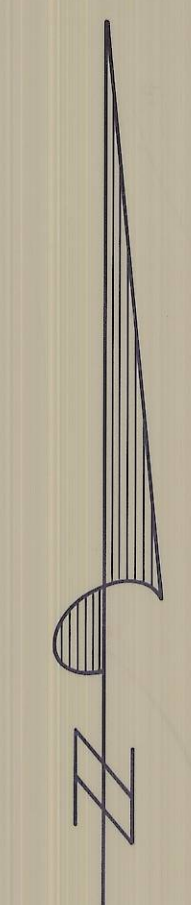
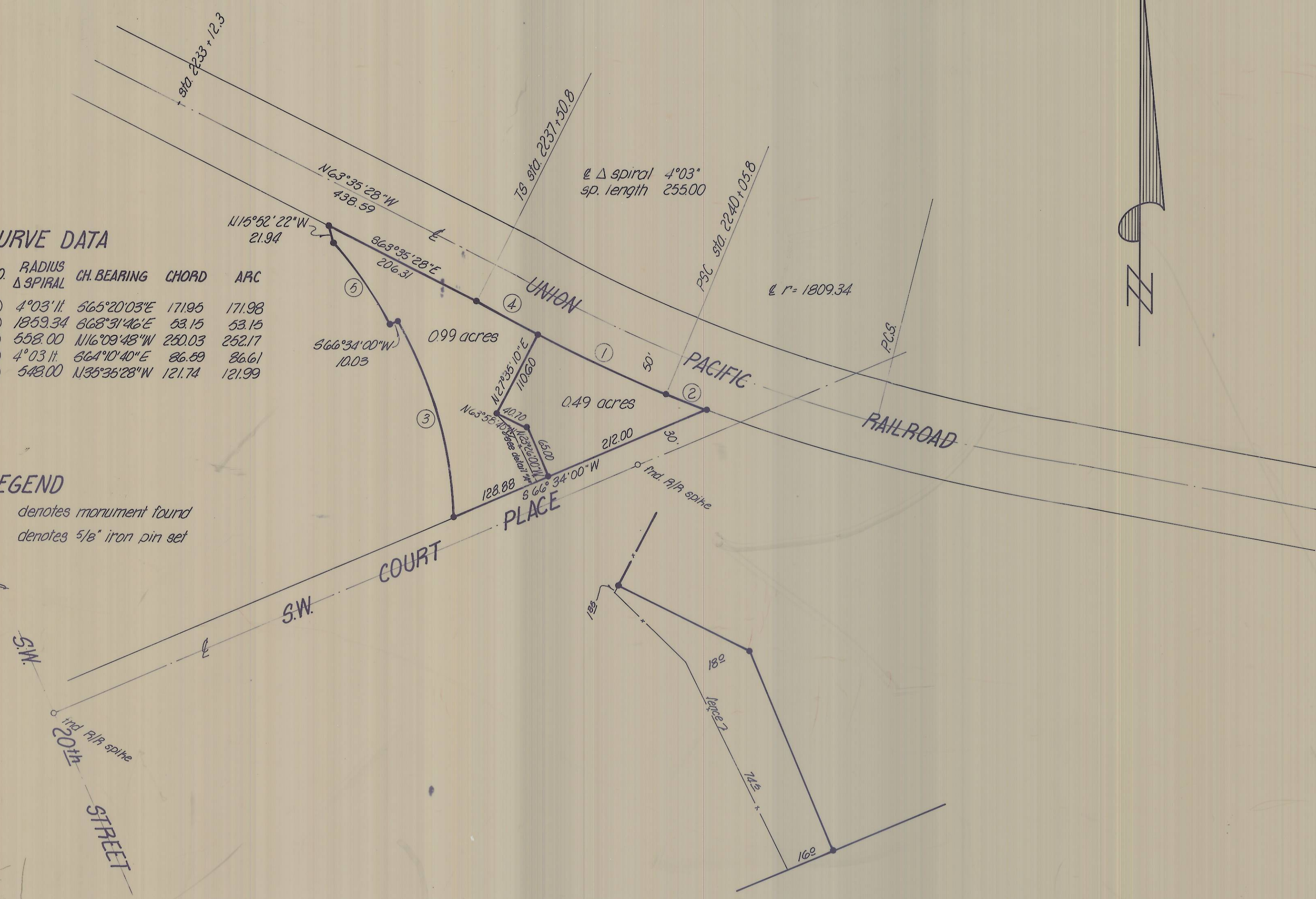


**CURVE DATA**

NO.	RADIUS Δ SPIRAL	CH. BEARING	CHORD	ARC
①	4°03'11"	S65°20'03"E	171.95	171.98
②	1859.34	S68°31'46"E	53.15	53.15
③	558.00	N16°09'48"W	250.03	252.17
④	4°03'11"	S64°10'40"E	86.89	86.61
⑤	548.00	N35°35'28"W	121.74	121.99

**LEGEND**

- denotes monument found
- denotes 5/8" iron pin set



RECEIVED BY  
 Umatilla County Surveyor  
 Date 7-81  
 Rec'd By BLD  
 No. S-100-B

Revised July 13, 1981-MA  
 Revised August 6, 1980-MA

REGISTERED  
 PROFESSIONAL  
 LAND SURVEYOR  
 David H. Krumbein  
 OREGON  
 JULY 17, 1970  
 DAVID H. KRUMBEIN  
 933

SCALE  
 1" = 100'  
 DATE  
 July 13, 1979  
 DRN. BY  
 MA  
 CKD. BY  
 D.H.K.  
 DRNG. NO.  
 79-48C

KRUMBEIN ENGINEERING CO.  
 ENGINEERS - SURVEYORS - PLANNERS  
 221 S. Main, Pendleton, Oregon

Survey for  
**JONES**

SW 1/4 of NW 1/4, Section 10, T2N, R32E, W.M., Pendleton