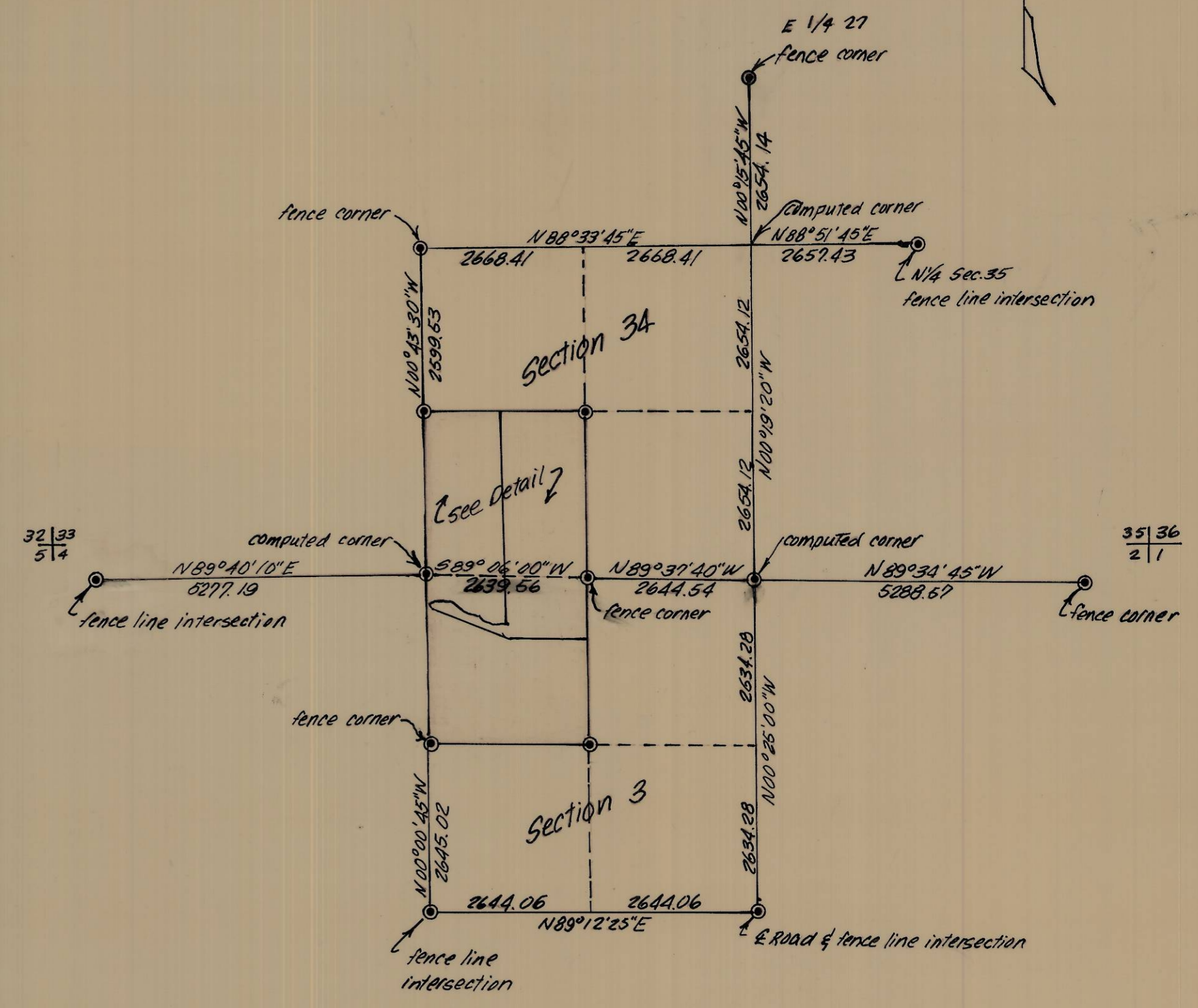


℄ of draw

1	N 75° 01' 00" E	78.88
2	S 86° 22' 40" E	109.30
3	S 76° 40' 55" E	76.71
4	S 70° 34' 55" E	76.32
5	S 57° 43' 20" E	184.96
6	S 65° 19' 10" E	144.57
7	S 79° 05' 30" E	42.63
8	S 66° 53' 50" E	197.56
9	S 80° 44' 00" E	44.43
10	S 53° 31' 40" E	70.88
11	S 87° 59' 45" E	170.69

- LEGEND:
- - Set 5/8 in. iron pin
 - ⊙ - Set brass cap



NOTE:

All bearings shown are grid bearing base N.M.S. station "Laurila." Distances shown are true. The difference between total and tillable acres is in scab patches and roads. No well defined monuments were found in the area. The road intersections, fence lines and plowlines noted were verified for one mile past the points shown for continuity. All points used have been long accepted by property owners as being the corners.



M-108-B

KRUMBEIN ENGINEERING CO.	
ENGINEERS - SURVEYORS - PLANNERS 216 S.E. 1st, Pendleton, Oregon	
Survey for Timmermann's S.W. 1/4 Section 34, T4N, R31E WM N.W. 1/4 Section 3, T3N, R31E WM	
SCALE	AS SHOWN
DATE	Nov. 8, 1976
DRN BY	PLP
CKD BY	DLK
DRNG NO	76-527