

# TOWNSHIP 6 SOUTH, RANGE 33 EAST, OF THE WILLAMETTE MERIDIAN, OREGON.

## DEPENDENT RESURVEY AND SUBDIVISION OF SECTION 3

Sec. 32

Sec. 33

Sec. 34

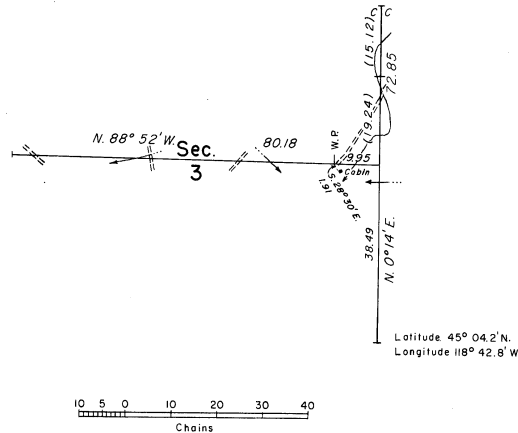
This plat represents a retracement and reestablishment of the line between sections 2 and 3, designed to restore the corners in their true original locations according to the best available evidence, and, the subdivision of section 3.

The lottings and areas are as shown on the plat approved January 7, 1884.

The First Standard Parallel South (north boundary of the township) was surveyed by George S. Pershin in 1882. The subdivisional lines were surveyed by Frank W. Campbell in 1883.

Survey executed by Donald R. Beck, Cadastral Surveyor, April 12 to 17, 1968, under Special Instructions dated March 1, 1968, which provide for the surveys included under Group No. 667, Oregon.

Sec. 4



Sec. 2

Sec. 9

Sec. 10

Sec. 11

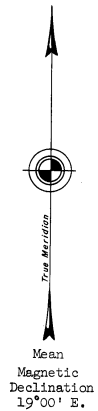
UNITED STATES DEPARTMENT OF THE INTERIOR  
BUREAU OF LAND MANAGEMENT  
Washington, D. C. September 24, 1968

This plat is strictly conformable to the approved field notes, and the survey, having been correctly executed in accordance with the requirements of law and the regulations of this Bureau, is hereby accepted.

For the Director

*R. E. Brown*

Chief, Division of Engineering



Timber in this area consists of ponderosa and lodgepole pine.