

ANDERSON-PERRY & ASSOCIATES
1901 N. FIR ST., LA GRANDE, OR., 97850

REMONUMENTATION SURVEY
6TH STREET (COLUMBIA RIVER HIGHWAY)
SECTIONS 17 & 18; T5N R28E W.M.
UMATILLA COUNTY

CITY OF UMATILLA & ODOT REGION 5
700 6TH STREET
UMATILLA, OR. 97882

MARCH 2021
SCALE: 1"=100'
SHEET 1 OF 3

S. 1/2 OF N.W. 1/4 & S.W. 1/4 OF NE 1/4
& S.E. OF SEC. 17,
& S.E. 1/4 OF N.E. 1/4 OF SEC 18
T.5N, R. 28E, W.M.



LEGEND			
○	FOUND FORMER MONUMENT	—	EXISTING RIGHT-OF-WAY
●	SET NEW MONUMENT	- - - -	PROPERTY LINE
△	FOUND NETWORK POINT	— — —	MAIN CENTERLINE
◇	FOUND STRATEGIC POINT	- - - -	MINOR CENTERLINE
()	RECORD DATA PER COUNTY SURVEY 95-22-C	###	MONUMENT POINT NUMBER

RECOVERED/SET MONUMENT TABLE				
PT. NO.	LDP NORTHING	LDP EASTING	DATE	DESCRIPTION & REFERENCES
1000	822167.24	8494610.23	3/4/21	FOUND 3" BRASS CAP, "OREGON DOT STA. 210+00.00 POT"; MOS 95-22-C
1001	822151.52	8494701.25	1/5/21	FOUND 3/4" IRON PIPE W/LEAD PLUG AND SCREW; MOS K-24-B; O-1087-AX; 03-64-B
1002	822263.31	8495095.74	1/26/21	SET MAGNAIL W/WASHER MARKED "APA 60000LS" IN CONCRETE
1004	822416.73	8495343.01	1/26/21	SET MAGNAIL W/WASHER MARKED "APA 60000LS" IN CONCRETE
1005	822338.92	8495215.46	1/5/21	FOUND 3" BRASS CAP IN MON BOX "OREGON DOT 216+29.10"; MOS 95-22-C
1009	822611.56	8496026.17	1/5/21	FOUND 1" IRON PIPE W/LEAD PLUG AND SCREW; MOS E-2-AX; 06-404-AX; J-119-A; 06-522-B
1010	822701.96	8496343.56	1/26/21	SET 5/8" REBAR WITH 1 1/2" ALUMINUM CAP MARKED "APA 60000 LS" FLUSH W/GROUND
1011	822674.32	8496247.50	1/26/21	SET MAGNAIL W/WASHER MARKED "APA 60000LS" IN CONCRETE
1023	822165.82	8494748.91	1/26/21	SET MAGNAIL W/WASHER MARKED "APA 60000LS" IN CONCRETE
1081	822624.63	8496365.57	1/26/21	SET MAGNAIL W/WASHER MARKED "APA 60000LS" IN CONCRETE
1088	822570.05	8496173.21	1/26/21	SET MAGNAIL W/WASHER MARKED "APA 60000LS" IN CONCRETE
1095	822246.30	8494741.90	1/26/21	SET MAGNAIL W/WASHER MARKED "APA 60000LS" IN CONCRETE
1100	822318.12	8495288.54	1/5/21	FOUND 5/8" REBAR WITH YELLOW PLASTIC CAP "PLS LS48509"; MOS 04-157-B; 94-149-A

FOUND CONTROL POINT				
PT. NO.	LDP NORTHING	LDP EASTING	DATE	DESCRIPTION
502	822352.67	8494773.47	3/4/21	APA_RPC

NOTES:

POINTS 501 & 502 WERE OBSERVED WITH GPS AND DERIVED FROM OPUS. THE COORDINATES WERE THEN SCALED TO GROUND BY A FACTOR OF 1.000031391 AND TRANSLATED TO THE GRID COORDINATES OF 502.

BEARINGS SHOWN ARE GRID BEARINGS. DISTANCES AND COORDINATES OF OTHER POINTS ARE BASED ON GROUND MEASUREMENTS.

SURVEY NARRATIVE

THE PURPOSE OF THIS SURVEY WAS TO RESET TO THEIR FORMER POSITION, ANY MONUMENTS WHICH WERE DISTURBED OR DESTROYED DURING CONSTRUCTION. THE INITIAL MONUMENT RECOVERY SURVEY FOR THIS PROJECT WAS COMPLETED IN MARCH 2014 (SURVEY 14-023-B). ALL MONUMENTS LISTED IN MY PRIOR SURVEY HAVE BEEN REVISITED. SEE RECOVERY/SET MONUMENT TABLE FOR FURTHER INFORMATION.

*1000: THIS MONUMENT WAS RECOVERED BENEATH A NEW MAT OF ASPHALT AND ITS POSITION WAS VERIFIED AS UNDISTURBED. A NEW MONUMENT BOX WAS PLACED AROUND IT BY THE ODOT QA CREW TO FURTHER PROTECT IT.

*1052: THIS MONUMENT WAS LOCATED IN 2014 AND APPEARED TO STILL BE IN PLACE BASED ON METAL DETECTOR SIGNALS BUT IT IS BENEATH A SUBSTANTIAL CONCRETE MEDIAN AND IS ESSENTIALLY USELESS. AFTER A DISCUSSION WITH ODOT, IT WAS DECIDED TO SET NEW A MONUMENT IN THE TOP OF THE NEW CONCRETE AT THE SAME HORIZONTAL POSITION.

POINT #1130 AND #1131 ARE NEW MONUMENTS WHICH WERE DISCOVERED AND THEIR POSITIONS AND DESCRIPTIONS HAVE BEEN INCLUDED IN THE TABLE ON SHEET 3.

RECEIVED BY

Umatilla County Surveyor
Date: MAR 23 2021
Rec'd By: TMA
No.: 21-028-B



REGISTERED PROFESSIONAL LAND SURVEYOR

OREGON
JUNE 13, 2008
JEFFREY A. MADSEN
60000LS

EXPIRES: 12/31/22
Signed: 3/17/21

ANDERSON-PERRY & ASSOCIATES
1901 N. FIR ST., LA GRANDE, OR., 97850

REMONUMENTATION SURVEY
6TH STREET (COLUMBIA RIVER HIGHWAY)
SECTIONS 17 & 18; T5N R28E W.M.
UMATILLA COUNTY

CITY OF UMATILLA & ODOT REGION 5
700 6TH STREET
UMATILLA, OR. 97882

MARCH 2021
SCALE: 1"=100'
SHEET 2 OF 3

S. 1/2 OF N.W. 1/4 & S.W. 1/4 OF NE 1/4
& S.E. OF SEC. 17,
& S.E. 1/4 OF N.E. 1/4 OF SEC 18
T.5N, R. 28E, W.M.



LEGEND

- FOUND FORMER MONUMENT
- SET NEW MONUMENT
- ⊕ FOUND BENCHMARK
- △ FOUND NETWORK POINT
- ◇ FOUND STRATEGIC POINT
- () RECORD DATA PER COUNTY SURVEY 95-22-C
- EXISTING RIGHT-OF-WAY
- - - - - PROPERTY LINE
- MAIN CENTERLINE
- - - - - MINOR CENTERLINE
- ### MONUMENT POINT NUMBER

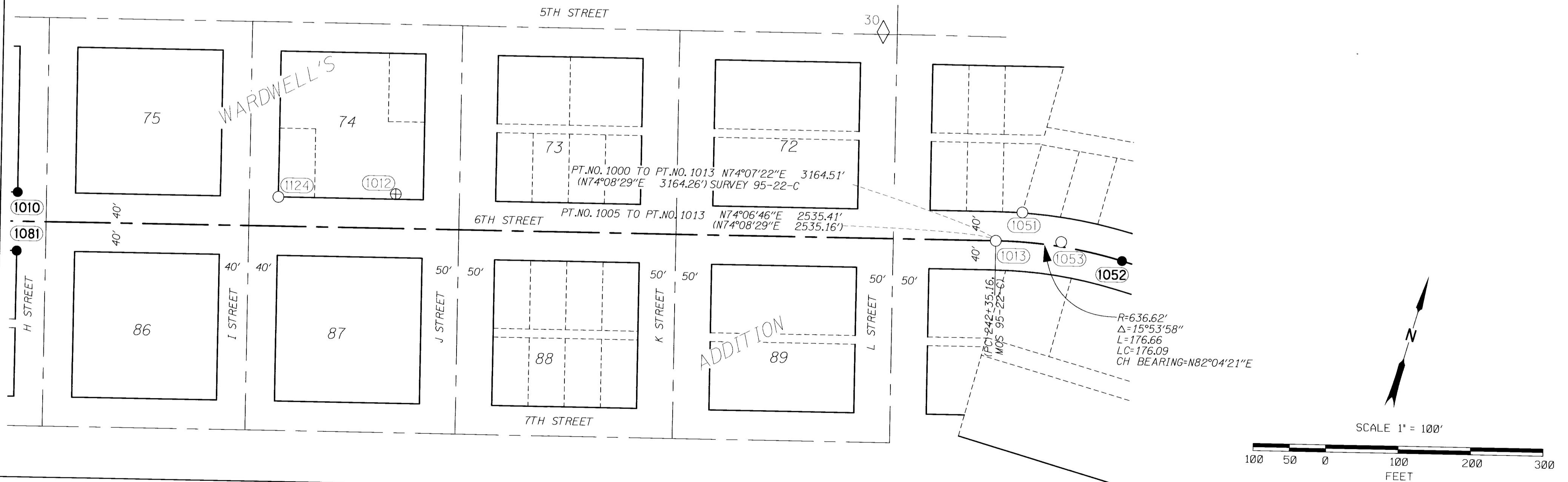
FOUND CONTROL POINT				
PT. NO.	LDP NORTHING	LDP EASTING	DATE	DESCRIPTION
30	823261.58	8497422.13	1/26/21	APA_MAG

RECOVERED/SET MONUMENT TABLE

PT. NO.	LDP NORTHING	LDP EASTING	DATE	DESCRIPTION & REFERENCES
1010	822701.96	8496343.56	1/26/21	SET 5/8" REBAR WITH 1 1/2" ALUMINUM CAP MARKED "APA 60000 LS" FLUSH W/GROUND
1012	822851.40	8496843.60	1/5/21	FOUND 3 1/2" BRASS CAP IN CONCRETE WALL "BM F640 1968 USGS"
1013	823032.97	8497654.01	1/5/21	FOUND 3" BRASS CAP IN MON BOX, MARKINGS ILLEGIBLE; MOS 95-22-C
1051	823080.79	8497677.75	1/5/21	MAGNETIC LOCATOR INDICATED FORMER MONUMENT WAS UNDER NEW ASPHALT - NOT RETIED DUE TO ADDITIONAL UPCOMING CONSTRUCTION BY OTHERS
1052	823057.22	8497828.41	3/4/21	SET 1 1/8" DIA. COPPER CAP WITH 5/16" DIA. X 1 11/16" LONG STEM; STAMPED "APA 244+11.18 PT"; SET IN CONCRETE MEDIAN
1053	823057.62	8497740.71	1/5/21	MAGNETIC LOCATOR INDICATED FORMER MONUMENT WAS UNDER NEW ASPHALT - NOT RETIED DUE TO ADDITIONAL UPCOMING CONSTRUCTION BY OTHERS
1081	822624.63	8496365.57	1/26/21	SET MAGNAIL W/WASHER MARKED "APA 60000LS" IN CONCRETE
1124	822799.90	8496689.73	1/5/21	FOUND 5/8" REBAR (NO CAP); MOS Q-1095-AX

RECEIVED BY
Umatilla County Surveyor
Date: MAR 23 2021
Rec'd By: JMA
No.: 21-028-B

REGISTERED
PROFESSIONAL
LAND SURVEYOR
Jeffrey A. Madsen
OREGON
JUNE 13, 2008
JEFFREY A. MADSEN
60000LS
EXPIRES: 12/31/22
SIGNED: 3/17/21



ANDERSON-PERRY & ASSOCIATES
1901 N. FIR ST., LA GRANDE, OR., 97850

REMONUMENTATION SURVEY
6TH STREET (COLUMBIA RIVER HIGHWAY)
SECTIONS 17 & 18; T5N R28E W.M.
UMATILLA COUNTY

CITY OF UMATILLA & ODOT REGION 5
700 6TH STREET
UMATILLA, OR. 97882

MARCH 2021
SCALE: 1"=100'
SHEET 3 OF 3

S. 1/2 OF N.W. 1/4 & S.W. 1/4 OF NE 1/4
& S.E. OF SEC. 17,
& S.E. 1/4 OF N.E. 1/4 OF SEC 18
T.5N, R. 28E, W.M.



FOUND CONTROL POINT

PT. NO.	LDP NORTHING	LDP EASTING	DATE	DESCRIPTION
19	822876.12	8497981.80	1/26/21	APA_MAG
29	823351.69	8498489.54	1/26/21	APA_NLSPK
501	823020.67	8499257.86	1/26/21	APA RPC (1/2" REBAR W/RED PLASTIC CAP)

LEGEND			
○	FOUND FORMER MONUMENT	—	EXISTING RIGHT-OF-WAY
●	SET NEW MONUMENT	- - - - -	PROPERTY LINE
△	FOUND NETWORK POINT	— — — — —	MAIN CENTERLINE
◇	FOUND STRATEGIC POINT	- - - - -	MINOR CENTERLINE
()	RECORD DATA PER COUNTY SURVEY 95-22-C	###	MONUMENT POINT NUMBER

RECOVERED/SET MONUMENT TABLE

PT. NO.	LDP NORTHING	LDP EASTING	DATE	DESCRIPTION & REFERENCES
1006	823096.99	8498861.23	1/5/21	FOUND 1/2" REBAR W/YELLOW PLASTIC CAP 'EDWARDS LS951'; MOS 93-100-B
1130	823015.67	8498991.51	1/26/21	FOUND 1" BRASS CAP 'ODOT'; NEW MON. FOUND NEAR GENERAL POSITION OF *1019; MOS 18-083-B
1131	823016.68	8498931.57	1/26/21	FOUND 1" BRASS CAP 'ODOT'; NEW MON. FOUND NEAR GENERAL POSITION OF *1007; MOS 18-083-B
1014	823016.47	8498221.11	1/5/21	FOUND 5/8" REBAR W/YELLOW PLASTIC CAP 'EDWARDS'; MOS Q-919-B
1055	823016.37	8498028.32	1/26/21	SET BRASS SCREW IN LEAD PLUG
1037	823017.31	8498221.22	1/26/21	FOUND 1/2" REBAR W/YELLOW PLASTIC CAP, ILLEGIBLE; MOS Q-919-B; S-126-AX
1038	823016.46	8498421.30	1/5/21	FOUND 1/2" REBAR (NO CAP); MOS Q-919-B; S-126-AX
1049	823097.97	8497835.42	1/5/21	FOUND 1" IRON PIPE
1052	823057.22	8497828.41	3/4/21	SET 1 1/8" DIA. COPPER CAP WITH 5/16" DIA. X 1 11/16" LONG STEM; STAMPED "APA 244+11.18 PT"; SET IN CONCRETE MEDIAN
1053	823057.62	8497740.71	1/5/21	MAGNETIC LOCATOR INDICATED FORMER MONUMENT WAS UNDER NEW ASPHALT - NOT RETIED DUE TO ADDITIONAL UPCOMING CONSTRUCTION BY OTHERS

RECEIVED BY
Umatilla County Surveyor
Date: MAR 23 2021
Rec'd By: JMA
No.: 21-028-B

REGISTERED
PROFESSIONAL
LAND SURVEYOR
Jeffrey A. Madsen
OREGON
JUNE 13, 2008
JEFFREY A. MADSEN
60000LS
EXPIRES: 12/31/27
Signed: 3/17/21

