

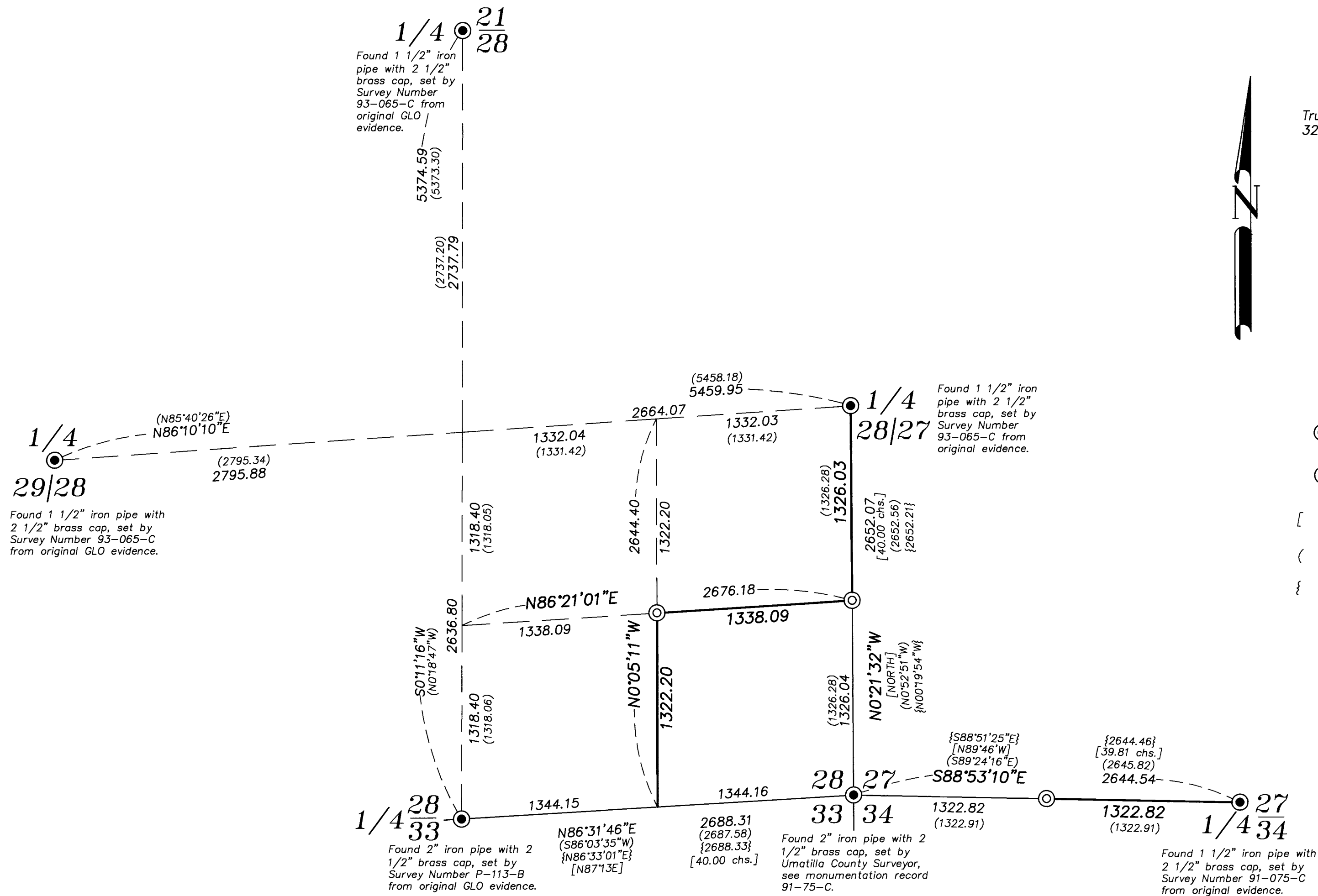
# BASIS OF BEARING

True Geodetic North at the corner common to Sections 28, 29, 32 and 33, Township 4 North, Range 37 East of the Willamette Meridian, as determined by GPS observation

SCALE: 1" = 600'

## LEGEND

- Found monument as described, as per Umatilla County Monumentation records
- Set 5/8" x 30" iron pin with 2 1/2" aluminum cap, marked as per Umatilla County Monumentation records, filed separately
- [ ] Record measurement as per field notes of GLO Contract Number 332, dated July 29, 1879, executed by George Pershin
- ( ) Record measurement as per Survey Number N-065-B
- { } Record measurement as per Survey Number 93-065-C



### NARRATIVE

This survey was done at the request of Patrick Marolla on behalf of Hancock Forest Management. Mr. Marolla wanted select property monuments set prior to logging.

I recover the monuments as shown hereon and accept them as found. I place the 1/16ths as per the 2009 BLM Manual of Instructions. I find no other unusual conditions with this survey.

REGISTERED  
PROFESSIONAL  
LAND SURVEYOR

OREGON  
JUNE 2, 2010  
JEFFREY S. HSU  
83571

Renewal Date: June 30, 2021

### REFERENCE MATERIAL

Survey Number N-65-B  
Survey Number Q-0750-B  
Survey Number 91-075-C  
Survey Number 93-065-C  
Survey Number 94-74-B  
Survey Number 95-164-A  
Survey Number 98-236-B  
Partition Plat 1998-13  
Partition Plat 1990-14  
Plat of Lincton Mountain Highlands No. 2

Field Notes from GLO Contract No. 114, dated July 2, 1866, executed by William Odell

Field Notes from GLO Contract No. 332, dated July 29, 1879, executed by George S. Pershin

DEED REFERENCES  
Book 190, Page 393  
MF R-50, Page 803  
MF 2013 6120649  
MF 2013 6120654  
MF 2013 6120650

### RECEIVED BY

Umatilla County Surveyor  
Date: 8/31/20  
Rec'd By: CT  
No.: 20-072-B

BAGETT, GRIFFITH & BLACKMAN  
2006 Adams Avenue, LaGrande, Oregon  
Map of Survey

Situate in Sections 27 and 28, Township 4 North, Range 37 East of the Willamette Meridian

UMATILLA COUNTY, OREGON

SURVEYED FOR	Hancock Forest Management	
SURVEYED BY	J. S. H.	
Scale: 1" = 600'	Drawn by: K. A. T.	August 2020