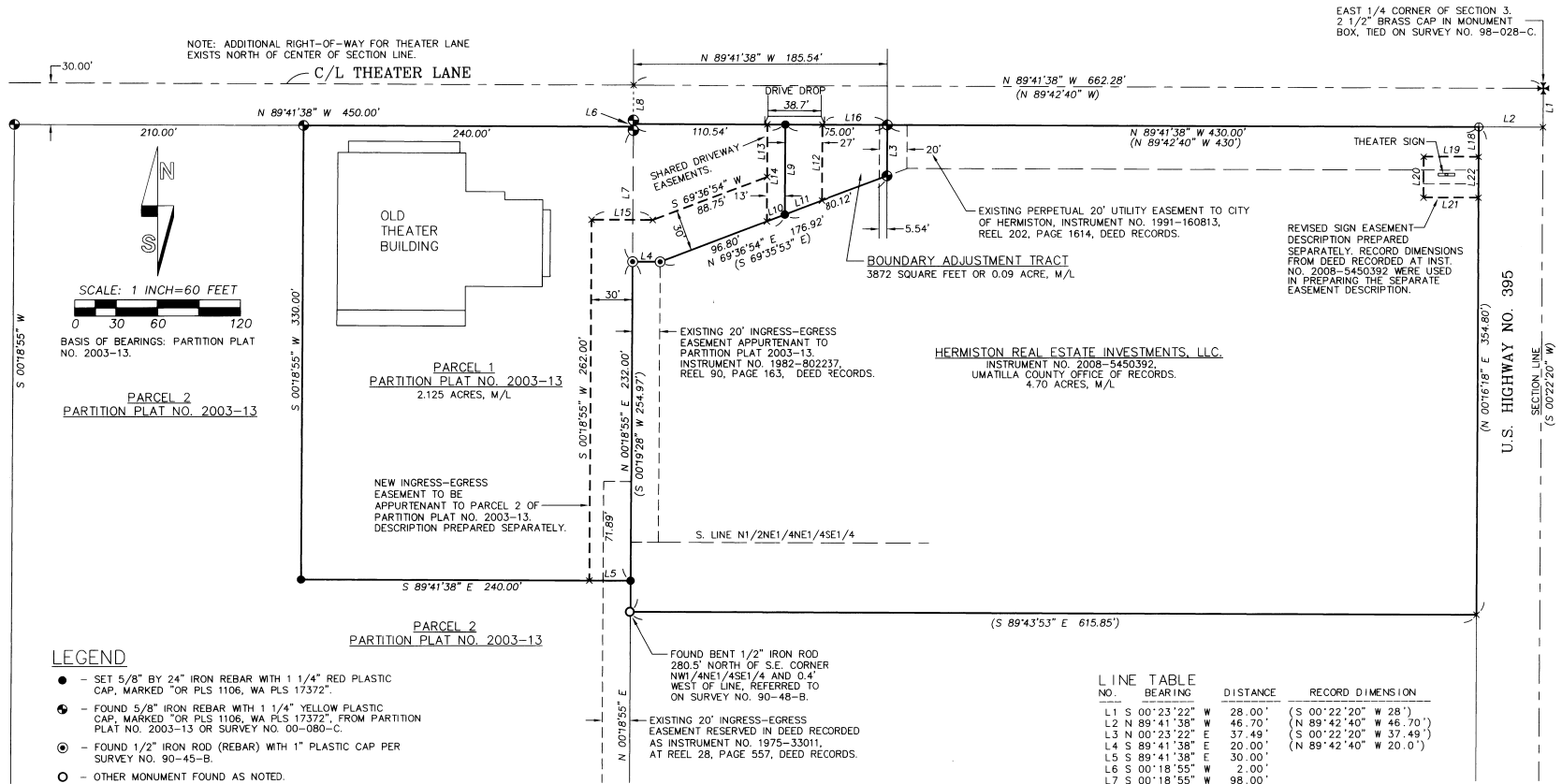
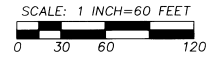


RECORD OF SURVEY



NOTE: ADDITIONAL RIGHT-OF-WAY FOR THEATER LANE EXISTS NORTH OF CENTER OF SECTION LINE.

EAST 1/4 CORNER OF SECTION 3.
2 1/2" BRASS CAP IN MONUMENT BOX, TIED ON SURVEY NO. 98-028-C.



BASIS OF BEARINGS: PARTITION PLAT NO. 2003-13.

PARCEL 2
PARTITION PLAT NO. 2003-13

PARCEL 1
PARTITION PLAT NO. 2003-13
2.125 ACRES, M/L

NEW INGRESS-EGRESS EASEMENT TO BE APPURTENANT TO PARCEL 2 OF PARTITION PLAT NO. 2003-13. DESCRIPTION PREPARED SEPARATELY.

PARCEL 2
PARTITION PLAT NO. 2003-13

HERMISTON REAL ESTATE INVESTMENTS, LLC.
INSTRUMENT NO. 2008-5450392,
UMATILLA COUNTY OFFICE OF RECORDS.
4.70 ACRES, M/L

REVISED SIGN EASEMENT DESCRIPTION PREPARED SEPARATELY. RECORD DIMENSIONS FROM DEED RECORDED AT INST. NO. 2008-5450392 WERE USED IN PREPARING THE SEPARATE EASEMENT DESCRIPTION.

LEGEND

- - SET 5/8" BY 24" IRON REBAR WITH 1 1/4" RED PLASTIC CAP, MARKED "OR PLS 1106, WA PLS 17372".
- - FOUND 5/8" IRON REBAR WITH 1 1/4" YELLOW PLASTIC CAP, MARKED "OR PLS 1106, WA PLS 17372", FROM PARTITION PLAT NO. 2003-13 OR SURVEY NO. 00-080-C.
- ⊙ - FOUND 1/2" IRON ROD (REBAR) WITH 1" PLASTIC CAP PER SURVEY NO. 90-45-B.
- - OTHER MONUMENT FOUND AS NOTED.
- ⊗ - CALCULATED POINT ONLY, NOT SET OR FOUND.
- (XOX) - RECORD DIMENSION PER STATUTORY WARRANTY DEED RECORDED AS INSTRUMENT NO. 2008-5450392, UMATILLA COUNTY OFFICE OF RECORDS.

NOTE: DIMENSIONS SHOWN ON THIS MAP, WHICH ARE COMMON WITH DIMENSIONS REPORTED ON SURVEY NO. 00-080-C AND PARTITION PLAT 2003-13, ARE IDENTICAL.

AREA SUMMARY

AREA OF EXISTING TAX LOT 1100 = 2.125 ACRES, M/L, BY SURVEY.
REVISED AREA OF TAX LOT 1100 = 2.035 ACRES, M/L, BY SURVEY.
AREA OF EXISTING TAX LOT 100 = 4.70 ACRES, M/L, BY ASSESSOR MAP.
AREA OF REVISED TAX LOT 100 = 4.79 ACRES, M/L.
TAX LOTS REFER TO ASSESSOR MAP NO. 4N 28 03D.

NARRATIVE

THIS BOUNDARY ADJUSTMENT SURVEY WAS MADE AT THE REQUEST OF JODEE KELLY OF LANDYE BENNETT BLUMSTEIN, LLP, REPRESENTING HERMISTON REAL ESTATE INVESTMENTS, LLC. THE PURPOSE OF THE SURVEY WAS FOR A BOUNDARY ADJUSTMENT BETWEEN TAX LOTS 1100 AND 100, UMATILLA COUNTY ASSESSOR MAP NO. 4N 28 03D. SEVERAL EASEMENT DESCRIPTIONS WERE ALSO PREPARED, TO BE RECORDED IN SEPARATE INSTRUMENTS.

THE BASIS OF CONTROL FOR THE SURVEY IS PARTITION PLAT NO. 2003-13. WE TIED INTO MONUMENTS FROM THAT SURVEY, AS INDICATED ON THIS RECORD OF SURVEY, AND ESTABLISHED TWO NEW MONUMENTS AT THE PROPOSED DIVISION LINE FOR THE BOUNDARY ADJUSTMENT.

THE SURVEY WAS MADE BY A 2 PERSON CREW USING A LEICA TCR 803, 3 SECOND TOTAL STATION BY A COMBINATION OF CLOSED TRAVERSES AND RADIAL TIES. CORNER SET AND TIES WERE VERIFIED BY REDUNDANT MEASUREMENTS.

LINE NO.	BEARING	DISTANCE	RECORD DIMENSION
L1	S 00°23'22" W	28.00'	(S 00°22'20" W 28')
L2	N 89°41'38" W	46.70'	(N 89°42'40" W 46.70')
L3	N 00°23'22" E	37.49'	(S 00°22'20" W 37.49')
L4	S 89°41'38" E	20.00'	(N 89°42'40" W 20.0')
L5	S 89°41'38" E	30.00'	
L6	S 00°18'55" W	2.00'	
L7	S 00°18'55" W	98.00'	
L8	N 00°18'55" E	28.00'	
L9	S 00°18'55" W	65.80'	
L10	N 69°36'54" E	13.90'	
L11	N 69°36'54" E	28.86'	
L12	N 00°18'55" E	55.60'	
L13	S 00°18'55" W	38.64'	
L14	S 00°18'55" W	70.71'	
L15	N 89°41'38" W	44.52'	
L16	N 89°41'38" W	48.00'	
L18	S 00°16'18" W	22.00'	
L19	N 89°42'40" W	40.00'	
L20	S 00°16'18" W	30.00'	
L21	S 89°42'40" E	40.00'	
L22	N 00°16'18" E	30.00'	

REGISTERED PROFESSIONAL LAND SURVEYOR

Wick R. Wells

OREGON
JULY 22, 1977
WILLIAM R. WELLS
1106
RENEWS 6/30/10

WELLS SURVEYING
2602 N.E. RIVERSIDE PLACE
P.O. BOX 1696
PENDLETON, OR 97801
PHONE: (541) 276-6362

DATE: 05/09 DR. BY: WRW
CK. BY: WRW NO: 09-1231

PROJECT:
BOUNDARY ADJUSTMENT SURVEY FOR:
HERMISTON REAL ESTATE INVESTMENTS, LLC.

LOCATED IN THE SE1/4 OF SECTION 3, TOWNSHIP 4 NORTH, RANGE 28 EAST, W.M., CITY OF HERMISTON, UMATILLA COUNTY, OREGON.

7-09
JK
05/10/09