

ADVENT ST.

N. 25° 58' W. 277.2



Plat Showing Various
Land Descriptions
in
City of Milton, Ore.

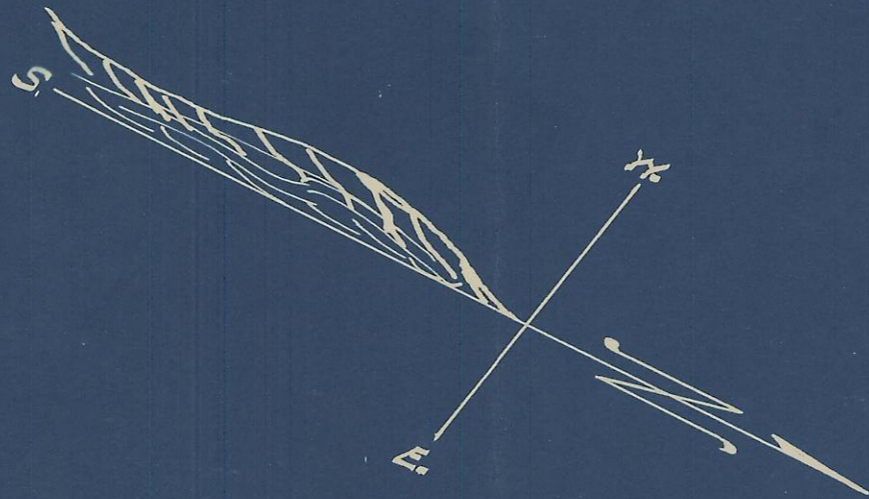
- "A" - City of Milton to Elsie Samuel.
- "B" - Elsie Samuel to City of Milton.
- 1 J.O. Kenyon to Elsie D. Samuel. } Mar. 28-1924.
- 2 " " " " }
- 3 " " " " }
- 4 _____
- 5 _____
- 6 _____
- 7 _____

Scale 1" = 30 Feet.
Platted & Checked Dec-1935
By: W.E.O. Criger - R.C.E.

QUARTZ ST.

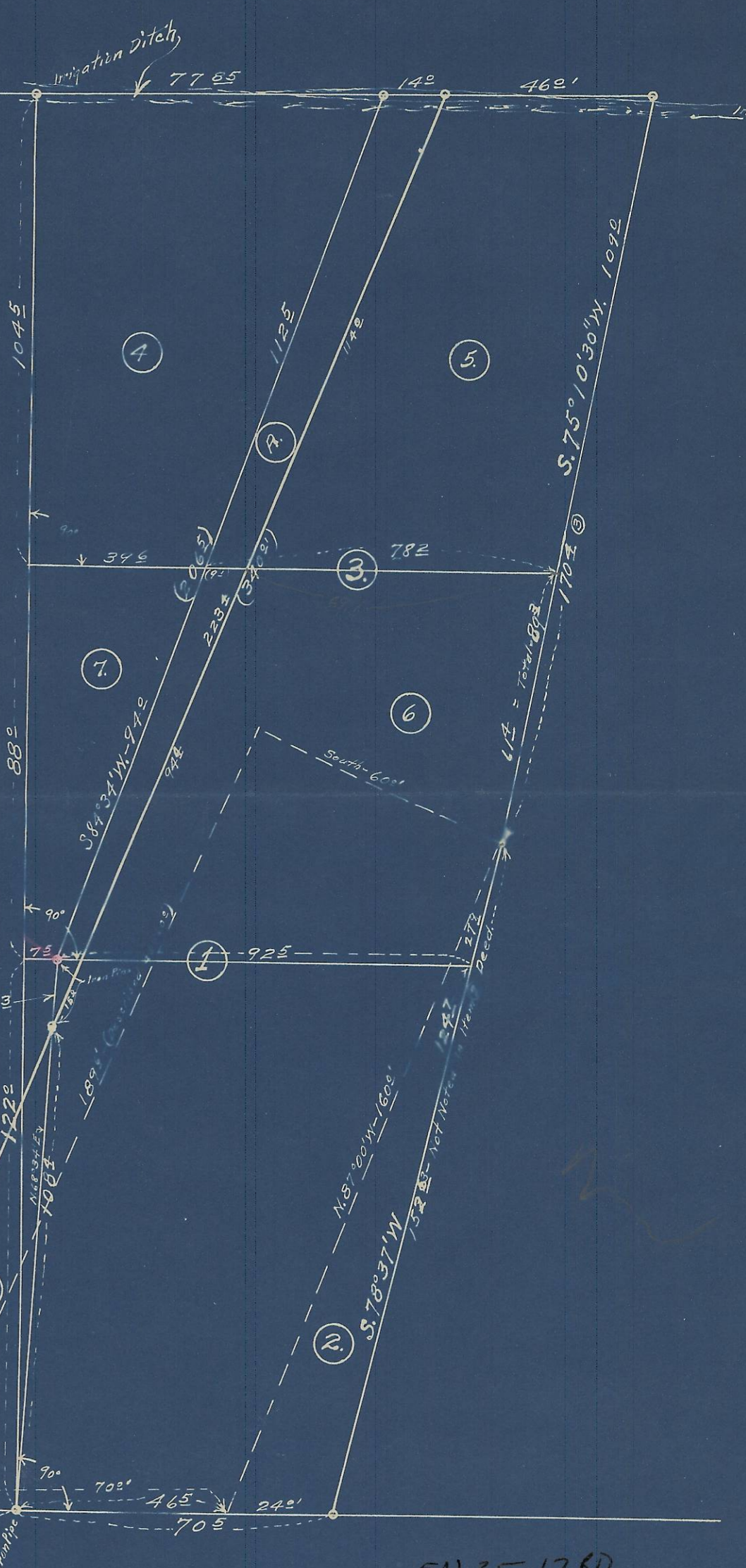
S. 65° 00' W. - 310'

SITE of CITY HALL - MILTON, ORE.



N. 25° 00' W. - 240'

MAIN ST.



N.E. Cor. Lot 8, Blk 6,
NE Coys Addition.

5N 35 126D

07-129-B