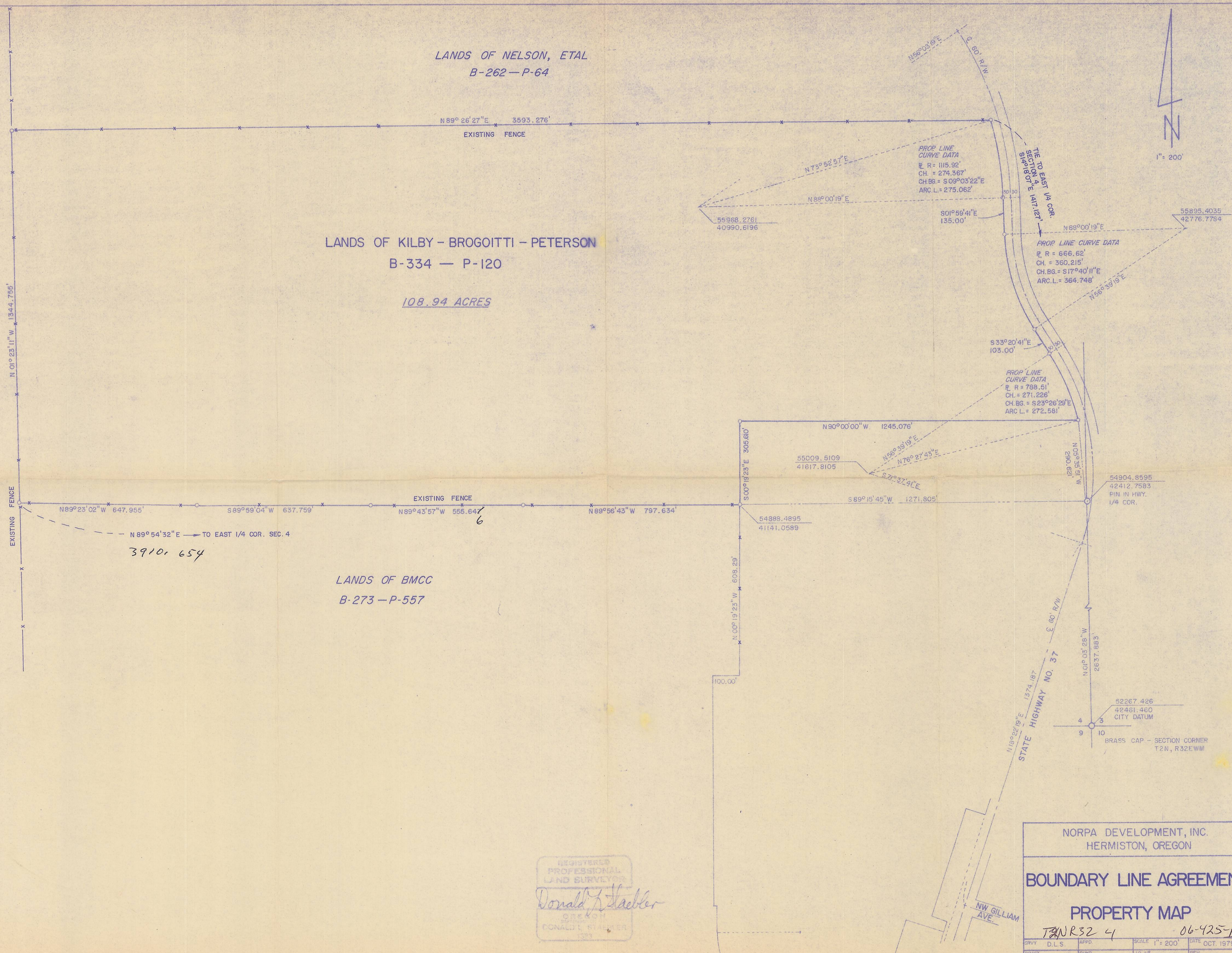


LANDS OF NELSON, ETAL  
B-262 - P-64

LANDS OF KILBY - BROGOITTI - PETERSON  
B-334 - P-120  
108.94 ACRES

LANDS OF BMCC  
B-273 - P-557

LANDS OF SCHUENING B-177 - P-452



1" = 200'



REGISTERED  
PROFESSIONAL  
LAND SURVEYOR  
*Donald L. Haebler*  
OREGON  
DONALD L. HAEBLER  
1983

NORPA DEVELOPMENT, INC.  
HERMISTON, OREGON

**BOUNDARY LINE AGREEMENT**

**PROPERTY MAP**

T2N R32 E 4 06-425-B

DRYV	D.L.S.	APPD	SCALE	1" = 200'	DATE	OCT. 1979
DRAFT	D.N.	CHKD	U.O. N°	79-005	REV.	

3910.654

6

EXISTING FENCE

N 01° 23' 11" W 1344.755'

N 89° 26' 27" E 3593.276'  
EXISTING FENCE

PROF. LINE CURVE DATA  
R = 1115.92'  
CH. = 274.367'  
CH.BG. = S 09° 03' 22" E  
ARC L. = 275.062'

PROF. LINE CURVE DATA  
R = 666.62'  
CH. = 360.215'  
CH.BG. = S 17° 40' 11" E  
ARC L. = 364.748'

PROF. LINE CURVE DATA  
R = 788.51'  
CH. = 271.226'  
CH.BG. = S 23° 26' 29" E  
ARC L. = 272.581'

N 90° 00' 00" W 1245.076'

55009.5109  
41617.8105

S 00° 18' 25" E 305.610'

N 56° 39' 19" E  
N 76° 27' 45" E  
S 72° 37' 41" E

S 89° 15' 45" W 1271.805'

54888.4895  
41141.0589

N 00° 19' 23" W 608.29'

100.00'

STATE HIGHWAY NO. 37  
N 18° 22' 19" E 1374.187'

54904.8595  
42412.7583  
PIN IN HWY.  
1/4 COR.

52267.426  
42461.460  
CITY DATUM

BRASS CAP - SECTION CORNER  
T2N, R32EWM

NW GILLIAM AVE.