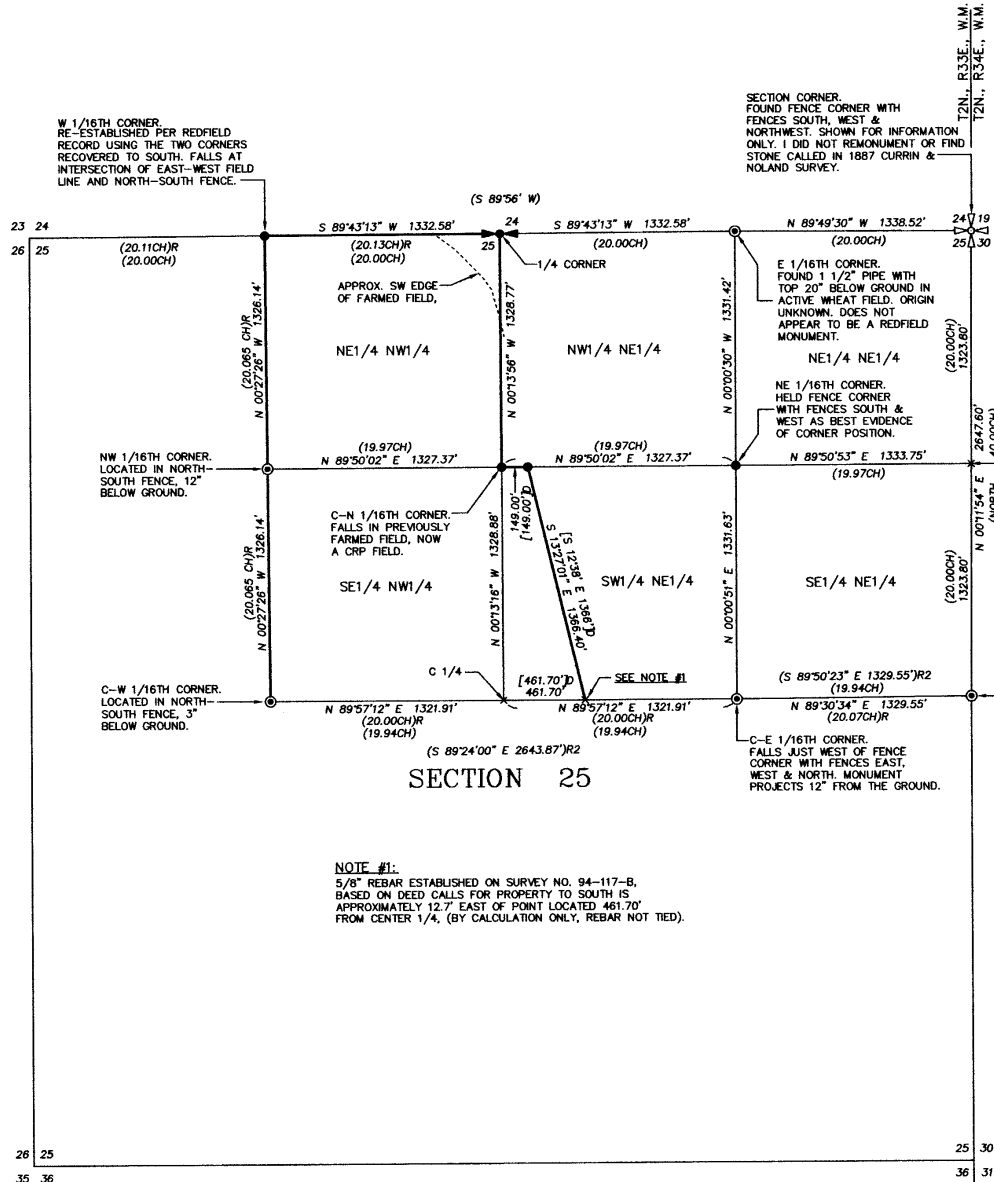
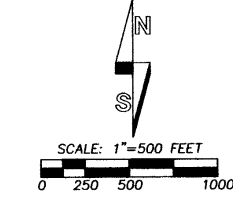


RECORD OF SURVEY



SECTION CORNER. FOUND FENCE CORNER WITH FENCES SOUTH, WEST & NORTHWEST. SHOWN FOR INFORMATION ONLY. I DID NOT REMONUMENT OR FIND STONE CALLED IN 1887 CURRIN & NOLAND SURVEY.



LEGEND

- APPROXIMATE SECTION CORNER LOCATION AS NOTED.
- REESTABLISHED 1/4 CORNER. SEE CORNER RECORD FILED CONCURRENTLY WITH THIS SURVEY.
- SET 5/8 BY 30" IRON REBAR WITH 1 1/4" YELLOW PLASTIC CAP MARKED "OR PLS 1106 WA PLS 17372".
- FOUND 2 1/2" BRASS CAP ON 2" GALV. IRON PIPE BY C.E. REDFIELD, U.S. INDIAN SERVICE SURVEYOR, ESTABLISHED BETWEEN 1918 AND 1920, UNLESS OTHERWISE NOTED.
- CALCULATED POINT ONLY, NOT SET OR FOUND.
- (XOX)* - INDICATES RECORD DIMENSION FROM SURVEY BY CURRIN AND NOLAND UNDER SPECIAL CONTRACT DATED MAY 4, 1887.
- (XOX)R* - INDICATES RECORD DIMENSION FROM SURVEY BY C.E. REDFIELD, U.S. INDIAN SERVICE SURVEYOR, MADE BETWEEN 1918 AND 1920.
- (XOX)D* - INDICATES RECORD DIMENSION FROM DEED RECORDED AS INSTRUMENT NO. 2000-3660774, OFFICE OF COUNTY RECORDS.
- (XOX)R2* - INDICATES RECORD DIMENSION FROM UMATILLA COUNTY SURVEY NO. 94-117-B, BY WELLS, 1994.

"BASIS OF BEARINGS"; BEARINGS ARE BASED ON G.P.S. GEODETIC OBSERVATION TAKEN 100 FEET EAST OF THE NORTH 1/4 CORNER OF SECTION 25.

1/16TH CORNER. CORNER SEARCHED BUT NOT FOUND. FALLS IN FARM GROUND, NOW IN CRP. SHOWN FOR INFORMATION ONLY.

NARRATIVE:

THIS SURVEY WAS MADE AT THE REQUEST OF KELLY CAHILL TO RECOVER OR REESTABLISH THE NORTH 1/4 CORNER OF SECTION 25, THE CENTER-NORTH 1/16TH CORNER OF SECTION 25 AND THE ANGLE POINT IN THE SOUTH LINE OF THE NW1/4 OF THE NE1/4 OF SECTION 25, 149 FEET EAST OF THE CENTER-NORTH 1/16TH CORNER.

SECTION 26 WAS ORIGINALLY SUBDIVIDED BY THE "THREE MILE RULE", COMMONLY USED ON INDIAN RESERVATION LAND. THE "THREE MILE RULE" OR MODIFICATIONS THEREOF AS REPORTED BY C.E. REDFIELD, WERE USED ON THIS SURVEY TO REESTABLISH REQUIRED CORNER LOCATIONS. MONUMENTS FOUND AND HELD ON THIS SURVEY ARE SHOWN. REESTABLISHED POSITIONS FOR THE REQUIRED SECTION BREAKDOWN CORNERS AS INDICATED BELOW:

WEST 1/16TH CORNER ON NORTH LINE OF SECTION 25: C.E. REDFIELD'S RECORD INDICATES HE ESTABLISHED THE NW 1/16TH CORNER BY RUNNING NORTH-SOUTH FROM THE WEST 1/16TH CORNER TO THE CENTER-WEST 1/16TH CORNER. I REESTABLISHED THE WEST 1/16TH CORNER USING THE SAME DIMENSION AS MEASURED BETWEEN THE RECOVERED CENTER-WEST 1/16TH AND NW 1/16TH. REESTABLISHED POSITION FALLS IN AN EAST-WEST FIELD LINE AND AN OLD NORTH-SOUTH FENCE LINE. WE DUG A LARGE HOLE AT THE CORNER POINT AND SEARCHED WITH METAL DETECTOR, AND FOUND NOTHING BUT BURIED FENCE WIRE.

NORTH 1/4 CORNER OF SECTION 25: CORNER FALLS IN ACTIVE WHEAT FIELD. NOTHING WAS RECOVERED BY SEARCHING FOR BURIED MONUMENT WITH METAL DETECTOR. REESTABLISHED CORNER BY SINGLE PROPORTION MEASUREMENT BETWEEN THE REESTABLISHED WEST 1/16TH CORNER AND RECOVERED MONUMENT FOR THE EAST 1/16TH CORNER. THERE ARE NO NEARBY POSSESSORY LINES. CORNER RECORD IS FILED CONCURRENTLY WITH THIS RECORD OF SURVEY.

CENTER-NORTH 1/16TH CORNER: CORNER FALLS IN A FORMERLY FARMED FIELD, NOW A CRP FIELD. NOTHING WAS RECOVERED BY SEARCHING FOR BURIED MONUMENT WITH METAL DETECTOR. REESTABLISHED CORNER MIDWAY AND ON LINE BETWEEN THE RECOVERED NW AND NE 1/16TH CORNERS, PER THE "THREE MILE RULE". AN OLD FENCE LINE IS VISIBLE TO THE EAST.

POSITION FOR CENTER 1/4 CORNER: CORNER FALLS IN FORMERLY FARMED FIELD, NOW A CRP FIELD. NOTHING WAS RECOVERED BY SEARCHING FOR BURIED MONUMENT WITH METAL DETECTOR. REESTABLISHED POSITION MIDWAY AND ON LINE BETWEEN THE RECOVERED CENTER-EAST AND CENTER WEST 1/16TH CORNERS, PER THE "THREE MILE RULE".

THIS SURVEY WAS MADE WITH A 2 PERSON CREW USING A TRIMBLE 5700 GEODETIC G.P.S. SYSTEM OPERATED IN REAL TIME KINEMATIC MODE. PRELIMINARY CORNER SEARCHES WERE MADE WITH A TRIMBLE PRO XR BEACON CORRECTED G.P.S. RECEIVER.

NOTE #1:
5/8" REBAR ESTABLISHED ON SURVEY NO. 94-117-B, BASED ON DEED CALLS FOR PROPERTY TO SOUTH IS APPROXIMATELY 12.7' EAST OF POINT LOCATED 461.70' FROM CENTER 1/4, (BY CALCULATION ONLY, REBAR NOT TIED).

SECTION 25

REGISTERED PROFESSIONAL LAND SURVEYOR

William R. Wells

OREGON
JULY 22, 1977
WILLIAM R. WELLS
1106
RENEWS 6/30/06

WILLIAM R. WELLS, PLS
2602 N.E. RIVERSIDE PLACE
P.O. BOX 1696
PENDLETON, OR 97801
PHONE: (541) 276-6362

DATE: 12/2005 DR. BY: WRW
CK. BY: WRW NO: 05-1042

PROJECT:
SURVEY FOR:
KELLY CAHILL

LOCATED IN SECTION 25,
T2N., R33E., W.M.,
UMATILLA COUNTY, OREGON

Umatilla County Surveyor.
Date: *1-06*
Revised: *KK*
No: *06-20-B*