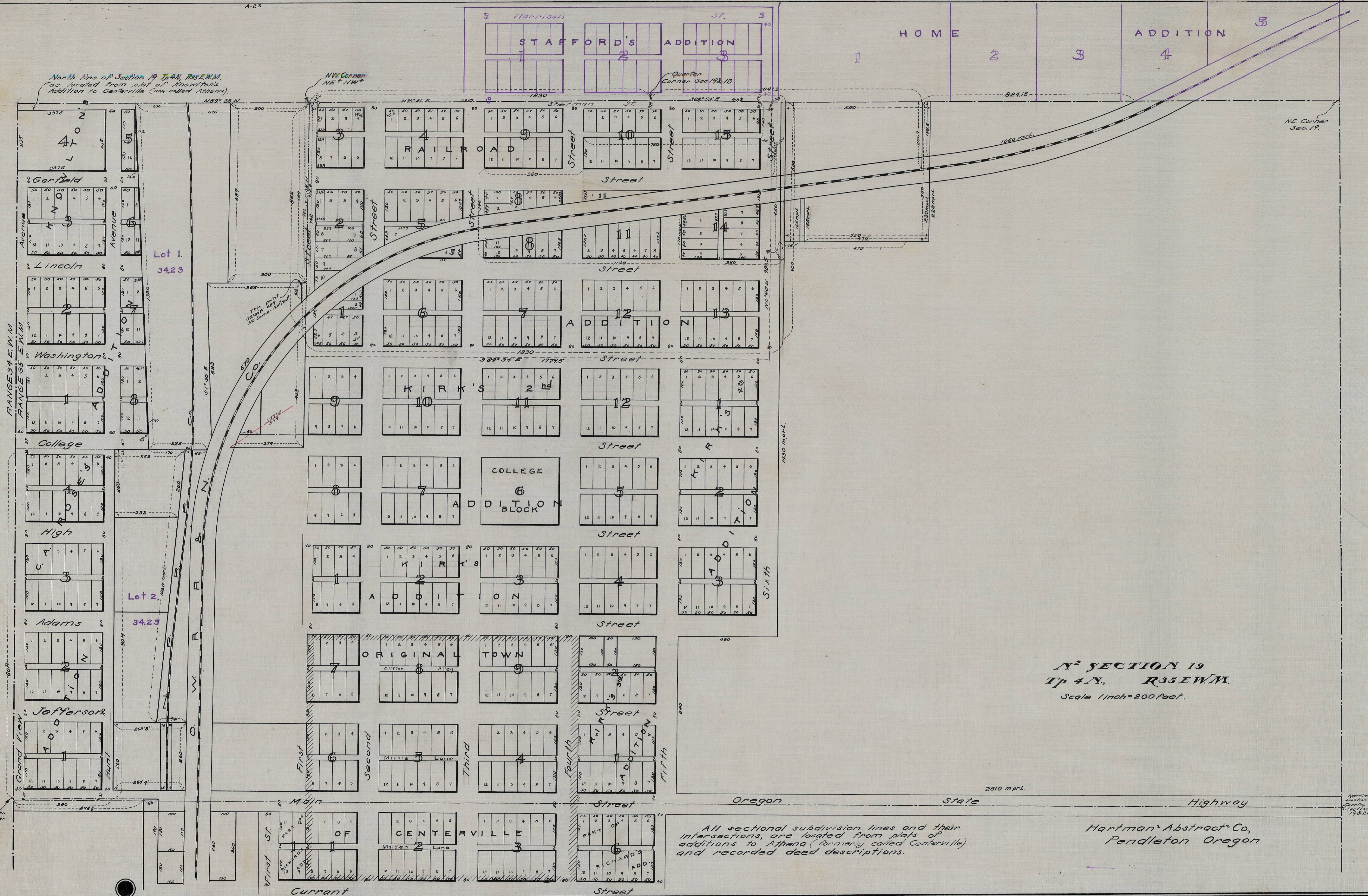


North line of Section 19 T4N, R35E, W1M, as located from plat of Annett's Addition to Centerville (now called Athena).

NW Corner NE 1/4 NW 1/4



Lot 1. 34.23

Lot 2. 34.25

N<sup>2</sup> SECTION 19  
T<sub>4</sub>N, R<sub>35</sub>E, W<sub>1</sub>M.  
Scale 1 inch = 200 feet.

All sectional subdivision lines and their intersections, are located from plats of additions to Athena (formerly called Centerville) and recorded deed descriptions.

Hartman Abstract Co.,  
Pendleton Oregon

Approximate location of Quarter Corner Sec. 19