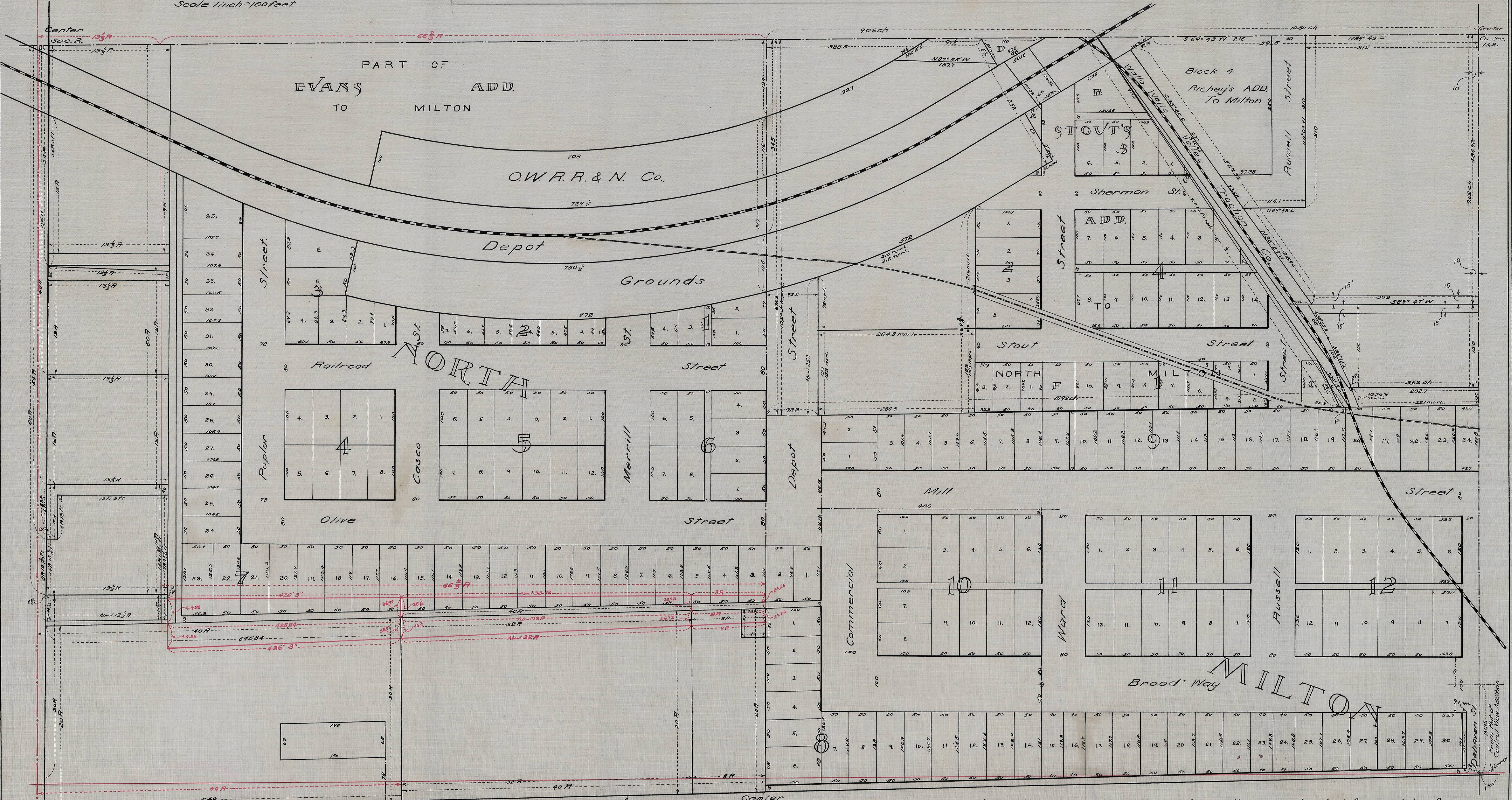


N² SE⁴ SECTION 2
Tp 5 N., R 35 E W.M.
Scale 1 inch = 100 feet.



Hartman Abstract Co.
Pendleton Ore.

Center
SE⁴ Sec 2
North line of the S² SE⁴ Sec 2
as located by A.L. Coffey
County Surveyor in 1882

Note: All sectional subdivision lines and their intersections are located from plats of additions to Milton and recorded deed descriptions.