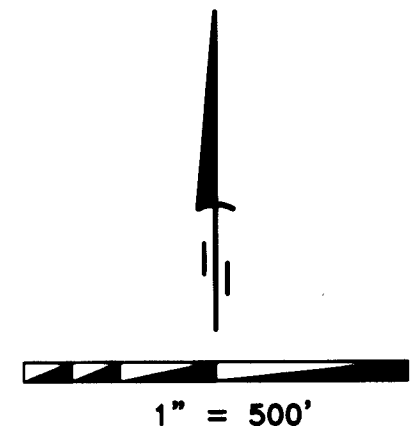


RECORD OF SURVEY

CITY OF UMATILLA, UMATILLA COUNTY, OREGON
 MONUMENT C-E-NE 1/64 SEC 19
 TOWNSHIP 5 NORTH, RANGE 28
 EAST OF THE W.M.,

CLIENT: **UMATILLA COUNTY**
 216 SE 4TH STREET
 PENDLETON, OREGON 97801



LEGEND

- ⊙ SET 2 3/8" BRASS CAP x 30" LONG STAMPED AS SHOWN
- ⊕ FOUND 3 1/4" BRASS CAP STAMPED AS SHOWN
- ⊙ FOUND 2 3/8" BRASS CAP STAMPED AS SHOWN
- × CALCULATED POINT (NOT SET)
- (C) CALCULATED

RECORD OF SURVEYS

- R1 RECORD PER DAVENPORT GLO CONTRACT NO. 101 AUGUST 5 1861
- R2 RECORD PER TUERS, BLM, GROUP NO. 864 APRIL 11 1975
- R3 RECORD PER WELLS SURVEY NO. 98-101-C MARCH 1998
- R4 RECORD PER EDWARDS SURVEY NO. 91-01-B 1991
- R5 RECORD PER NEWBILL BK 8 PG 10 UMATILLA COUNTY TOWN PLATS 1954

SURVEYOR'S NARRATIVE

THIS SURVEY WAS PERFORMED IN CONJUNCTION WITH A CONTRACT WITH UMATILLA COUNTY TO PROVIDE CORNER RECOVERY AND STATE PLANE COORDINATES FOR CITY OF UMATILLA SUBDIVISIONS. THE ORIGINAL SURVEY (UMATILLA CITY CEMETERY) IS RECORDED IN BOOK 8 PAGE 10 OF THE UMATILLA COUNTY TOWN PLATS.

A THROUGH SEARCH WAS MADE FOR THE NORTHEAST CORNER OF THE NORTHWEST 1/4 OF THE NORTHEAST 1/4 OF THE NORTHEAST 1/4 (INITIAL POINT OF SAID ORIGINAL SURVEY) AND NOTHING WAS FOUND.

NEWBILL SET SAID CORNER 660 FEET WEST OF THE NORTHEAST CORNER OF SECTION 19 SEE BOOK 8 PAGE 10 OF THE UMATILLA COUNTY TOWN PLATS.

I RECOVERED THE NORTHEAST CORNER AS WELL AS THE NORTH 1/4 CORNER BOTH OF SECTION 19, THUS MY BASIS OF BEARING IS THESE TWO FOUND MONUMENTS AND IS BASED ON A SURVEY PERFORMED BY WILLIAM R. WELLS IN 1998 FOR UMATILLA COUNTY (SEE SURVEY NO. 98-101-C). THE MEASURED HORIZONTAL DISTANCE BETWEEN THESE TWO MONUMENTS IS 2854.80 FEET. USING SINGLE PROPORTIONATE MEASUREMENTS I CALCULATED THE CENTER-EAST-NORTHEAST 1/64 CORNER (SAID INITIAL POINT) AT 664.20 FEET FROM SAID NORTHEAST CORNER AND ON LINE BETWEEN THE NORTHEAST CORNER AND THE NORTH 1/4 CORNER BOTH OF SECTION 19.

THIS SURVEY WAS ACCOMPLISHED USING A TOPCON GTS-303D 5 SECOND TOTAL STATION AS WELL AS THE TOPCON HYPER OPS SYSTEM WITH A LEGACY H RECEIVER. AN AUTONOMOUS POSITION WAS GENERATED ON THE BASE UNIT AND THE NORTHEAST CORNER AND THE NORTH 1/4 CORNER BOTH OF SECTION 19 WERE SUBSEQUENTLY USED FOR LOCALIZING THE SYSTEM. ALL CORNERS WERE THEN LOCATED AND OR SET ON A 10 SECOND EPOCH ON A FIXED SOLUTION.

SURVEYOR'S CERTIFICATION

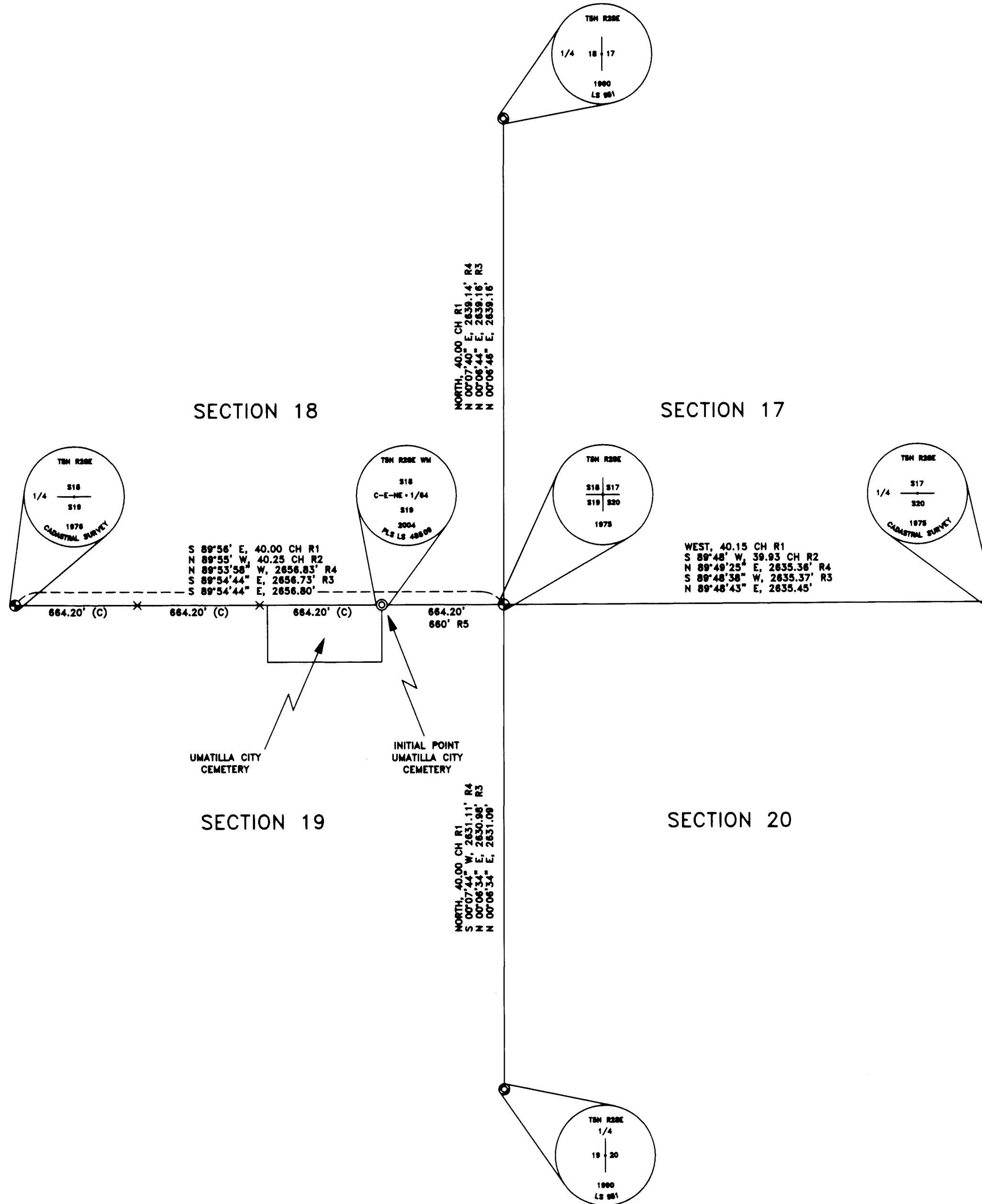
I, BRIT L. PRIMM, A PROFESSIONAL LAND SURVEYOR IN THE STATE OF OREGON HEREBY CERTIFY THAT THIS MAP CORRECTLY REPRESENTS A SURVEY CONDUCTED UNDER MY DIRECT SUPERVISION IN JULY 2004, IN CONFORMANCE WITH THE REQUIREMENTS OF THE SURVEY RECORDING LAW, AS ESTABLISHED BY ORS CHAPTER 92. AND HAVE SET THE PROPER MONUMENTS.

REGISTERED
 PROFESSIONAL
 LAND SURVEYOR

Brit L. Primm
 OREGON
 JULY 13, 1999
 BRIT L. PRIMM
 48509

EXPIRATION DATE: 12/31/04

DATE AUG 18/04



PRIMM LAND SURVEYING LLC



CLIENT: UMATILLA COUNTY	
NE 1/4 OF SEC. 19, TWP. 5 N, RNG. 28 E., OF THE W.M.	
PROJECT:	JOB#: 0401001
MONUMENT C-E-NE 1/64 SECTION 19	DATE: 7/20/04
TOWNSHIP 5 NORTH, RANGE 28 EAST	FB/PG: 013/41
OF THE W.M.	SHEET: 1 OF 1
	DRAWN BY: KPP
	APPROVED: BLP

RECEIVED BY
 Umatilla County Surveyor

Date 8-04
 Rec'd By KK
 No. 04-158-B

04-158-B