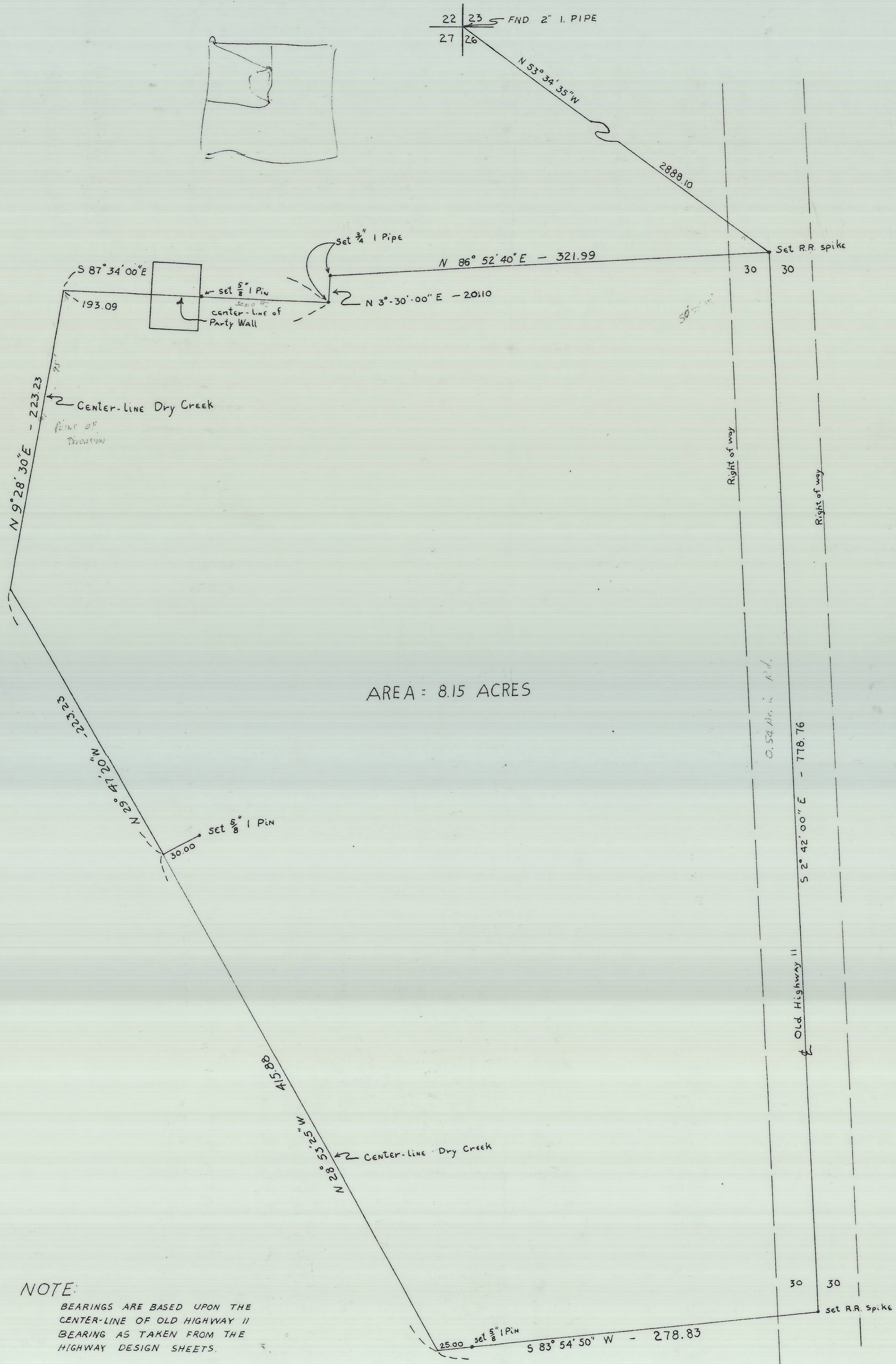
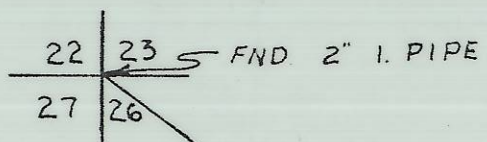
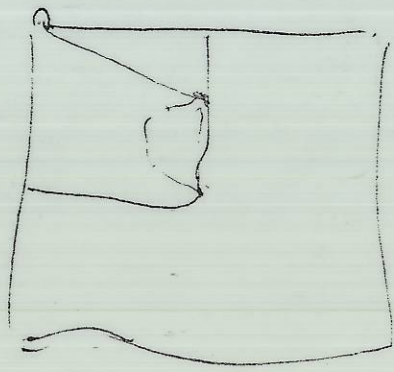


T. 5N., R. 35 E.

RECEIVED BY
Ozark County Surveyor
Date 6-9-72
Rec'd By AK
No. 01-97-B



AREA = 8.15 ACRES

NOTE:

BEARINGS ARE BASED UPON THE CENTER-LINE OF OLD HIGHWAY II BEARING AS TAKEN FROM THE HIGHWAY DESIGN SHEETS.

David H. Kumbler

WAYNE HARRIS CO. INC.			
SURVEY FOR LOWELL STEEN PARCEL IN SEC. 26 T. 5N., R. 35 E W. M.			
SCALE	DATE	DRN. BY	DRNG. NO
1" = 50'	7/7/72	DWB	72-298-C