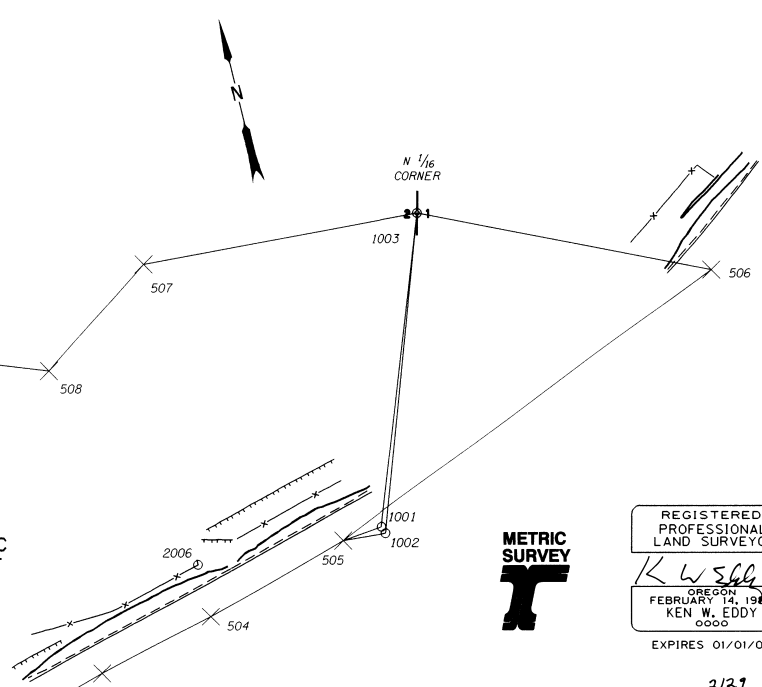


SEC. 1,2,3 T.1 N. R.34 E. W .M.

PT	NORTHING	EASTING	DESCRIPTION
2	216164.002	2652849.423	FD 3 1/2 IN TRIANGULATION STATION DISK MARKED BIG HILL AZIMUTH
3	216639.503	2653456.009	FD 3 1/2 IN TRIANGULATION DISK MARKED BIG HILL RESET 1963
39	215929.175	2652820.340	FD 5/8 IN PIN WITH ALUMINUM CAP MARKED TRAV 39 FROM 96-113-C
1000	215538.597	2652017.089	FD 2 3/4 IN OSHD BRASS DISK MARKED RPPOT 979+67.86 124.67 RT
1001	216154.864	2654305.665	FD 2 3/4 IN OSHD BRASS DISK MARKED RPPS 1057+45.93 125.04 RT
1002	216145.040	2654308.983	FD 2 3/4 IN OSHD BRASS DISK MARKED WITH A CROSS
1003	216553.814	2654453.510	FD 2 3/4 IN INDIAN ALLOTMENT BRASS CAP N 1/16 CORNER S2 1 S1 T1N R34E
2001	215718.922	2652294.429	FD IRON PIN WITH OREGON STATE HWY. DIV. CAP
2002	215748.314	2652444.367	FD IRON PIN
2003	215772.102	2652532.683	FD IRON PIN WITH OREGON STATE HWY. DIV. CAP
2004	215945.066	2653234.711	FD IRON PIN, BENT, FENCE CORNER
2005	216038.549	2653581.506	FD IRON PIN SET IN CONCRETE
2006	216165.584	2654052.795	FD IRON PIN
500	215678.024	2652479.308	SET PK NAIL
501	215809.409	2652983.043	SET PK NAIL
502	215915.788	2653414.312	SET HUB AND TACK
503	216052.851	2653891.830	SET HUB AND TACK
504	216092.290	2654052.864	SET HUB AND TACK
505	216149.481	2654250.829	SET HUB AND TACK
506	216386.030	2654819.250	SET HUB AND TACK
507	216577.180	2654078.875	SET HUB AND TACK
508	216466.467	2653919.791	SET HUB AND TACK

AT	TO	GEODETTIC DISTANCE	BEARING
2	3	770.745	N51°54'26"E
3	39	953.227	S41°49'31"W
39	1000	893.176	S64°04'08"W
1000	500	482.790	N73°12'51"E
500	501	520.587	N75°22'54"E
501	502	444.195	N76°08'37"E
502	503	496.799	N73°59'05"E
503	504	165.846	N76°14'19"E
504	505	206.061	N73°53'11"E
505	506	615.677	N67°24'19"E
506	1003	402.389	N65°21'24"W
1003	507	375.363	N86°25'52"W
507	508	193.817	S55°09'52"W
508	3	495.010	N69°32'22"W
505	1001	55.100	N84°23'37"E
505	1002	58.323	S85°37'59"E
1003	1002	443.571	S19°28'18"W
1003	1001	425.464	S20°20'02"W

BASIS OF BEARING AND CONTROL TRAVERSE SCHEMATIC
NOT TO SCALE



REGISTERED PROFESSIONAL LAND SURVEYOR
KEN W. EDDY
OREGON FEBRUARY 14, 1985
0000
EXPIRES 01/01/00



NARRATIVE

THE PURPOSE OF THIS SURVEY IS TO ESTABLISH A TRAVERSE AND MAP FOR THE WAYSIDE ROCKFALL PROJECT ALONG THE OLD OREGON TRAIL HIGHWAY FROM MILEPOST 227.02 TO MILEPOST 228.66. THE SURVEY CREW CONSISTED OF BRENT REYNOLDS, AND JOEL ESTRADA. THE CREW STARTED THE FIELDWORK ON SEPTEMBER 27, 2000 AND COMPLETED IT ON OCTOBER 18, 2000. THIS SURVEY TOOK PLACE IN TOWNSHIP 1 NORTH; RANGE 34 EAST; SECTION 1, 2, 3.

TRAVERSE POINT 2 IS A FOUND 3 1/2 IN TRIANGULATION STATION DISK; STAMPED BIG HILL AZMUTH MARK WITH AN ARROW POINTING TO BIG HILL RESET. TRAVERSE POINT 3 IS A FOUND 3 1/2 IN TRIANGULATION STATION DISK STAMPED BIG HILL RESET, 1963. TRAVERSE POINT 39 IS AN ODOT 5/8 IN PIN WITH ALUMINUM CAP; STAMPED TRAV.39 FROM ODOT SURVEY UMATILLA COUNTY SURVEY 96-113-C. TRAVERSE POINT 1000 IS A FOUND 2 3/4 IN STATE HIGHWAY DEPARTMENT BRASS DISK; STAMPED R.P.P.O.T. 979+67.8, 124.67 RT. TRAVERSE POINTS 500 AND 501 ARE PK NAILS SET FOR THIS PROJECT. TRAVERSE POINTS 502 - 508 ARE HUB AND TACK SET FOR THE PROJECT. POINT 1001 IS A FOUND 2 3/4 IN STATE HIGHWAY DEPARTMENT BRASS DISK; STAMPED R.P.P.S. 1057+45.93, 125.04 RT. POINT 1002 IS A FOUND 2 3/4 IN STATE HIGHWAY DEPARTMENT BRASS DISK; MARKED WITH CROSS (NO STATION OR OFFSET). TRAVERSE POINT 1003 IS A FOUND 2 3/4 IN INDIAN ALLOTMENT BRASS CAP, N 1/16 CORNER SECTION 2; T1N;R34E; MARKED S 2, S 1, 11, 16 1/16 1919. THE CAP IS VERY ROUGH AND WORN AND SHOULD INDICATE THAT THIS IS THE N 1/16 CORNER OF SECTION 2 :1. POINTS 2001 - 2006 WERE SINGLE TIED AND NOT USED FOR TRAVERSE CONTROL OR BASIS OF BEARING.

THIS SURVEY USED NGS BIG HILL RESET AND BIG HILL AZ MARK FOR THE BASIS OF BEARING (GRID). THE STATE PLANE COORDINATES WERE CONVERTED TO LOCAL DATUM PLANE BY USING THE SCALE FACTOR OF 0.99992282 ON THE COORDINATES FOR BIG HILL RESET. THE TRAVERSE WAS ADJUSTED BY THE COMPASS RULE, THE CLOSURE IS 1:127,583.

THE VERTICAL DATUM FOR THIS PROJECT WAS ASSUMED ELEVATION OF 100 METERS AT MAPPING POINT 500. THE DATA WAS OBTAINED, EDITED AND CONVERTED TO A TERRAIN MODEL BY LISCAD (4.1). THE EQUIPMENT USED ON THIS PROJECT WAS A TCA 1800 (98-TSIO).

LEGEND	
○	FOUND MONUMENT
⊙	FOUND 1/16 CORNER
☆	FOUND TRIANGULATION STATION
◆	SET PK NAIL
⊗	SET HUB AND TACK
—x—	FENCE
- - - - -	SNOW FENCE
- - - - -	EDGE OF PAVEMENT
—	FOG LINE
—	TRAVERSE LINE

TO CONVERT METERS TO FEET DIVIDE BY 0.3048

OREGON DEPARTMENT OF TRANSPORTATION

RECOVERY SURVEY MAP
I-84 WAYSIDE ROCKFALL SECTION

OLD OREGON TRAIL
UMATILLA COUNTY

RECEIVED BY
Umatilla County Survey
Date: 6-01
Rec'd by: KE
No. 01-89-B