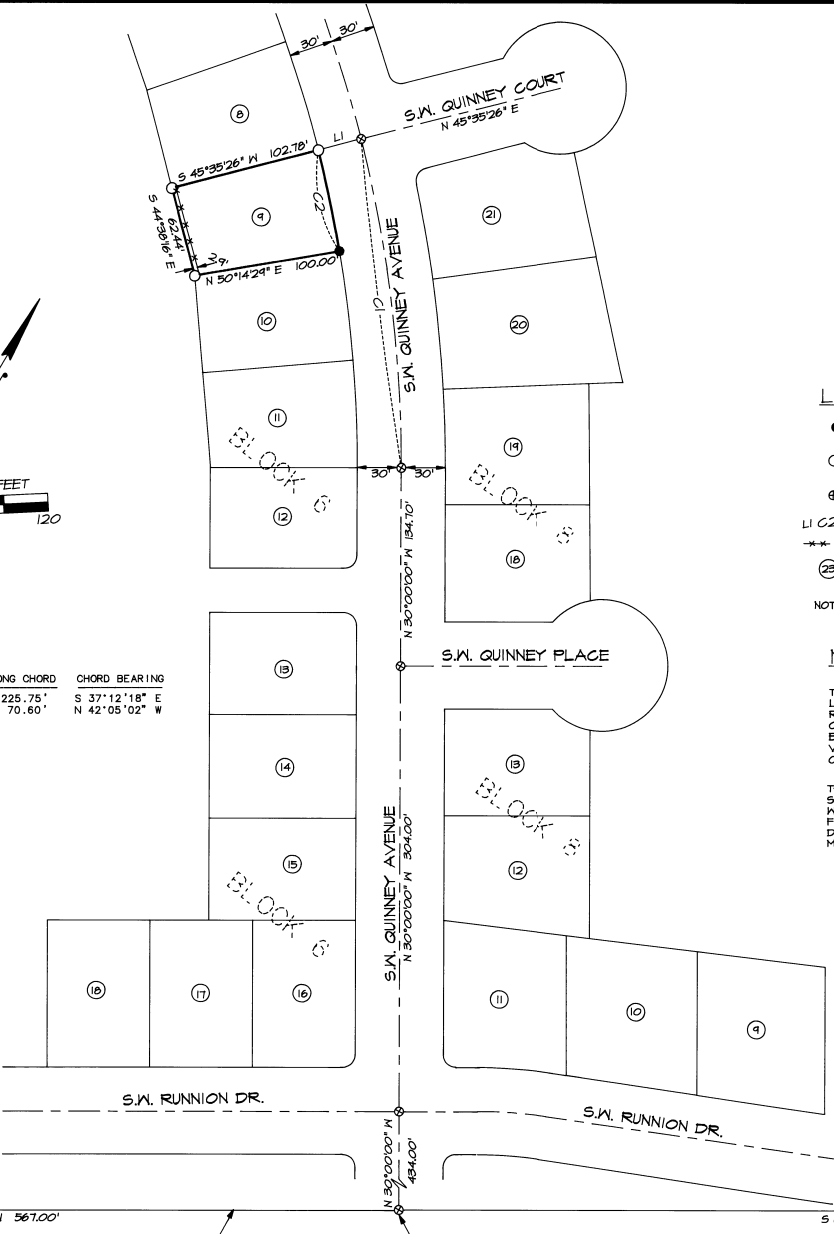


LINE NO.	BEARING	DISTANCE
L1	N 45°35'26" E	30.00'

CURVE NO.	DELTA	RADIUS	LENGTH	LONG CHORD	CHORD BEARING
C1	14°24'35"	900.00'	226.35'	225.75'	S 37°12'18" E
C2	4°39'03"	870.00'	70.82'	70.80'	N 42°05'02" W



LEGEND

- - SET A 5/16" X 30" IRON PIN WITH 1 1/2" YELLOW PLASTIC CAP MARKED 'OR PLS 1639'.
- - FOUND 1/2" OR 5/8" IRON ROD PLAT MONUMENT FROM RICE ADDITION PLAT.
- ⊕ - CALCULATED POINT ONLY, NOT SET OR FOUND.
- L1 C2 - LINE OR CURVE NUMBER, SEE LINE TABLE OR CURVE TABLE FOR ANNOTATION.
- - EXISTING FENCELINE
- Ⓢ - LOT NUMBER, RICE ADDITION PLAT.

NOTE: UNLESS OTHERWISE SHOWN, MEASURED DIMENSIONS ARE IDENTICAL TO THOSE SHOWN ON THE RICE ADDITION PLAT.

NARRATIVE OF SURVEY

THIS SURVEY WAS MADE AT THE REQUEST OF KEITH MAY TO LOCATE AND MONUMENT THE BOUNDARY OF LOT 9, BLOCK 8, RICE ADDITION TO PENDLETON, OREGON. MISSING S.E. LOT CORNER WAS LAID OUT FROM FOUND MONUMENTS USING RECORD BEARINGS AND DISTANCE FROM PLAT. FOUND CORNERS WERE VERIFIED BY MEASUREMENT TO FOUND PLAT PERIMETER MONUMENTS ON THE SOUTHERLY LINE OF THE PLAT.

THIS SURVEY WAS MADE WITH A 2 PERSON CREW USING A SOKKIA SET 4 B AUTOMATIC FIVE SECOND TOTAL STATION. THE SURVEY WAS MADE BY A COMBINATION OF CLOSED TRAVERSE AND OPEN FIELD TRAVERSE WITH RADIALITIES, WITH ANGLES AND DISTANCES DOUBLED WHEN MEASURING TO CONTROLLING CORNERS AND SETTING MONUMENTS.

SOUTHWEST CORNER OF LOT 22, BLOCK 7, RICE ADDITION

SOUTHEAST CORNER OF BLOCK 10, RICE ADDITION

SOUTHERN BOUNDARY OF RICE ADDITION
BASIS OF BEARINGS

REGISTERED PROFESSIONAL LAND SURVEYOR

William L. Hanley

OREGON
JULY 14, 1978
WILLIAM L. HANLEY
1639
RENEWS 6/30/97

RECEIVED BY
 Unattested County Surveyor
 Date: 5-96
 Rec'd: KK
 No. 96-87-B

WILLIAM R. WELLS, PLS
 357 N.E. HWY. 11
 P.O. BOX 1696
 PENDLETON, OR 97801
 PHONE: (541) 276-6362

DATE: 5/2/96 DR. BY: DMT
 CK. BY: WRW NO: 46-303

PROJECT:
 SURVEY FOR:
 KEITH MAY

LOT 9, BLOCK 8, RICE ADDITION
 TO PENDLETON, OREGON
 SOUTHWEST 1/4, SECTION 15,
 TOWNSHIP 2 NORTH, RANGE 32 EAST, 11M,
 UMATILLA COUNTY, OREGON.