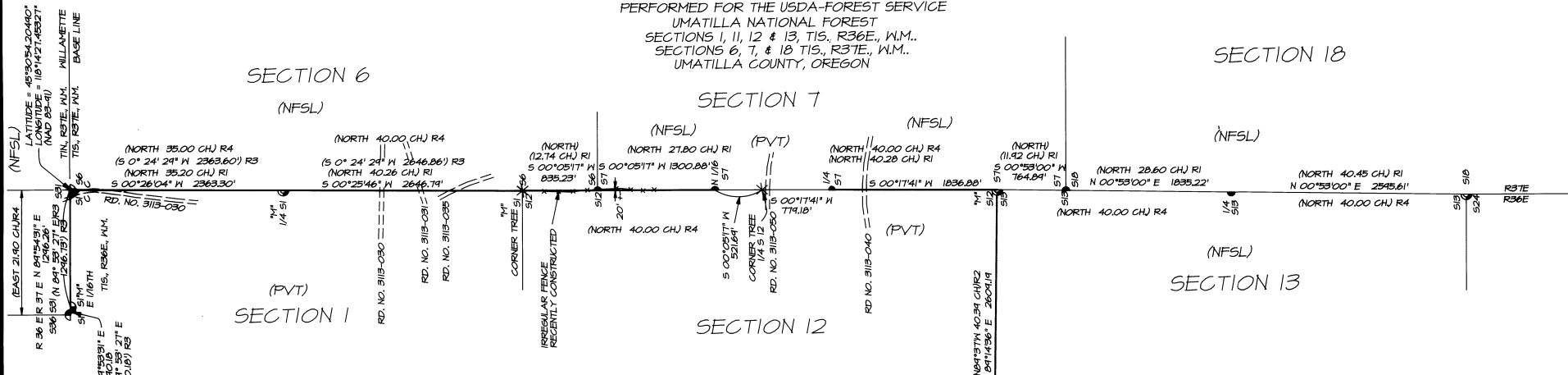


RECORD OF SURVEY PLAT
WILBUR 1994 CADASTRAL SURVEY
CONTRACT NO. 53-04R3-4-13
PERFORMED FOR THE USDA-FOREST SERVICE
UMATILLA NATIONAL FOREST
SECTIONS 1, 11, 12 & 13, T15, R36E., W.M.
SECTIONS 6, 7, & 18 T15, R37E., W.M.
UMATILLA COUNTY, OREGON



LEGEND

- * - INDICATES CORNER TREE MONUMENT
- ⊙ - FOUND A 3" BRASS CAP ON A 2" GALVANIZED IRON PIPE BY PLS #840, 1472, CERTIFIED LAND RECORD NOS H-150-R, H-151-R, H-152-R, H-154-R, H-156-R, AND H-158-R.
- ⊙ - FOUND A 2 1/2" ALUMINUM CAP ON A 2 1/2" ALUMINUM PIPE BY BAGETT GRIFFITH & ASSOCIATES, PLS # 644, MAP OF SURVEY NO. 84-101-B.
- ⊙ - FOUND ACCEPTABLE ORIGINAL CORNER EVIDENCE AND REMONUMENTED WITH A 2 1/2" ALUMINUM CAP ON 2-1/2" X 30" ALUMINUM PIPE. SEE CORNER RECORD FILED SEPARATELY.
- ⊙ - CORNER ESTABLISHED BY SURVEY. MONUMENTED WITH A 2-1/2" ALUMINUM CAP ON A 2 1/2" X 30" ALUMINUM PIPE. SEE CORNER RECORD FILED SEPARATELY.
- "M" - INDICATES EXISTING MONUMENT WAS MAINTAINED UNDER THIS CONTRACT.
- - NATIONAL FOREST BOUNDARY POSTED ON THIS SURVEY WITH 6" STEEL OR WOOD FENCE POSTS WITH SIGNS 54-2 ATTACHED.
- (XOX)R1 - RECORD REPORTED ON CONTRACT NO. 450, BY HENRY MELDRUM, U.S. DEPUTY SURVEYOR, DATED JUNE 11, 1882.
- (XOX)R2 - RECORD REPORTED ON CONTRACT NO. 452, BY HERMAN L. GRADON, U.S. DEPUTY SURVEYOR, DATED JUNE 16, 1882.
- (XOX)R3 - RECORD REPORTED ON MAP OF SURVEY NO.84-101-B, BY BAGETT-GRIFFITH AND ASSOC. UNDER CONTRACT TO THE U.S.F.S. DATED 10/10/84.
- (XOX)R4 - RECORD REPORTED ON CONTRACT NO. 347 BY JACOB C. COOPER, U.S. DEPUTY SURVEYOR, DATED JULY 1, 1881.
- == - ROADS.
- (PVT) - INDICATES PRIVATE LAND.
- (NFSL) - INDICATES NATIONAL FOREST SYSTEM LANDS.



SURVEYOR'S CERTIFICATE

I, WILLIAM R. WELLS, A REGISTERED PROFESSIONAL LAND SURVEYOR IN THE STATE OF OREGON, DO HEREBY CERTIFY THAT THIS PLAT, AND THE CORNER RECORDS FILED SEPARATELY, ARE A CORRECT REPRESENTATION OF A SURVEY PERFORMED BY ME DURING THE MONTHS OF JULY-OCTOBER, 1994, AT THE REQUEST OF THE USDA, FOREST SERVICE, AND IN CONFORMANCE WITH MY CONTRACT.

**REGISTERED
PROFESSIONAL
LAND SURVEYOR**

Will. R. Wells

OREGON
JULY 22, 1977
WILLIAM R. WELLS
1188
RENEWS 12/31/94

Will. R. Wells
 WILLIAM R. WELLS, PLS
 OREGON LICENSE NO. 1106

EXAMINED AND ACCEPTED FOR THE U.S. FOREST SERVICE THIS 30TH

DAY OF November, 1994.
Dennis T. Claydon COR.

I CERTIFY THAT THIS SURVEY WAS PERFORMED AT THE REQUEST OF THE UMATILLA NATIONAL FOREST.
John P. Klein 11/30/94
 NATIONAL FOREST SUPERVISOR DATE

NARRATIVE OF SURVEY

THIS SURVEY WAS PERFORMED AT THE REQUEST OF THE UMATILLA NATIONAL FOREST, UNDER CONTRACT NO. 53-04R3-4-13. THE PURPOSE OF THE SURVEY WAS TO SURVEY, MONUMENT AND MARK THE BOUNDARY BETWEEN PRIVATE AND NATIONAL FOREST SYSTEM LANDS.

HORIZONTAL CONTROL FOR THE RANGE LINE BETWEEN THE NORTHEAST CORNER OF SECTION 1 AND THE SOUTHWEST CORNER OF SECTION 13, T15, R36E., W.M. WAS FIXED BY GPS OBSERVATIONS MADE AS PART OF A GPS SURVEY CONSTRAINED TO HIGH PRECISION STATIONS 'BIG HILL RESET', 'FORE' AND 'COVE'. A GROUND SURVEY TRAVERSE WAS RUN BETWEEN GPS CONTROL POINTS ALONG THE RANGE LINE AND CLOSED INTO POSITIONS GENERATED BY GPS. THE POSTING LINE BETWEEN THE SOUTHWEST CORNER OF SECTION 12 AND THE SOUTH 1/4 CORNER OF SECTION 11 WAS RUN BY CONVENTIONAL SURVEY WITH ANGLES WITH A BEARING CHECK PROVIDED BY SOLAR OBSERVATION WEST OF THE SOUTH 1/4 CORNER OF SECTION 11. THE POSTING LINE BETWEEN THE NORTHEAST CORNER OF SECTION 1 AND THE EAST 1/8TH CORNER OF SECTION 1 WAS RUN BY GROUND CONTROL TRAVERSE AND VERIFIED BY COMPARISON TO THE 1941 BAGETT-GRIFFITH SURVEY RECORD AND BY RETURNING ANGLES IN THE OPPOSITE DIRECTION TO THE GROUND TRAVERSE RUN.

GROUND SURVEY TRAVERSE MEASUREMENTS WERE MADE WITH A SOKKIA SET 3B AUTOMATIC TOTAL STATION WITH STANDARD ERRORS OF PLUS OR MINUS 3 SECONDS ANGULAR, AND 5MM PLUS OR MINUS 3 PARTS PER MILLION TIMES DISTANCE FOR LINEAR MEASUREMENT. SURVEY OBSERVATIONS WERE BOOKED IN A STANDARD FIELD BOOK OR GATHERED WITH A SOKKIA SDR 33 OR LEITZ SDR 22 ELECTRONIC FIELD BOOK. TRAVERSES CLOSING ON GPS CONTROL WERE ADJUSTED BY LEAST SQUARES METHODS. OFFSETS TO POSTING LINE WERE MADE WITH A HAND COMPASS AND STEEL TAPE FROM TRAVERSE CONTROL AND POSTING POINTS. GPS OBSERVATIONS WERE MADE WITH 3 ASITECH P-12 DUAL FREQUENCY RECEIVERS WITH FIXED HEIGHT ANTENNA TRIPODS. GPS DATA WAS PROCESSED AND ADJUSTED BY LEAST SQUARES METHODS ON ASHTECH FILLNET PROCESSING SOFTWARE.

BEARINGS ARE GEODETIC BASED ON THE CONVERGENCE ANGLE OF 0°13'11" DETERMINED BY GPS OBSERVATION AT A POINT LOCATED NORTH 1°26'16" EAST, 112.40 FEET FROM THE SOUTHWEST CORNER OF SECTION 12, T15, R36E., W.M. DISTANCES BETWEEN FIXED GPS OBSERVATION POINTS WERE CONVERTED TO GROUND DISTANCES USING A COMBINED ELEVATION AND SCALE FACTOR OF 1.00029045. AVERAGE PROJECT ELEVATION DATUM 4200 FEET.

THE EAST 1/4 CORNER OF SECTION 1, T15, R36E., W.M. AND THE NORTHWEST AND SOUTHWEST CORNERS OF SECTION 7, T15, R37E., W.M. WERE DECLARED LOST AFTER DILIGENT SEARCH AND WERE RE-ESTABLISHED ON THE EAST LINE OF SECTIONS 12 AND 13, T15, R36E., W.M. (SENIOR LINE AS DETERMINED BY THE JACOB COOPER SURVEY). THE HENRY MELDRUM SURVEY RECORD WAS USED FOR DISTANCE PROPORTIONING POSITIONS OF RE-ESTABLISHED CORNERS ON THE SENIOR LINE.

HISTORY OF SURVEYS

TIMOTHY W. DAVENPORT, U.S. DEPUTY SURVEYOR, ORIGINALLY SURVEYED THE BASELINE THROUGH RANGES 36 EAST AND 37 EAST UNDER CONTRACT NO. 102 DATED JULY 20, 1863. HERMAN GRADON, U.S. DEPUTY SURVEYOR, RESURVEYED THE BASELINE THROUGH RANGES 36 EAST AND 37 EAST UNDER CONTRACT NO. 452, DATED JUNE 16, 1882, AND SET NEW CORNERS SUPERCEDING DAVENPORT'S CORNERS.

JACOB COOPER, DEPUTY SURVEYOR, ORIGINALLY SURVEYED THE EAST LINE OF T15, R36E., W.M. UNDER GLO CONTRACT NO. 347, DATED JULY 1, 1881.

HENRY MELDRUM, DEPUTY SURVEYOR, RESURVEYED THE WEST LINE OF T15, R37E., W.M. UNDER CONTRACT NO. 450, DATED JUNE 11, 1882. MELDRUM ESTABLISHED NEW CORNERS APPLICABLE TO T15, R37E., W.M. ONLY.

HERMAN GRADON, DEPUTY SURVEYOR, SUBDIVIDED T15, R36E., W.M. UNDER CONTRACT NO. 452, DATED JUNE 16, 1882.

BAGETT-GRIFFITH ASSOCIATES SUBDIVIDED SECTION 1, T15, R36E., W.M. UNDER CONTRACT TO THE U.S. FOREST SERVICE, PER MAP OF SURVEY NO. 84-101-B, DATED OCTOBER 10, 1984.

DOUGLAS M. FERGUSON, REMONUMENTED CERTAIN CORNERS IN THIS AREA UNDER CONTRACT TO THE U.S. FOREST SERVICE, AS SHOWN ON LAND RECORD NUMBERS H-150-R, H-151-R, H-152-R, H-154-R, H-156-R, AND H-158-R, UMATILLA COUNTY SURVEYOR RECORDS.

WILLIAM R. WELLS, PLS 351 N.E. HWY. 11 P.O. BOX 1696 PENDLETON, OR 97801 PHONE: (503) 276-6362		PROJECT: WILBUR 1994 CADASTRAL SURVEY CONTRACT NO. 53-04R3-4-13	
DATE: 9/1/94	DR. BY: DMT	DATE: 12-94	DR. BY: KK
CK. BY: WRW	NO: 94-253	NO: 94-170-B	

VBRPROP