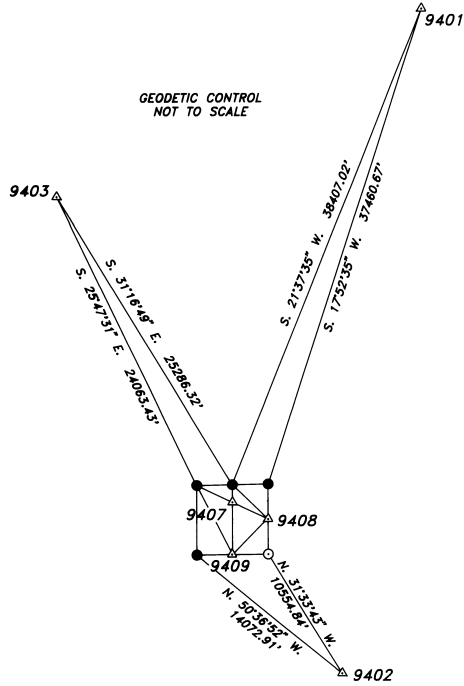


**SURVEY FOR
UMATILLA NATIONAL FOREST
OF
SECTION 20
TOWNSHIP 6 SOUTH, RANGE 31 EAST,
WILLAMETTE MERIDIAN
UMATILLA COUNTY, OREGON
JULY 6 - SEPTEMBER 15, 1994**



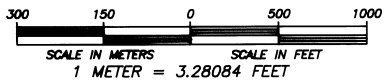
GEODETIC CONTROL
NOT TO SCALE



LEGEND

- MONUMENT FOUND
- MONUMENT SET
- △ GPS CONTROL POINT
- () RECORD MEASUREMENT (RUFUS S. MOORE, 1881)
- MARKED BOUNDARY
- OLD FENCE

SCALE: 1 INCH = 500



I, DENNIS L. GAYLORD, A REGISTERED LAND SURVEYOR IN THE STATE OF OREGON, HEREBY CERTIFY THAT THIS PLAT AND THE NOTES HEREON ARE A TRUE AND CORRECT REPRESENTATION OF A SURVEY I CONDUCTED FROM JULY 6 THROUGH SEPTEMBER 15 OF 1994, AT THE REQUEST OF THE UMATILLA NATIONAL FOREST, IN ACCORDANCE WITH THE STATUTES OF OREGON AND THE 1973 B.L.M. MANUAL OF SURVEYING INSTRUCTIONS.

DENNIS L. GAYLORD -- PLS 1636
UMATILLA NATIONAL FOREST
2517 S.W. HALEY AVENUE
PENDLETON, OREGON 97801
PHONE: (503) 278-3748

**REGISTERED
PROFESSIONAL
LAND SURVEYOR**

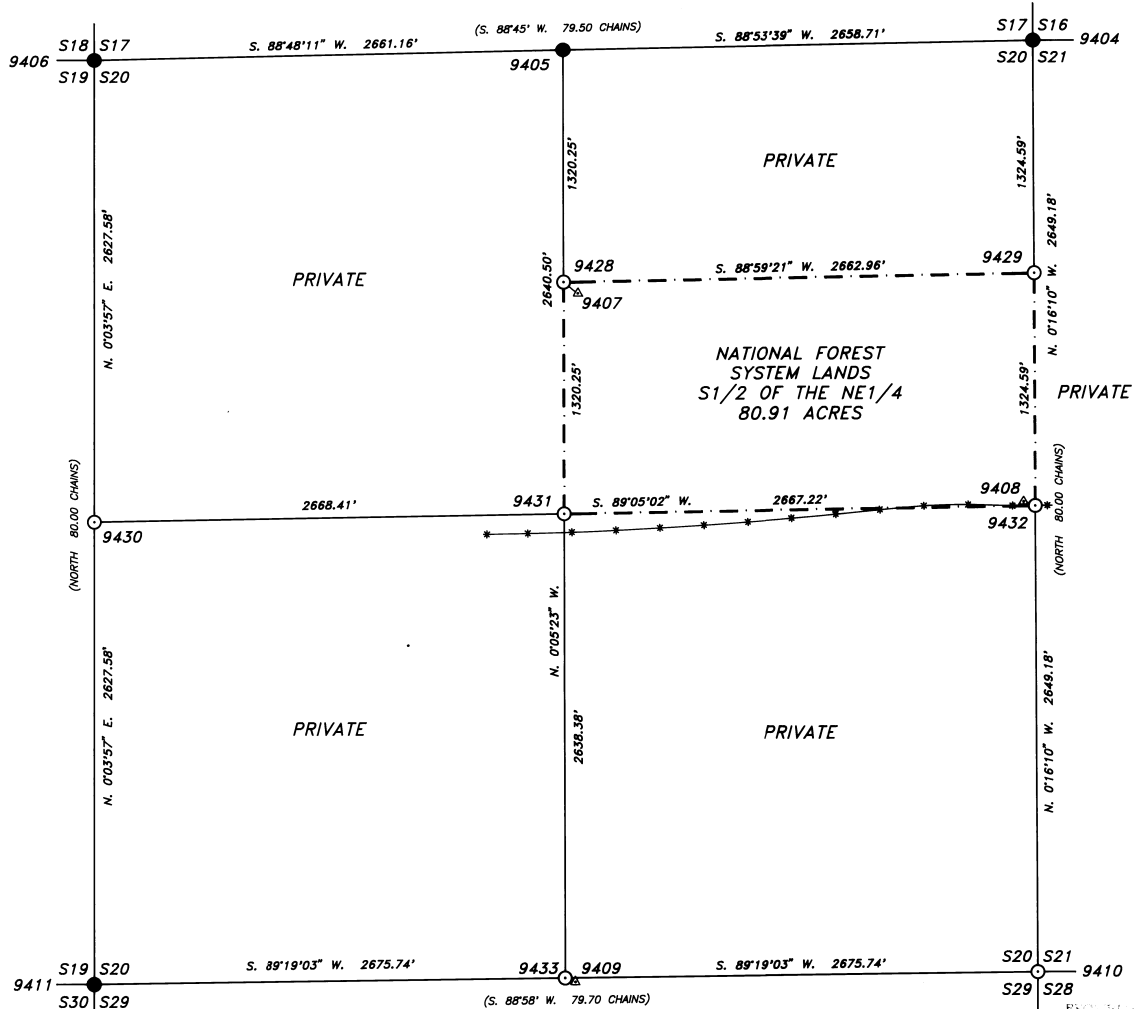
Dennis L. Gaylord

OREGON
JULY 14, 1978
DENNIS L. GAYLORD
1636
RENEWS 06/30/95

REVIEWED BY:
David A. Schmitt 9/27/94
SIGNATURE DATE

I CERTIFY THAT THIS SURVEY WAS PERFORMED AT THE
REQUEST OF THE UMATILLA NATIONAL FOREST SUPERVISOR
John W. Edwards 9/27/94
SIGNATURE DATE

NOTE: MEASUREMENTS SHOWN HEREON ARE FROM THE BUREAU OF LAND MANAGEMENT'S CMM SOFTWARE PROGRAM (VERSION 1.3) AND ARE COMPUTED MEAN GEODETIC BEARINGS AND DISTANCES USING A MEAN PROJECT ELEVATION OF 3950 FEET.



RECEIVED BY
Umatilla
Date 9-94
Rec'd By *KK*
No. 94-124-B

**SURVEY FOR
UMATILLA NATIONAL FOREST
OF
SECTION 20
TOWNSHIP 6 SOUTH, RANGE 31 EAST,
WILLAMETTE MERIDIAN
UMATILLA COUNTY, OREGON
JULY 6 - SEPTEMBER 15, 1994**

NARRATIVE:

PURPOSE:
THE PURPOSE OF THIS SURVEY WAS TO MONUMENT AND MARK THE BOUNDARY BETWEEN PRIVATE AND NATIONAL FOREST SYSTEM LANDS.

DATUM: NAD83(1991) OREGON HIGH PRECISION GPS NETWORK
STATE PLANE COORDINATES: OREGON NORTH ZONE (meters)

HISTORY:

1881, RUFUS S. MOORE, U.S. DEPUTY SURVEYOR, SUBDIVIDED THE TOWNSHIP UNDER GENERAL LAND OFFICE CONTRACT NUMBER 382.

1994, DENNIS L. GAYLORD, REGISTERED LAND SURVEYOR NUMBER 1636, REMONUMENTED THE CORNER OF SECTIONS 16, 17, 20 & 21, THE CORNER OF SECTIONS 17, 18, 19 & 20, THE CORNER OF SECTIONS 19, 20, 29 & 30, AND THE 1/4 CORNER OF SECTIONS 17 & 20 FROM ORIGINAL EVIDENCE.

PROCEDURES:

THIS SURVEY WAS CONDUCTED IN TWO PHASES. A GPS PHASE WHICH PROVIDED GEODETIC CONTROL FOR THE PROJECT AND A CONVENTIONAL SURVEY PHASE WHICH MONUMENTED AND MARKED THE BOUNDARY LINES.

THE GPS PHASE OF THE SURVEY WAS CONDUCTED USING FEDERAL GEODETIC CONTROL COMMITTEE (FGCC) ORDER C, SECOND ORDER, CLASS 1 GPS SURVEY SPECIFICATIONS. ALL COORDINATES PROVIDED ARE NAD83(1991) VALUES BASED ON THE OREGON HIGH PRECISION GPS CONTROL NETWORK.

THE EQUIPMENT USED WAS THREE TRIMBLE 4000SS, DUAL FREQUENCY, RECEIVERS WITH EXTERNAL L1 & L2 GEODETIC ANTENNAS, NIKON TRIBACHS, AND STANDARD SURVEY TRIPODS. THE ANTENNA HEIGHTS WERE MEASURED USING WILD'S HEIGHT HOOK SYSTEM.

FAST STATIC, CARRIER PHASE MEASUREMENTS AND DATA PROCESSING WAS USED ON ALL BASELINE MEASUREMENTS, AND THE BASELINES WERE EVALUATED BY EXAMINATION OF STATISTICAL QUALITY INDICATORS AND LOOP CLOSURE ANALYSIS. THE BASELINES WERE THEN ADJUSTED IN A LEAST SQUARES ADJUSTMENT PROGRAM USING THE THREE EXISTING GPS CONTROL POINTS (9401=FORE 1989, 9402=GPS DALE 01 1992 & 9403=GPS STINKING WATER 1989) AS FIXED CONTROL BOTH HORIZONTALLY AND VERTICALLY (SEE CONTROL SURVEY NUMBER 93-026-B). THESE CONTROL POINTS ALSO PROVIDE THE SURVEY'S BASIS OF BEARING.

THE CONVENTIONAL PHASE OF THE SURVEY WAS CONDUCTED USING A TOPCON GTS-4 TOTAL STATION. THE ANGLES AND DISTANCES MEASURED WERE PROCESSED USING THE BUREAU OF LAND MANAGEMENT'S PC PROGRAM CMM (CADASTRAL SURVEY MEASUREMENT MANAGEMENT SYSTEM). THE MEASUREMENTS WERE THEN ADJUSTED IN CMM USING A LEAST SQUARES ADJUSTMENT. IN ADDITION CMM WAS USED TO COMPUTE THE SUBDIVISION OF THE SECTION, CORNER MOVES, AND POSTING OFFSETS.

DURING THE COURSE OF THIS SURVEY A DILIGENT SEARCH WAS CONDUCTED FOR THE CORNER OF SECTIONS 20, 21, 28 & 29, THE 1/4 CORNER OF SECTIONS 19 & 20, THE 1/4 CORNER OF SECTIONS 20 & 21, AND THE 1/4 CORNER OF SECTIONS 20 & 29.

THE CORNER STONE OF SECTIONS 20, 21, 28 & 29 WAS RECOVERED IN PLACE.

THE CORNER STONE OF THE 1/4 CORNER OF SECTIONS 20 & 21 WAS RECOVERED OUT OF POSITION WIRED TO AN OLD FENCE. AS ALL THE ROCKS IN THE AREA HAD BEEN GATHERED UP AND PLACED IN AN OLD ROCK JACK IT WAS IMPOSSIBLE TO DETERMINE THE ORIGINAL LOCATION OF THE CORNER. THEREFORE I DECLARE THE CORNER TO BE LOST AND RE-ESTABLISH IT BY SINGLE PROPORTION MEASUREMENT.

THE CORNER STONES OF THE 1/4 CORNER OF SECTIONS 19 & 20, AND THE 1/4 CORNER OF SECTIONS 20 & 29 WERE NOT RECOVERED. ALSO DECLARE THESE CORNER TO BE LOST AND RE-ESTABLISH THEM BY SINGLE PROPORTION MEASUREMENT.

THE BEARING TREES AND CORNER REFERENCES WERE TIED USING EITHER THE TOPCON GTS-4 OR A WARREN-KNIGHT SURVEYORS COMPASS. WITH DISTANCE MEASUREMENTS TO THE BEARING TREES BEING TAKEN AT SIDE CENTER ONE FOOT ABOVE THE ROOT CROWN. TREE DIAMETERS WERE MEASURED AT BREAST HEIGHT.

ALL NEW BEARING TREES ARE DOUBLE BLAZED AND HAVE A 3/4 INCH DIAMETER BRASS WASHER STAMPED "PLS 1636" NAILED NEAR THE "BT" SCRIBING ON THE LOWER BLAZE.

THE PROPERTY BOUNDARY WAS MARKED BY SETTING 6 FOOT METAL FENCE POST WITH METAL PROPERTY BOUNDARY SIGNS ATTACHED WITHIN ONE FOOT OF THE PROPERTY BOUNDARY.

FIELD BOOK ONE IS ON FILE AT THE SUPERVISOR'S OFFICE OF THE UMATILLA NATIONAL FOREST LOCATED AT PENDLETON, OREGON.

NO.	NAME	LATITUDE	LONGITUDE	NORTHING (m)	EASTING (m)	ELLIPSOID HEIGHT(m)	CONVERGENCE	SCALE FACTOR
9401	FORE 1989	45°08'15.86357" NORTH	118°57'27.86563" WEST	164628.221	2821290.441	992.552	1°03'37.496"	0.999894728
9402	GPS DALE 01 1992	45°00'02.83235" NORTH	118°58'50.87817" WEST	149375.102	2619763.340	836.836	1°04'38.025"	0.999898859
9403	GPS STINKING WATER 1989	45°05'56.74536" NORTH	119°03'48.02551" WEST	160178.582	2613062.835	1373.687	1°01'07.892"	0.999895318
9404	CORNER OF SECTIONS 16, 17, 20 & 21	45°02'23.91810" NORTH	119°00'08.11187" WEST	153697.655	2617991.535	1196.301	1°03'43.852"	0.999897097
9405	1/4 CORNER OF SECTIONS 17 & 20	45°02'23.41162" NORTH	119°00'45.12389" WEST	153667.080	2617181.975	1236.668	1°03'17.603"	0.999897102
9406	CORNER OF SECTIONS 17, 18, 19 & 20	45°02'22.86289" NORTH	119°01'22.16876" WEST	153635.252	2616371.714	1269.782	1°02'51.332"	0.999897108
9407	GPS BUCKHORN NO. 1 1994	45°02'09.75550" NORTH	119°00'43.96860" WEST	153246.074	2617215.016	1237.072	1°03'18.423"	0.999897253
9408	GPS BUCKHORN NO. 2 1994	45°01'57.90048" NORTH	119°00'08.84741" WEST	152894.409	2617990.326	1204.697	1°03'43.330"	0.999897387
9409	GPS BUCKHORN NO. 3 1994	45°01'31.61452" NORTH	119°00'44.20913" WEST	152052.406	2617231.734	1203.138	1°03'18.252"	0.999897702
9410	CORNER OF SECTIONS 20, 21, 28 & 29	45°01'30.98520" NORTH	119°00'07.76496" WEST	152063.621	2618029.056	1204.636	1°03'44.098"	0.999897696
9428	CN1/16 CORNER OF SECTION 20	45°02'10.37847" NORTH	119°00'45.09514" WEST	152034.180	2616399.152	998.470	1°02'51.272"	0.999897246
9429	N1/16 CORNER OF SECTIONS 20 & 21	45°02'10.84223" NORTH	119°00'08.02514" WEST	153294.147	2618000.915		1°03'43.913"	0.999897240
9430	1/4 CORNER OF SECTIONS 19 & 20	45°01'56.92407" NORTH	119°01'22.21079" WEST	152834.716	2616385.433		1°02'51.302"	0.999897398
9431	1/4 CORNER OF SECTION 20	45°01'57.34530" NORTH	119°00'45.06638" WEST	152862.632	2617198.046		1°03'17.644"	0.999897393
9432	1/4 CORNER OF SECTIONS 20 & 21	45°01'57.76634" NORTH	119°00'07.93841" WEST	152890.638	2616010.295		1°03'43.975"	0.999897398
9433	1/4 CORNER OF SECTIONS 20 & 29	45°01'31.29987" NORTH	119°00'45.00891" WEST	152058.848	2617214.105		1°03'17.685"	0.999897700

NOTE: THE COORDINATES FOR POINTS NUMBER 9428 THROUGH 9433 WERE DETERMINED FROM CONVENTIONAL SURVEY USING POINTS NUMBER 9407, 9408, & 9409 AS CONTROL, WITH A MEAN ELEVATION (ORTHOMETRIC HEIGHT) OF 3950 FEET.

CORNER INFORMATION:

9401
FORE 1989 (T. 5 S., R. 31 E., SECTION 15)

FOUND A 4" DIAMETER BRASS DISK SET IN CONCRETE 2" BELOW GROUND SURFACE, MARKED AS SHOWN.



9402
DALE 01 1992 (T. 6 S., R. 31 E., SECTION 34)

FOUND A 3 1/4" DIAMETER ALUMINUM CAP SET FLUSH WITH THE GROUND, MARKED AS SHOWN.



9403
STINKING WATER 1989 (T. 5 S., R. 30 E., SECTION 26)

FOUND A 3 1/4" DIAMETER ALUMINUM CAP SET FLUSH WITH THE GROUND, MARKED AS SHOWN.



9404
CORNER OF SECTIONS 16, 17, 20 & 21

FOUND A 2 1/2" DIAMETER ALUMINUM PIPE, WITH A 3 1/4" DIAMETER ALUMINUM CAP, PROJECTING 20" OUT OF THE GROUND, SURROUNDED BY A ROCK MOUND 3' FOOT IN DIAMETER BY 1 1/2 FEET HIGH, MARKED AS SHOWN, FROM WHICH:



- 22" PONDEROSA PINE BEARS N. 79° W., 107.2 FEET, SCRIBED "T6S R31E S17" "BT" ON DOUBLE BLAZE.
- 23" PONDEROSA PINE BEARS S. 22° W., 63.6 FEET, SCRIBED "T6S R31E S20" "BT" ON DOUBLE BLAZE.
- 26" PONDEROSA PINE BEARS S. 57° E., 141.7 FEET, SCRIBED "T6S R31E S21" "BT" ON DOUBLE BLAZE.
- 27" PONDEROSA PINE BEARS W. 61° E., 61.8 FEET, SCRIBED "T6S R31E S16" "BT" ON DOUBLE BLAZE.

THE BEARING TREES ALL HAVE A 3/4" DIAMETER BRASS WASHER STAMPED "PLS 1636" NAILED NEAR THE "BT" SCRIBING ON THE LOWER BLAZE.

9405
1/4 CORNER OF SECTIONS 17 & 20

FOUND A 2 1/2" DIAMETER ALUMINUM PIPE, WITH A 3 1/4" DIAMETER ALUMINUM CAP, PROJECTING 24" OUT OF THE GROUND, SURROUNDED BY A ROCK MOUND 3' FOOT IN DIAMETER BY 1 1/2 FEET HIGH, MARKED AS SHOWN, FROM WHICH:



- 19" PONDEROSA PINE BEARS N. 8° W., 94.6 FEET, SCRIBED "1/4 S17" "BT" ON DOUBLE BLAZE.
- 11" PONDEROSA PINE BEARS N. 57 1/2° E., 71.0 FEET, SCRIBED "1/4 S17" "BT" ON DOUBLE BLAZE.
- 12" JUNIPER BEARS S. 12 1/2° E., 78.5 FEET, SCRIBED "1/4 S20" "BT" ON DOUBLE BLAZE.
- 17" PONDEROSA PINE BEARS S. 79° W., 61.8 FEET, SCRIBED "1/4 S20" "BT" ON DOUBLE BLAZE.

THE BEARING TREES ALL HAVE A 3/4" DIAMETER BRASS WASHER STAMPED "PLS 1636" NAILED NEAR THE "BT" SCRIBING ON THE LOWER BLAZE.

9406
CORNER OF SECTIONS 17, 18, 19 & 20

FOUND A 2 1/2" DIAMETER ALUMINUM PIPE, WITH A 3 1/4" DIAMETER ALUMINUM CAP, PROJECTING 4" OUT OF THE GROUND SURROUNDED BY A MOUND OF STONE, MARKED AS SHOWN, FROM WHICH:



- 22" PONDEROSA PINE BEARS S. 62° W., 90.4 FEET, SCRIBED "T6S R31E S19" "BT" ON DOUBLE BLAZE.
- 25" PONDEROSA PINE BEARS N. 87 1/2° E., 144.4 FEET, SCRIBED "T6S R31E S17" "BT" ON DOUBLE BLAZE.
- 19" PONDEROSA PINE BEARS S. 19 1/2° E., 139.1 FEET, SCRIBED "T6S R31E S20" "BT" ON DOUBLE BLAZE.
- 24" PONDEROSA PINE BEARS N. 32 3/4° W., 79.8 FEET, SCRIBED "T6S R31E S18" "BT" ON DOUBLE BLAZE.

THE BEARING TREES ALL HAVE A 3/4" DIAMETER BRASS WASHER STAMPED "PLS 1636" NAILED NEAR THE "BT" SCRIBING ON THE LOWER BLAZE.

9407
BUCKHORN NO 1 1994 (T. 6 S., R. 31 E., SECTION 20)

SET A 5/8" BY 24" REBAR, WITH A 3 1/4" DIAMETER ALUMINUM CAP, FLUSH WITH THE GROUND, MARKED AS SHOWN.



REGISTERED
PROFESSIONAL
LAND SURVEYOR

Dennis L. Gaylord
DENNIS L. GAYLORD
1636
RENEWS 06/30/95

RECEIVED BY

Umatilla County Surveyor

Date 7-9-94

Rec'd by KE

SHEET 2 OF 3 94-124-B

**SURVEY FOR
UMATILLA NATIONAL FOREST
OF
SECTION 20
TOWNSHIP 6 SOUTH, RANGE 31 EAST,
WILLAMETTE MERIDIAN
UMATILLA COUNTY, OREGON
JULY 6 - SEPTEMBER 15, 1994**

CORNER INFORMATION (CONT.)

**9408
BUCKHORN NO 2 1994 (T. 6 S., R. 31 E., SECTION 20)**

SET A 5/8" BY 24" REBAR, WITH A 3 1/4" DIAMETER ALUMINUM CAP, FLUSH WITH THE GROUND, MARKED AS SHOWN.



**9409
BUCKHORN NO 3 1994 (T. 6 S., R. 31 E., SECTION 29)**

SET A 5/8" BY 24" REBAR, WITH A 3 1/4" DIAMETER ALUMINUM CAP, 14" IN THE GROUND AND SURROUNDED BY A SMALL ROCK MOUND 12" IN DIAMETER BY 10" HIGH, MARKED AS SHOWN.



**9410
CORNER OF SECTIONS 20, 21, 28 & 29**

FOUND A BASALT STONE 20" BY 6" BY 6" WITH 2 GROOVES ON THE WEST SIDE. 1 SET IN PLACE OF THE STONE A 2 1/2" DIAMETER BY 30" ALUMINUM PIPE, WITH A 3 1/4" DIAMETER ALUMINUM CAP MARKED AS SHOWN. SET B" IN THE GROUND AND RAISED A MOUND OF STONE 3 FOOT IN DIAMETER BY 1 FOOT HIGH (CORNER STONE WAS PLACED IN THE MOUND OF STONE ON THE NORTH SIDE OF THE NEW MONUMENT), FROM WHICH;



A REFERENCE MONUMENT, A 5/8" BY 24" REBAR WITH 1 1/2" DIAMETER ALUMINUM CAP, SET 18" IN THE GROUND BEARS N. 20 3/4" E., 131.7 FEET, MARKED AS SHOWN.



A REFERENCE MONUMENT, A 5/8" BY 36" REBAR WITH 1 1/2" DIAMETER ALUMINUM CAP, SET 32" IN THE GROUND BEARS S. 46 1/4" E., 83.8 FEET, MARKED AS SHOWN.



22" PONDEROSA PINE BEARS S. 24' W., 237.2 FEET, SCRIBED "T6S R31E S20" BT
14" JUNIPER BEARS N. 47 1/2" W., 300.1 FEET, SCRIBED "T6S R31E S20" BT.

**9411
CORNER OF SECTIONS 19, 20, 29 & 30**

FOUND A 2 1/2" DIAMETER ALUMINUM PIPE, WITH A 3 1/4" DIAMETER ALUMINUM CAP, PROJECTING 12" OUT OF THE GROUND SURROUNDED BY A STONE MOUND, MARKED AS SHOWN, FROM WHICH;



18" PONDEROSA PINE BEARS N. 55 3/4" E., 128.6 FEET, SCRIBED "T6S R31E S20" BT ON DOUBLE BLAZE, WITH 3/4" DIAMETER BRASS WASHER STAMPED "PLS 1636" NAILED TO THE LOWER BLAZE NEAR THE "BT" SCRIBING.
A DOWNED AND DECAYED 22" PONDEROSA PINE WITH SCRIBING VISIBLE. THE ROOT HOLE BEARS S. 35' E., 118.8 FEET (ORIGINAL BT).
15" DOUGLAS FIR BEARS S. 7 1/2" E., 74.7 FEET, SCRIBED "T6S R31E S29" BT ON DOUBLE BLAZE, WITH 3/4" DIAMETER BRASS WASHER STAMPED "PLS 1636" NAILED TO THE LOWER BLAZE NEAR THE "BT" SCRIBING.
12" DOUGLAS FIR BEARS S. 33' W., 62.8 FEET, SCRIBED "T6S R31E S30" BT ON DOUBLE BLAZE, WITH 3/4" DIAMETER BRASS WASHER STAMPED "PLS 1636" NAILED TO THE LOWER BLAZE NEAR THE "BT" SCRIBING.
30" PONDEROSA PINE BEARS N. 40' W., 9.2 FEET, SCRIBING "6S R31E" VISIBLE ON UPPER BLAZE AND WITH A HEALED LOWER BLAZE (ORIGINAL BT).

**9428
CN1/16 CORNER OF SECTION 20**

SET A 2 1/2" DIAMETER BY 30" ALUMINUM PIPE, WITH A 3 1/4" DIAMETER ALUMINUM CAP, 21" IN THE GROUND AND RAISED A MOUND OF STONE 2 FOOT IN DIAMETER BY 1/2 FOOT HIGH. CAP IS MARKED AS SHOWN, FROM WHICH;



21" JUNIPER BEARS N. 41 3/4" E., 256.5 FEET, SCRIBED "CN1/16 S20" BT ON DOUBLE BLAZE.
BUCKHORN NO. 1, A 3 1/4" DIAMETER ALUMINUM CAP SET FLUSH WITH THE GROUND, BEARS S. 52°03' E., 102.60 FEET, STAMPED AS SHOWN PREVIOUSLY (CORNER NUMBER 9407).

**9429
N1/16 CORNER OF SECTIONS 20 & 21**

SET A 2 1/2" DIAMETER BY 30" ALUMINUM PIPE, WITH A 3 1/4" DIAMETER ALUMINUM CAP, 23" IN THE GROUND AND RAISED A MOUND OF STONE 1 1/2 FOOT IN DIAMETER BY 1/2 FOOT HIGH. CAP IS MARKED AS SHOWN, FROM WHICH;



18" PONDEROSA PINE BEARS N. 69 1/2" E., 43.2 FEET, SCRIBED "N1/16 S21" BT ON DOUBLE BLAZE.
11" WESTERN LARCH BEARS S. 5 3/4" W., 85.7 FEET, SCRIBED "N1/16 S20" BT ON DOUBLE BLAZE.

**9430
1/4 CORNER OF SECTIONS 19 & 20**

FINDING NO EVIDENCE OF THE ORIGINAL CORNER. 1 SET BY SINGLE PROPORTION, A 2 1/2" DIAMETER BY 30" ALUMINUM PIPE, WITH 3 1/4" DIAMETER ALUMINUM CAP, 22" IN THE GROUND AND RAISED A MOUND OF STONE 3 FEET IN DIAMETER BY 1 FOOT HIGH. CAP IS MARKED AS SHOWN, FROM WHICH;



25" PONDEROSA PINE BEARS N. 32 1/2" W., 97.9 FEET, SCRIBED "1/4 S19" BT ON DOUBLE BLAZE.
23" JUNIPER BEARS N. 15 1/4" E., 135.5 FEET, SCRIBED "1/4 S20" BT ON DOUBLE BLAZE.
18" PONDEROSA PINE BEARS S. 7 3/4" E., 57.6 FEET, SCRIBED "1/4 S20" BT ON DOUBLE BLAZE.
A REFERENCE MONUMENT, 5/8" BY 24" REBAR, WITH 1 1/2" DIAMETER ALUMINUM CAP, SET 22" IN THE GROUND BEARS S. 84°11' W., 68.78 FEET, MARKED AS SHOWN.



**9431
C1/4 CORNER OF SECTION 20**

SET A 2 1/2" DIAMETER BY 30" ALUMINUM PIPE, WITH A 3 1/4" DIAMETER ALUMINUM CAP, 6" IN THE GROUND AND RAISED A MOUND OF STONE 4 FEET IN DIAMETER BY 2 FEET HIGH. CAP IS MARKED AS SHOWN, FROM WHICH;



16" PONDEROSA PINE BEARS N. 25' E., 87.6 FEET, SCRIBED "C1/4 S20" BT ON DOUBLE BLAZE.
20" PONDEROSA PINE BEARS S. 84 1/2" E., 176.2 FEET, SCRIBED "C1/4 S20" BT ON DOUBLE BLAZE.
18" PONDEROSA PINE BEARS N. 26 1/2" W., 81.2 FEET, SCRIBED "C1/4 S20" BT ON DOUBLE BLAZE.
A REFERENCE MONUMENT, 5/8" BY 24" REBAR, WITH 1 1/2" DIAMETER ALUMINUM CAP, SET 14" IN THE GROUND SURROUNDED BY A ROCK MOUND 1 FOOT IN DIAMETER BY 1 FOOT HIGH BEARS S. 27°17' W., 32.30 FEET, MARKED AS SHOWN.



**9432
1/4 CORNER OF SECTIONS 20 & 21**

FOUND A STONE 12" BY 12" BY 10" WITH CHISELED "A" LYING ON THE GROUND WIRED TO OLD FENCE. AS THE STONE IS OUT OF POSITION AND IT IS IMPOSSIBLE TO DETERMINE ITS ORIGINAL POSITION, 1 SET BY SINGLE PROPORTION A 2 1/2" DIAMETER BY 30" ALUMINUM PIPE, WITH 3 1/4" DIAMETER ALUMINUM CAP, 26" IN THE GROUND AND RAISED A MOUND OF STONE 2 FEET IN DIAMETER BY 1 FOOT HIGH (BURIED ORIGINAL CORNER STONE ALONG EAST SIDE OF MONUMENT). CAP IS MARKED AS SHOWN, FROM WHICH;



20" PONDEROSA PINE BEARS N. 53 3/4" E., 12.7 FEET, SCRIBED "1/4 S21" BT ON DOUBLE BLAZE.
19" PONDEROSA PINE BEARS S. 49 3/4" E., 37.9 FEET, SCRIBED "1/4 S21" BT ON DOUBLE BLAZE.
18" PONDEROSA PINE BEARS S. 53' W., 30.7 FEET, SCRIBED "1/4 S20" BT ON DOUBLE BLAZE.
BUCKHORN NO. 2, A 3 1/4" DIAMETER ALUMINUM CAP SET FLUSH WITH THE GROUND, BEARS N. 78°15' W., 66.88 FEET, STAMPED AS SHOWN PREVIOUSLY (CORNER NUMBER 9408).

**9433
1/4 CORNER OF SECTIONS 20 & 29**

FINDING NO EVIDENCE OF THE ORIGINAL CORNER. 1 SET BY SINGLE PROPORTION, A 2 1/2" DIAMETER BY 30" ALUMINUM PIPE, WITH 3 1/4" DIAMETER ALUMINUM CAP, 12" IN THE GROUND AND RAISED A MOUND OF STONE 2 1/2 FEET IN DIAMETER BY 2 FEET HIGH. CAP IS MARKED AS SHOWN, FROM WHICH;



A REFERENCE MONUMENT, 5/8" BY 36" REBAR, WITH 1 1/2" DIAMETER ALUMINUM CAP, SET 26" IN THE GROUND SURROUNDED BY A STONE MOUND 1 FOOT IN DIAMETER BY 1/2 FOOT HIGH, BEARS N. 54°40' E., 60.47 FEET, MARKED AS SHOWN.



BUCKHORN NO. 3, A 5/8" REBAR WITH 3 1/4" DIAMETER ALUMINUM CAP PROJECTING 10" OUT OF THE GROUND SURROUNDED BY A STONE MOUND 1 FOOT IN DIAMETER BY 10 INCHES HIGH, BEARS S. 68°54' E., 61.60 FEET, STAMPED AS SHOWN PREVIOUSLY (CORNER NUMBER 9409).

A REFERENCE MONUMENT, 5/8" BY 24" REBAR, WITH 1 1/2" DIAMETER ALUMINUM CAP, SET 15" IN THE GROUND SURROUNDED BY A STONE MOUND 2 FOOT IN DIAMETER BY 1/2 FOOT HIGH, BEARS S. 12°30' W., 79.41 FEET, MARKED AS SHOWN.



A REFERENCE MONUMENT, 5/8" BY 24" REBAR, WITH 1 1/2" DIAMETER ALUMINUM CAP, SET 22" IN THE GROUND SURROUNDED BY A STONE MOUND 2 FOOT IN DIAMETER BY 1/2 FOOT HIGH, BEARS N. 15°52' W., 78.21 FEET, MARKED AS SHOWN.



REGISTERED
PROFESSIONAL
LAND SURVEYOR
Dennis L. Gaylord
OREGON
JULY 14, 1978
DENNIS L. GAYLORD
1636
RENEWS 06/30/95

RECEIVED BY
Umatilla County Surveyor
Date 9-94
Rec'd By KK
No. 94-24-B