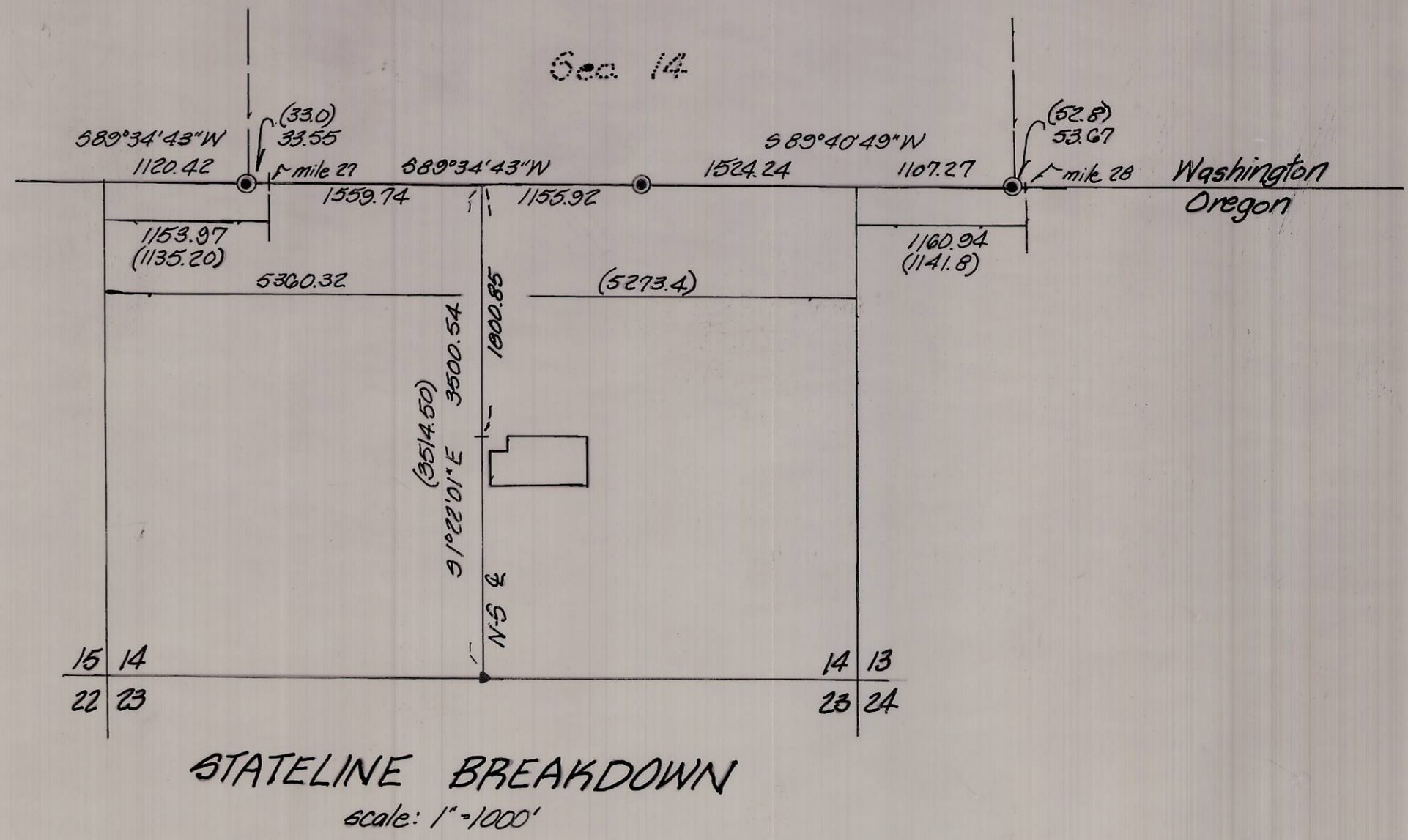


- denotes set 3/8" x 30" iron pin with aluminum cap stamped DLS 933
- ⊙ denotes find Walla Walla County Engineer's Brass Cap
- ▴ denotes find nail in road used for SW 1/4 Sec. 14, set Brass Cap
- () denotes record distance
- × denotes fence



NARRATIVE:

The purpose of this survey was to set the corners of that parcel of land belonging to Henry Demotts.

Since no surveys have been done in this area and the legal descriptions all started at the intersection of the North-South centerline of the East half of Section 14, with the Oregon-Washington State line. We had to re-proportion the section line intersections from the South with the State line for Section 14 which are offset from the same intersections from the North.

Shown in the detail are the ties between the Walla Walla County Engineer's Brass Caps for Section 14 in Washington and the record distance as found in the original G.L.D. notes. We used this ratio to proportion in mile posts 27 & 28 as found in the original notes and the intersection of Section 14 with the state line.

The South quarter corner of Section 14 is an established point used in the past. Ties from it to corners in Section 23 show it to be in the proper location.

Bearings are based on a survey by Jim Dwyer for Gilbert Tamlineon in April 1984, in the County of Walla Walla.

KRUMBEIN ENGINEERING LTD. ENGINEERS - SURVEYORS - PLANNERS 361 S.E. Second Pendleton, Oregon	Scale as shown	Drn. By MLD	Dwg. No. 84-52C	Revision 1 10-1-84
	Date 9-27-84	Ckd. By DHK	Job No. 84-116	Revision 2
Survey for DEMOTTS		REGISTERED PROFESSIONAL LAND SURVEYOR David H. Krumbein	RECEIVED BY Umatilla County Surveyor Date 3/85 Rec'd By bsc No. 85-39-B	
NW 1/4, SE 1/4, Sec. 14, T6N, R35E, W.M.				