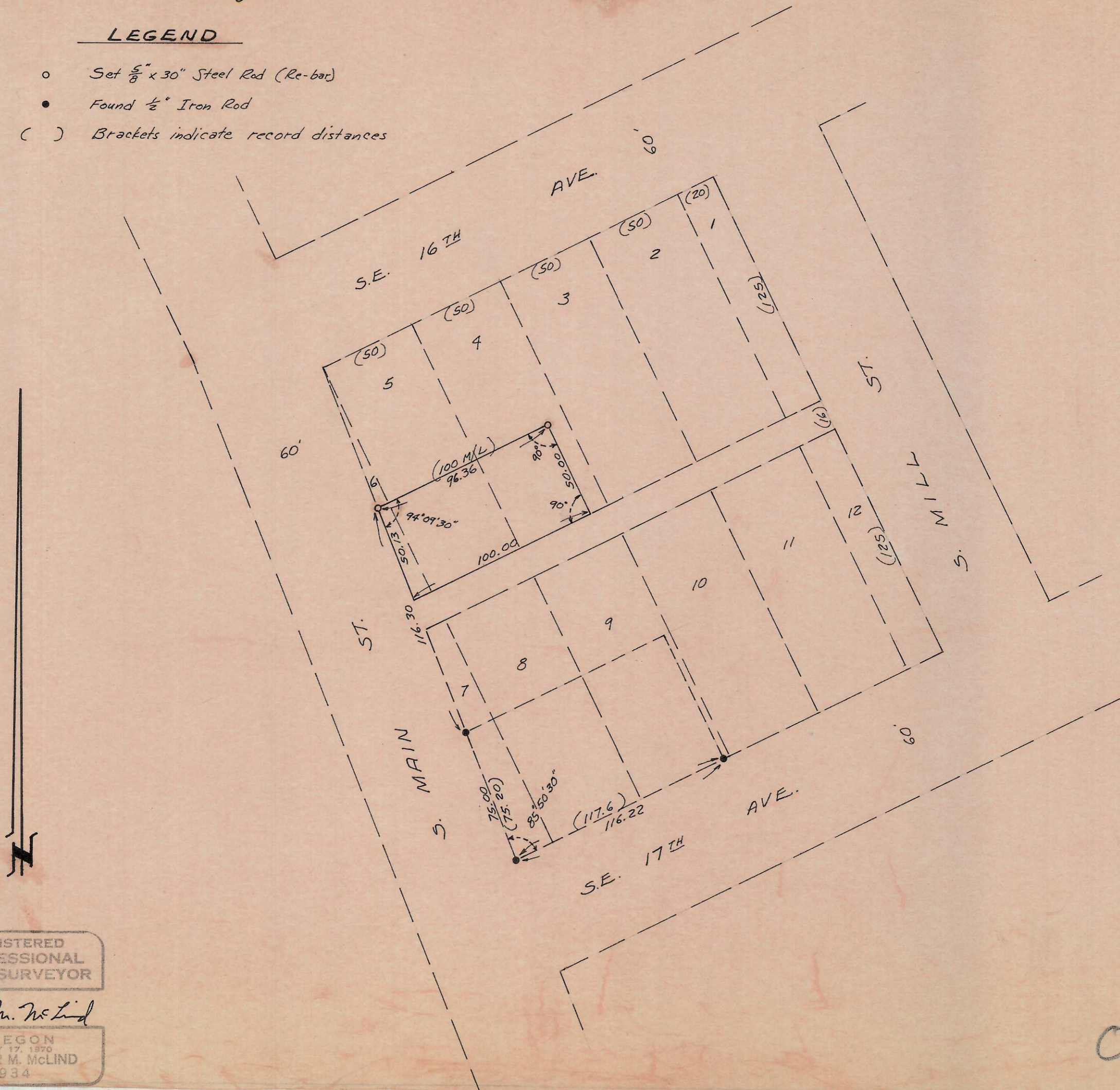


SURVEY TO SET PROPERTY CORNERS  
 IN BLOCK 1, NICHOL'S ADD.  
 MILTON-FREEWATER, OREGON  
 S.E. 1/4 SEC. 12, T.5N. R.35E. W.M.

Surveyed for H. Bailey by Victor M. McLind April, 1978

LEGEND

- Set  $\frac{5}{8}$ " x 30" Steel Rod (Re-bar)
- Found  $\frac{1}{2}$ " Iron Rod
- ( ) Brackets indicate record distances



REGISTERED  
 PROFESSIONAL  
 LAND SURVEYOR

*Victor M. McLind*

OREGON  
 JULY 17, 1970  
 VICTOR M. McLIND  
 934

041-A

A