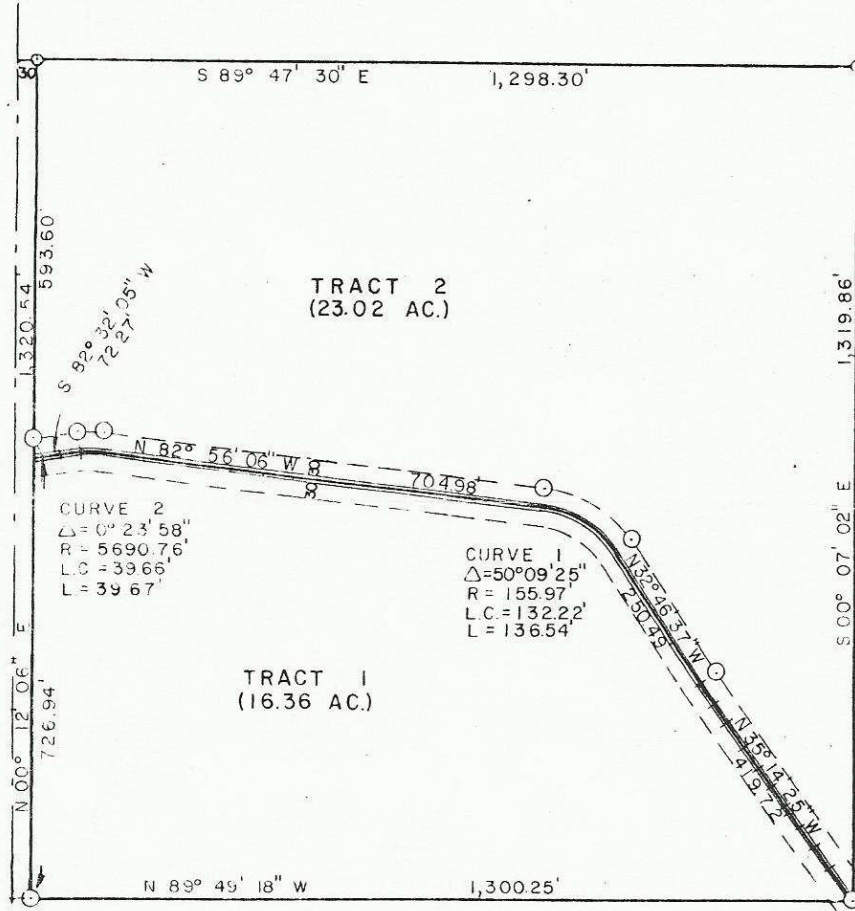


1-53-4

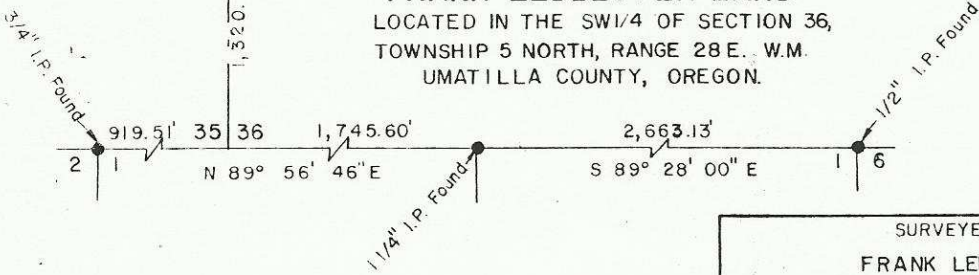
**LEGEND**

- ⊙ SET 1/2" IRON RODS.
- ⊙ SET 5/8" IRON RODS.
- FOUND INDICATED MONUMENTS.
- ==== IRRIGATION CANAL, OPEN.
- ==== IRRIGATION PIPELINE, BURIED.
- BOUNDARY OF 60' EASEMENT.

**BASIS OF BEARINGS**  
 SURVEY BY WAYNE  
 O. HARRIS CO., INC.  
 FOR ALLISON, WILSON  
 AND BROWN (1/16/74).



**RECORD OF SURVEY OF FRANK LEDBETTER LAND**  
 LOCATED IN THE SW1/4 OF SECTION 36,  
 TOWNSHIP 5 NORTH, RANGE 28 E. W.M.  
 UMATILLA COUNTY, OREGON.



SURVEYED FOR <b>FRANK LEDBETTER</b>	
SURVEYED BY <b>TELEK ENGINEERING, LA GRANDE</b>	
SCALE: 1" = 200'	DATE APRIL 10, 1975

1-53-4