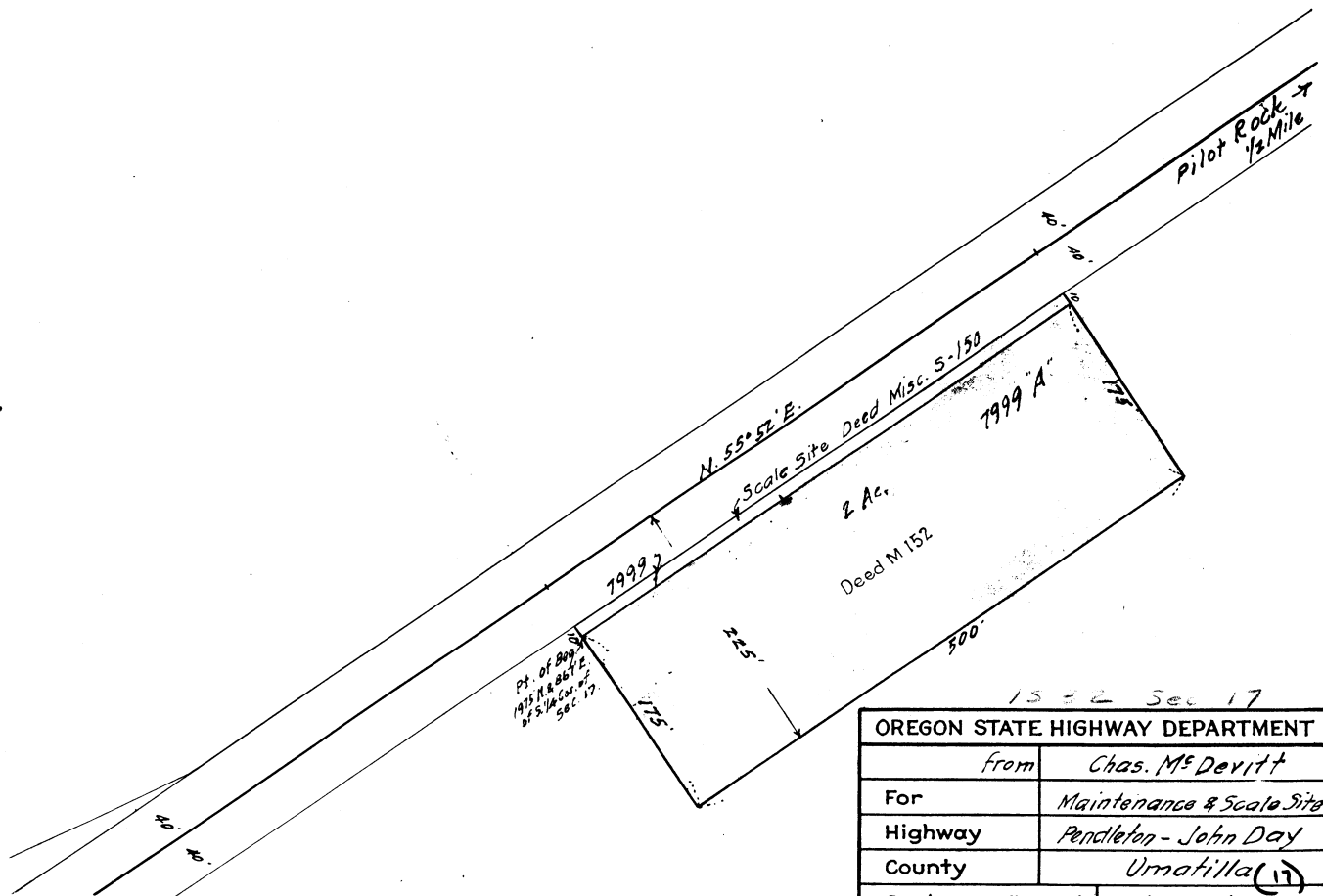


Center  
17

T. 15. R. 32 E.



15 = 2 Sec 17

OREGON STATE HIGHWAY DEPARTMENT	
From	Chas. McDevitt
For	Maintenance & Scale Site
Highway	Pendleton - John Day
County	Umatilla (17)
Scale	1" = 100'
Date	Mar. 1940