

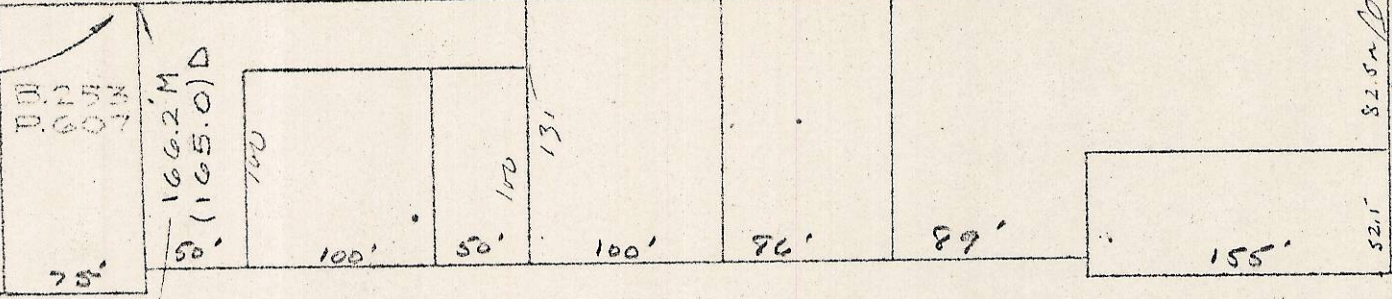
NE COR NW 1/4 SEC 2, FD.

FENCE

LINE

330.7 M
(330.0) D

IRON PIPE, SET BY



321'

1320.0'

225.5' M.L

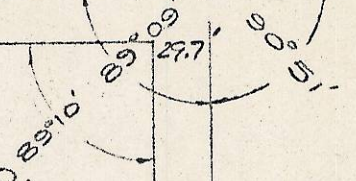
420' M.L

346.5'

NE COR SE 1/4 NW 1/4 SEC 2, FD.

SE COR NW 1/4 NE 1/4 SEC 2, FD.

THIS ANGLE WAS TAKEN FROM A MAP OF THE AMERICAN CAN CO. PROPERTY. MAP WAS NOT SIGNED OR STAMPED



437.6
(439.1)

E.179 R.436

566.3 M
(564.3) D

RECEIVED BY

Umatilla County Surveyor

Date: 2/8/2013

Rec'd By: S. Res

No.: 13-068-A

A-1

NOTE:

D = DISTANCE BY DEED
M = ACTUAL MEASURED DISTANCE

5N352 BA



BEZOE

LIZE

327.8' M
(330.0) D

330.7' M
(330.0) D

IRON PIPE, SET BY

D. 258
D. 607

166.2' M
(165.0) D

SET IRON PIPE
1 1/2" X 30"
264'

321'

78'

50'

100'

50'

100'

96'

89'

1320.0'

150'

146' MIL

225.5' MIL

420' MIL

346.5'

B. 181 R. 29
LESS
B. 182 R. 174

337.8' M
(338.0) D

437.6' M
(439.1) D

B. 179 R. 436

566.3' M
(564.3) D

THIS ANGLE WAS
TAKEN FROM A
MAP OF THE
AMERICAN CAN CO
PROPERTY
MAP WAS NOT SIGN
OR STAMPED

RECEIVED BY

Umatilla County Surveyor

Date: 3/8/2013

Rec'd By: J. Pres

No.: 13-068-13

NOTE:

D = DISTANCE BY DEE
M = ACTUAL MEASURE
DISTANCE

A-3

OLD CORNER
DOWN