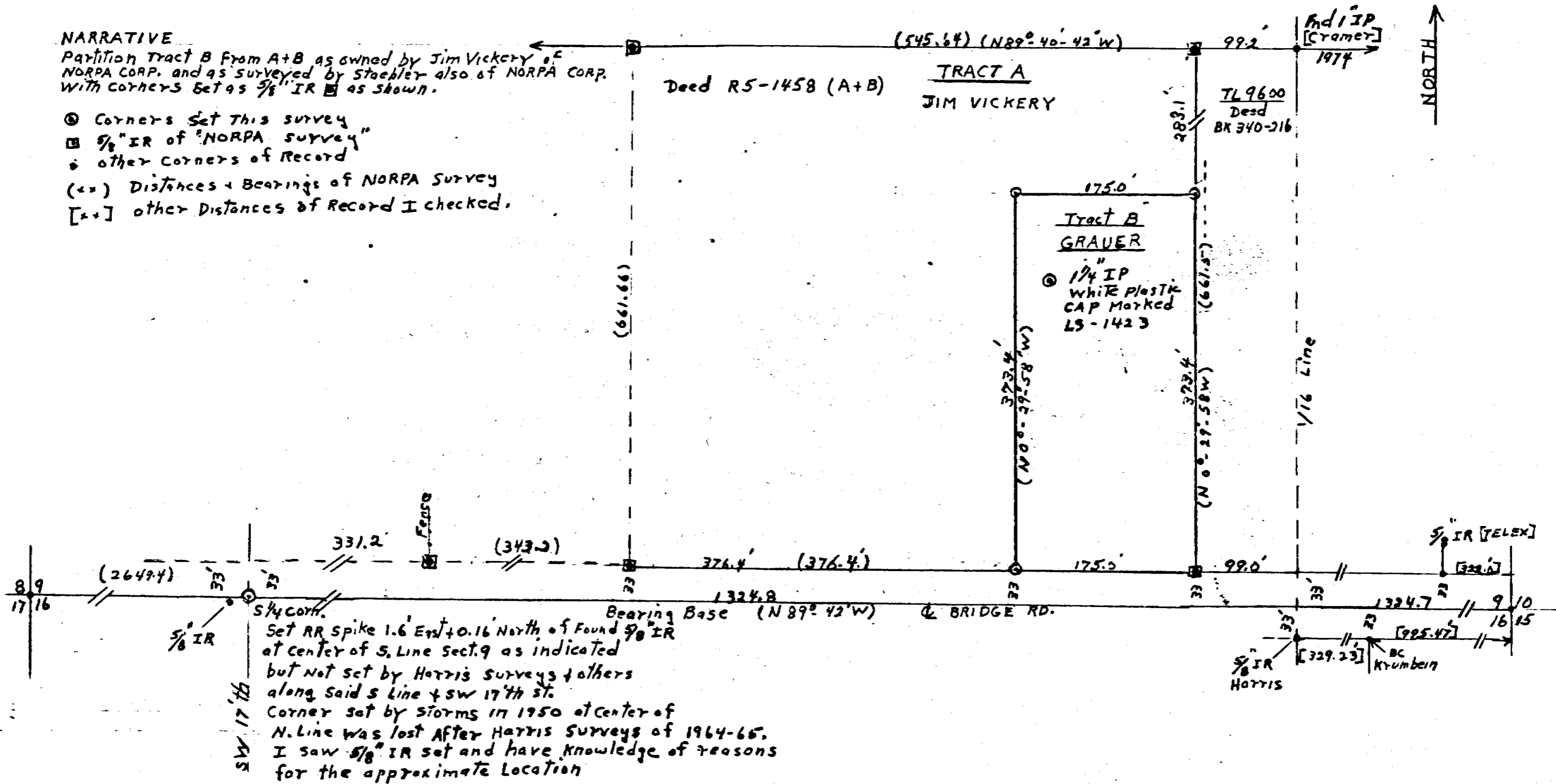


NARRATIVE

Partition Tract B From A+B as owned by Jim Vickery of NORPA CORP. and as surveyed by Staebler also of NORPA CORP. With corners set as 5/8" IR as shown.

- ⊙ Corners Set This Survey
- ⊠ 5/8" IR of "NORPA Survey"
- other corners of Record

- (=) Distances + Bearings of NORPA Survey
- [=] other Distances of Record I checked.



SW 1/4 SW 17th St
 S 1/4 Corn.
 Set RR spike 1.6' East + 0.16' North of Found 5/8" IR at center of S. Line Sect. 9 as indicated but not set by Harris surveys + others along said S Line + SW 17th St. Corner set by storms in 1950 at center of N. Line was lost after Harris surveys of 1964-65. I saw 5/8" IR set and have knowledge of reasons for the approximate location

REGISTERED PROFESSIONAL LAND SURVEYOR

W. W. Cramer

OREGON
 SEPT. 30, 1977
 WALTER W. CRAMER
 1423

TEL 567-3471

SURVEY FOR DON GRAUER
 SW 1/4 of SE 1/4 of S9-T4N-R23E
 Issue 1 9-12-84 scale 1" = 100'

RECEIVED BY
 Umatilla County Surveyor
 Date 9/84
 Rec'd By DC
 No. 84-103-A

84-103-A