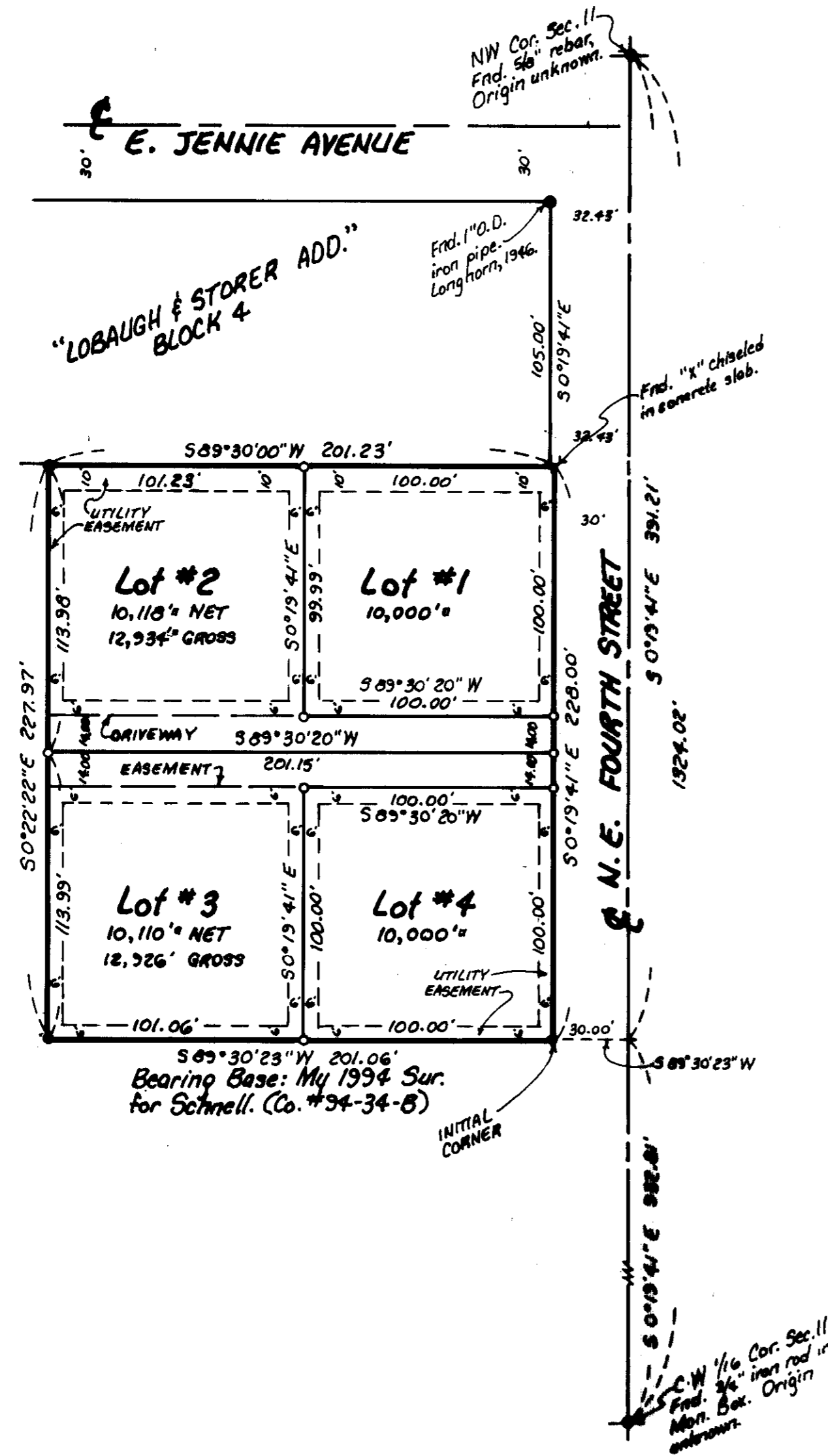


# NADYNE ESTATES

In Southwest Quarter of the Northwest Quarter of Section 11, T4N, R28E, W. M.,  
City of Hermiston, Umatilla County, Oregon

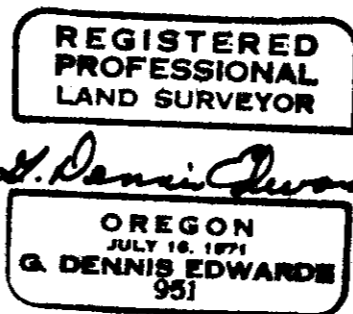
Prepared By:  
Edwards Surveying P.O. Box 763  
503-567-3336 Hermiston, OR, 97038  
Dwn. By: S.K.B.



### SURVEYOR'S CERTIFICATE:

I, G. Dennis Edwards, say that I have correctly surveyed and marked with legal monuments the land represented on this Plat. I surveyed the boundary of this parcel in a 4/4/94 survey for Schnell (County #94-34-B). His deed said that the initial corner lies 927 feet North and 30 feet West of the C-W 1/16 corner of Section 11 but I make it 932.81 feet North and 30 feet West of said 1/16 corner. (See Survey #94-34-B)  
The Initial Corner is a 5/8" rebar driven 3 inches below the surface and lies N 0°19'41" W 932.81 feet and S 89°30'23" W 30.00 feet from the C-W 1/16 corner.

G. Dennis Edwards  
G. Dennis Edwards, PLS 951



### LEGAL DESCRIPTION:

Beginning of the above described Initial Corner and running; thence S 89°30'23" W 201.06 feet; thence N 0°22'22" W 227.97 feet to a point on the South line of Block 4, "LOBAUGH AND STORER ADDITION"; thence S 89°30'00" W along the South line of said Block 4 a distance of 201.23 feet to a point on the West line of 4th Street; thence S 0°19'41" E along said West line 228.00 feet to the Point of Beginning.  
See Deed Book 269, Page 288, Umatilla County Deed Records.

### DEDICATION:

Know all men by these presents: that the undersigned owners of the land shown on this Plat do hereby dedicate the 6 foot and 10 foot utility easements, as shown, for private and or public utilities. We also dedicate the South 14 feet of Lot 2 for an easement for ingress and egress for the benefit of Lot 3. We also dedicate the North 14 feet of Lot 3 for an easement for ingress and egress for the benefit of Lot 2. Said 14 foot easements are also for utilities.  
We hereby acknowledge we have caused this Plat to be prepared.

Stanley Schnell      A.C. Joplin  
Stanley Schnell      A.C. Joplin

State of Oregon } 95  
County of Umatilla }  
Subscribed and sworn before me on this 23 day of May, 1994.

Linda Edmuth  
Notary Public for Oregon  
My commission expires 11-18-94.

### HERMISTON IRRIGATION DISTRICT:

This property is within the Hermiston Irrigation District boundaries and could be subject to liens, levies and assessments of the District. The accompanying Plat is hereby approved.  
Dated on this 31 day of MAY, 1994.

J.P. Gill  
Manager

### APPROVALS

#### UMATILLA COUNTY SURVEYOR:

I, Umatilla County Surveyor, do hereby certify that I have examined the accompanying Plat, that it complies with the laws of the State of Oregon with reference to the filing and recording of such Plats, and I therefore approve said Plat for the approval of the County Commissioners of Umatilla County, Oregon.  
Dated this 24 day of May, 1994.

David H. Kraus  
Umatilla County Surveyor

#### CITY OF HERMISTON PLANNING COMMISSION:

The accompanying Plat is hereby approved by resolution and adopted on this 25 day of May, 1994 and approval duly filed.

Bernard W. Cooper      Stephanie J. McCullough  
Chairman      Secretary

#### HERMISTON CITY COUNCIL:

The accompanying Plat is hereby approved by resolution and adopted on this 25 day of APRIL, 1994 and approval duly filed.

James Harken  
Mayor

#### UMATILLA COUNTY COMMISSIONERS:

This is to certify that the accompanying Plat is approved for filing and recording in the "Record of Town Plats" of Umatilla County, Oregon, by the undersigned by its order.  
Dated this 6 day of June, 1994.

William B. Howard      Glen Young  
Chairman      Commissioner  
Luella M. Holman  
Commissioner

#### ASSESSOR & TAX COLLECTOR:

We, the Assessor and the Tax Collector of Umatilla County, Oregon, do hereby certify that we have examined the tax records relative to the land covered by the accompanying Plat and that all monies due for the State and County taxes and assessments that could constitute a lien on said land have been paid and we hereby approve said Plat.  
Dated this 6 day of June, 1994.

Dana M. Muehlen      Richard M. Muehlen  
County Assessor      County Tax Collector

#### UMATILLA COUNTY CLERK:

Attest: I, the County Clerk of Umatilla County, Oregon, do hereby certify that the above named were on the date of said order above specified and now are duly qualified, elected, sworn and acting Chairman and Commissioners of said County, and that the seal hereto affixed is the seal of my office. Dated this    day of   , 1994.

Umatilla County Clerk  
RECEIVED BY  
Umatilla County Surveyor  
Date 7-94  
Rec'd By [Signature]  
No. 94-76-B

STATE OF OREGON }  
COUNTY OF UMATILLA }  
I, Thomas L. Groat, County Clerk, certify that this instrument was received and recorded on JUNE 07 1994 at 10:13 o'clock A.M. in the record of TOWN PLATS of said County in Book 13 Page 44  
THOMAS L. GROAT  
County Clerk  
\$ / GEORGIA MCNAUGHT  
Paid \$ 15.00 No. 94-19833

Scale: 1" = 50'  
April 25, 1994

### LEGEND:

- Found 5/8" rebar with plastic cap #951. Me, Co. #94-34-B. Unless noted otherwise.
- Set 5/8" x 30" rebar with plastic cap #951.

This is an exact copy.  
G. Dennis Edwards