

STATE OF OREGON }
 COUNTY OF UMATILLA }
 I, Thomas L. Groat, County Clerk, certify that
 this instrument was received and recorded
 ON OCT. 29, 1992
 at 9:30 o'clock A.M. in the record
 of TOWN PLATS of said County in
 Book Page
 13 19
 THOMAS L. GROAT
 County Clerk
 By S/GEORGIA MCNAUGHT Deputy
 Fees \$ 15.00 No. 92-176606

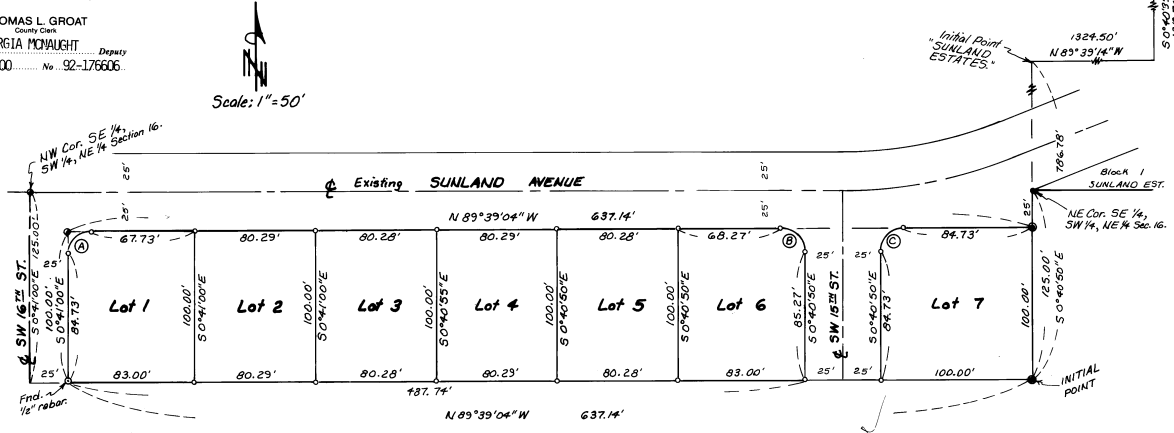
ARLENE ESTATES

In Northeast 1/4 of Section 16, T4N, R28E, W.M.,
 Umatilla County, Oregon
 City of HERMISTON

CURVE DATA				
No.	Radius	Tangent Length	Chord	Chord
A	15	13.27	23.83	N44°49'58"E 21.40
B	15	14.73	23.29	S45°09'51"E 21.02
C	15	15.27	23.83	N44°50'03"E 21.40

LEGEND:

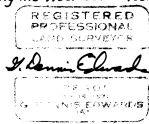
- Found 1/2" iron pipe, SW corner of "SUNLAND ESTATES."
- Found RR spike, stamped 351. Set by me in 1992 Sur. for Burns, Aldridge.
- Found 3/8" x 30" rebar with plastic cap #951. Set by me in 1992 Survey for Burns, Aldridge.
- Set 1/2" x 24" rebar with plastic cap #351.
- Found 1/2" x 24" rebar with plastic cap #951. Set by me in 1992 Survey for Burns, Aldridge.



SURVEYOR'S CERTIFICATE:

I, G. Dennis Edwards, being first duly sworn, do depose and say that I am a duly registered surveyor of the State of Oregon and that I have correctly surveyed and marked with legal monuments the land represented on the accompanying Plat; the Initial Point is a 3/8" x 30" rebar driven 6 inches below the surface and it lies S 0°40'35"E 1319.74 feet, N 89°39'14"W 1324.50 feet and S 0°40'50"E 706.78 feet from the Northeast corner of Section 16, T4N, R28E, W.M., Umatilla County, Oregon.
 The description of this parcel is the South 100.00 feet of the North 125.00 feet of the Southeast Quarter of the Southwest Quarter of the Northeast Quarter of said Section 16. Excepting the West 25.00 feet.

G. Dennis Edwards
 G. Dennis Edwards, PLS 951



State of Oregon }
 County of Umatilla } 55
 On this 27th day of October, 1992, personally appeared Paul and Joe Burns, who being duly sworn acknowledged this instrument to be their free and voluntary act and deed.
James K. Kopta
 Notary Public for Oregon
 My commission expires 4-24-93

UMATILLA COUNTY ASSESSOR & TAX COLLECTOR:

We, the Assessor and the Tax Collector of Umatilla County, Oregon, each hereby certify that we have examined the tax records relative to the land covered by the accompanying Plat and that all monies for State and County taxes and assessments that could constitute a lien on said land have been paid and we hereby approve said Plat, dated this 27th day of October, 1992.

James T. White Assessor
Edward S. Johnson Deputy Assessor
Ronald Anderson Tax Collector
Blanche Dennis Deputy Tax Collector

APPROVALS

CITY OF HERMISTON SURVEYOR:
 I, City of Hermiston Surveyor, do hereby certify that I have examined the accompanying Plat, that it complies with the laws of the State of Oregon with reference to the filing and recording of such Plats, and I, therefore approve said Plat for the approval of the County Commissioners of Umatilla County, Oregon, dated this 12th day of October, 1992.
Robert D. Neppelton
 City Surveyor

CITY OF HERMISTON PLANNING COMMISSION:
 The accompanying Plat is hereby approved by resolution and adopted on this 12th day of October, 1992, and approval duly filed.
Bernard L. Carper Chairman
Christina A. McCullough Secretary

HERMISTON CITY COUNCIL:
 The accompanying Plat is hereby approved by resolution and adopted on this 12th day of October, 1992, and approval duly filed.
James J. Hanken
 Mayor

UMATILLA COUNTY COMMISSIONERS:

This is to certify that the accompanying Plat is approved for filing and recording in the "Record of Town Plats" of Umatilla County, Oregon, by the undersigned by its order dated this 29 day of October, 1992.
Glenn Youngman Chairman
Emile Matfield Commissioner
Absent Commissioner

UMATILLA COUNTY CLERK:

Attest: I, the County Clerk of Umatilla County, Oregon, do hereby certify that the above named were on the date of said order above specified and now are the duly qualified, elected, sworn and acting Chairman and Commissioners of said County; that the signatures are the genuine signatures thereof and the seal hereto affixed is the seal of my office.
 Dated this 29 day of October, 1992.
Thomas L. Groat
 County Clerk

EASEMENT DEDICATION:

Know all men by these presents: that the undersigned owners of the land shown on the accompanying Plat, do hereby dedicate to the use of the public forever the streets and a 6 foot continuous easement along all lot lines. Said easements being parallel to all lot lines and is hereby dedicated by the declarators for use by any and all city utilities and/or public utilities and for their installation and maintenance, irrespective of whether the same may be installed before or after sale by the declarators herein. That the undersigned parties do hereby establish and acknowledge the accompanying Plat as the official Map and Plat of "ARLENE ESTATES."

Paul Burns
 Paul Burns
Joe Burns
 Joe Burns

This is an exact copy
G. Dennis Edwards