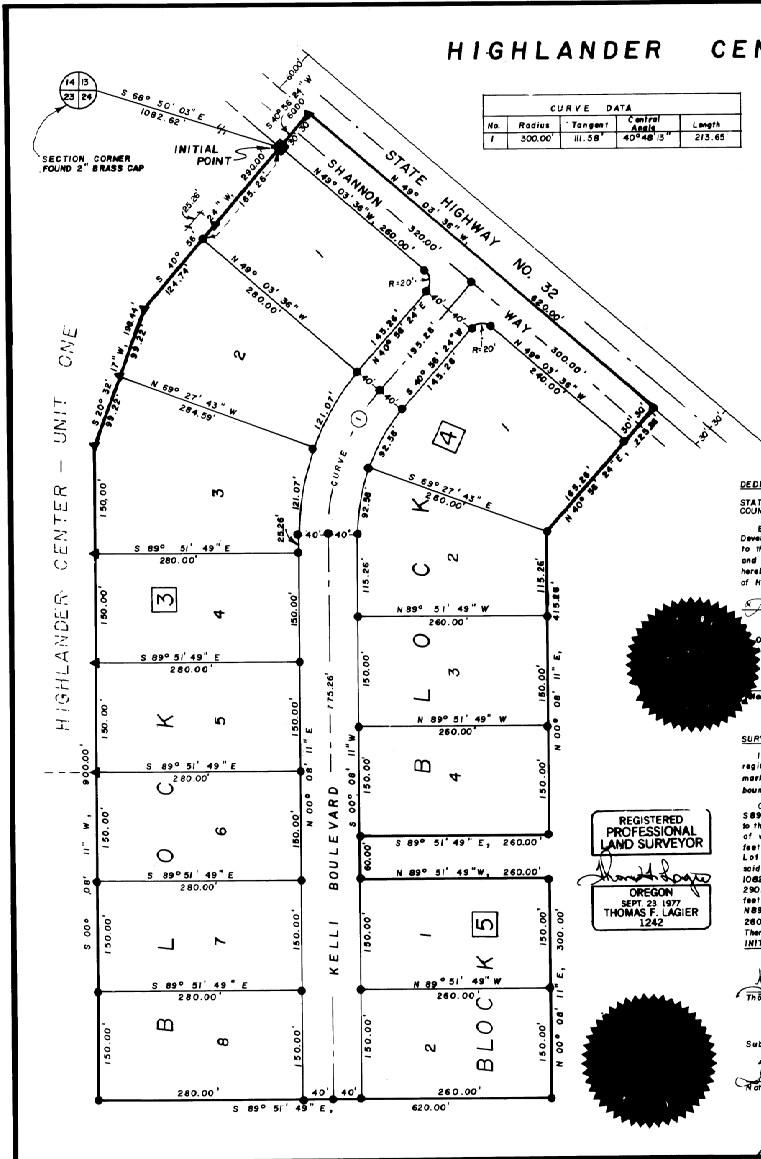


# HIGHLANDER CENTER SUBDIVISION - UNIT TWO

A PLANNED UNIT DEVELOPMENT TO THE CITY OF HERMISTON, UMATILLA COUNTY, OREGON

No.	Radius	Tangent	Central Angle	Length
1	300.00'	31.58'	40°48'13"	213.65



SCALE: 1"=100'

**BASIS OF BEARING**  
 Southerly boundary of State Highway No. 32 (right of way line, S49°03'36"E) as determined in plot of Highlander Center Subdivision-Unit One.

**LEGEND**

- ▲ Found 5/8" iron rod.
- INITIAL POINT found 5/8" iron rod. Set 2" Brass cap set in 6" diameter Concrete Manhole.
- Set 5/8" x 30" iron rod.

**DEDICATION**

STATE OF OREGON (S COUNTY OF UMATILLA)  
 Be it hereby known by these presents that the undersigned, Officer, for Combat Development, Inc., Owner of the land shown on the accompanying plat, do hereby dedicate to the use of the public forever the streets, drives and ways depicted on said plat, and a 6" utility easement adjacent to all lot lines. That the undersigned Officer do hereby assign and acknowledge the accompanying plat as the official map and plat of HIGHLANDER CENTER SUBDIVISION - UNIT TWO, Hermiston, Umatilla County, Oregon.

*July 27 day of July 1978*  
 I, *Thomas F. Legier*, being first duly sworn, do depose and say that I am a duly registered Surveyor of the State of Oregon, and that I have correctly surveyed and marked with legal monuments the land represented on the accompanying plat, the boundaries described as:  
 Commencing at the northwest corner of Section 24, T4N, R22E, W.M.; thence S89°34'39"E, along the north line of said Section 24, a distance of 654.11 feet to the intersection with the southerly boundary of Oregon State Highway No. 32 right of way; thence S49°03'36"E along the State Highway right of way boundary 200.00 feet; thence S40°26'24"W a distance of 80.00 feet to the most westerly corner of Lot 1, Block 2, HIGHLANDER CENTER SUBDIVISION - UNIT ONE, Hermiston, Oregon, said corner being the INITIAL POINT and being located S88°50'03"E, a distance of 1082.62 feet from the northwest corner of said Section 24; Thence S40°26'24"W, 230.00 feet; Thence S30°22'17"W, 195.44' feet; Thence S00°08'11"W, 900.00 feet; Thence S89°51'49"E, 620.00 feet; Thence N00°08'11"E, 300.00 feet; Thence N89°51'49"E, 280.00 feet; Thence N00°08'11"E, 415.26 feet; Thence N40°16'24"E, 225.25 feet; Thence N49°03'36"W, 620.00 feet; Thence S40°26'24"W, 60.00 feet to the INITIAL POINT.

REGISTERED PROFESSIONAL LAND SURVEYOR  
 OREGON  
 SEPT 23 1977  
 THOMAS F. LAGIER  
 1242

**SURVEYOR'S CERTIFICATE**

I, Thomas F. Legier, being first duly sworn, do depose and say that I am a duly registered Surveyor of the State of Oregon, and that I have correctly surveyed and marked with legal monuments the land represented on the accompanying plat, the boundaries described as:  
 Commencing at the northwest corner of Section 24, T4N, R22E, W.M.; thence S89°34'39"E, along the north line of said Section 24, a distance of 654.11 feet to the intersection with the southerly boundary of Oregon State Highway No. 32 right of way; thence S49°03'36"E along the State Highway right of way boundary 200.00 feet; thence S40°26'24"W a distance of 80.00 feet to the most westerly corner of Lot 1, Block 2, HIGHLANDER CENTER SUBDIVISION - UNIT ONE, Hermiston, Oregon, said corner being the INITIAL POINT and being located S88°50'03"E, a distance of 1082.62 feet from the northwest corner of said Section 24; Thence S40°26'24"W, 230.00 feet; Thence S30°22'17"W, 195.44' feet; Thence S00°08'11"W, 900.00 feet; Thence S89°51'49"E, 620.00 feet; Thence N00°08'11"E, 300.00 feet; Thence N89°51'49"E, 280.00 feet; Thence N00°08'11"E, 415.26 feet; Thence N40°16'24"E, 225.25 feet; Thence N49°03'36"W, 620.00 feet; Thence S40°26'24"W, 60.00 feet to the INITIAL POINT.

Subscribed and sworn to before me this *17* day of *July*, 1978.  
*Juliana E. Owen*  
 Notary Public of Oregon My Commission expires *7/19/79*

**APPROVALS**

**CITY OF HERMISTON PLANNING COMMISSION**  
 The accompanying plat is hereby approved by resolution and adopted on this *23* day of *October*, 1978 and approval duly filed.

*Bernard W. Cooper*, Chairman  
*Juliana E. Owen*, Secretary

**CITY ENGINEER**  
 Approved this *23* day of *October*, 1978.

*Robert E. Magallon*, City Engineer

**HERMISTON CITY COUNCIL**  
 The accompanying plat is hereby approved by resolution and adopted on this *23* day of *October*, 1978 and approval duly filed.

*L.P. Gray*, Mayor

**HERMISTON IRRIGATION DISTRICT**  
 The accompanying plat is hereby approved by resolution and adopted on this *23* day of *October*, 1978 and approval duly filed.

*Hugh Thompson*, Chairman

**UMATILLA COUNTY ASSESSOR AND TAX COLLECTOR**

I, James T. White Sr. and I, D. L. Brist, respectively, Assessor and Tax Collector of Umatilla County, Oregon, each hereby certify that we have examined the tax records relative to the land covered by the accompanying plat, and that all monies due for state and county taxes and assessments that could now constitute a lien on said land have been paid and we hereby approve said plat, dated this *9* day of *November*, 1978.

*James T. White*, Assessor  
*D. L. Brist*, Tax Collector

**UMATILLA COUNTY COMMISSION**

This is to certify the accompanying plat is approved for filing and placed in the record of town plats of Umatilla County, Oregon by the undersigned by its order dated the *23* day of *October*, 1978, and recorded in the County journal \_\_\_\_\_ page \_\_\_\_\_.

*Robert K. Smith*, *Paul Blalock*  
 Chairman, Commissioner

**UMATILLA COUNTY CLERK**

ATTEST: I, Jessie M. Bell, County Clerk of Umatilla County, Oregon, do hereby certify that the above named were on the date of said order above specified and are now the duly qualified, elected, sworn, and acting officers and commissioners of said county; that the signatures are the genuine signatures hereof and the seal hereto affixed is the seal of my office.

*Jessie M. Bell*, County Clerk

**STATE OF OREGON**

COUNTY OF UMATILLA  
 I, *Jessie M. Bell*, County Clerk, certify that this instrument was received and recorded on *Nov. 29, 1978*

at *100* o'clock *P.* in the record of *Town Plats* of said County in Book *12* Page *4*

JESSIE M. BELL  
 County Clerk  
 By *Betty Browning* Deputy  
 Fee \$ *10.00* xv *48-79*