

STATE OF OREGON
COUNTY OF UMATILLA ss

I, Frank R. Ofner, being first duly sworn, depose and say: That I correctly surveyed and marked with proper monuments as indicated on the accompanying plat of the BORTHWICK ADDITION TO THE CITY OF HERMISTON located in Umatilla County, Oregon the lands indicated thereon; that to indicate the initial point of such survey and as shown on said plat, I placed a 6" x 24" concrete monument six inches below the ground surface at the Northwest corner of said land; that said point is located S. 89° 55' E. 130.00 ft., along the Section line common to Sections 10 and 15, T. 4 N., R. 28 E. W.M. from the quarter corner common to said Sections 10 and 15; which is a known corner established by the United States Survey; that the exterior boundaries of the tract of land upon which said lots and blocks are laid out are as follows:

A part of the N.W. 1/2 of the N.W. 1/4 of the N.E. 1/4 of Section 15, T. 4 N., R. 28 E. W.M. being more particularly described as follows:

Beginning at the point described above; thence S. 00° 13' 15" E. 413.73 ft. parallel to the North-South line through the center of said Section 15; thence South 89° 55' 00" E. 150.00 ft. parallel to the North line of said Section 15; thence N. 00° 13' 15" W. 6.73 ft. parallel to the said North-South line through the center of said Section 15; thence S. 89° 55' 00" E. 382.72 ft. parallel to the North line of Section 15; thence N. 00° 11' 47" W. 108.00 ft.; thence S. 89° 55' 00" E. 31.50 ft. parallel to the North line of Section 15; thence N. 00° 11' 18" W. 299.00 ft. to a point on the North line of said Section 15; thence N. 89° 55' W. 564.39 ft. along said North line of Section 15 to the point of beginning.

That I inscribed my registration number on every monument marking every corner that I established or reestablished on said land and as shown on said Plat; and that survey and all markings have been done as required by law.

Frank R. Ofner
Registered Professional Engineer
State of Oregon, Reg. No. 2475

Subscribed and sworn to before me this 1st day of May 1950

Frank R. Ofner
Notary Public for Oregon
My Commission Expires Aug 12 1950

I, F.B. Hayes, County Surveyor of Umatilla County, Oregon, hereby certify that I have carefully examined the accompanying plat and checked the same and the computations for making said plat to determine if they comply with the provisions of the law and with the requirements of the planning agencies and of the County Court; that the streets, drives and ways shown thereon are laid out so as to conform to all plats of adjoining property already filed as to width, general direction and in all other respects, and are dedicated to the public use without any reservation or restriction whatever; that the name is proper so as to comply with the provisions of Sec. 95-1309, O.C.L.A., and other laws of the State of Oregon relative thereto; I further certify that said corner is the original corner established by the United States Survey, and I therefore approve said plat for approval by said Court and for filing and record.

Dated Aug 8, 1950

F.B. Hayes
County Surveyor of Umatilla County
State of Oregon C.E. Reg. No. 197

STATE OF OREGON ss
COUNTY OF UMATILLA

I, Frank R. Ofner, being first duly sworn, depose and say: That I am the Surveyor who surveyed and marked as required by law, the lands indicated on the accompanying plat, and that this tracing is a true and exact copy of the final map and plat thereof now being filed for record.

Frank R. Ofner
Registered Professional Engineer
State of Oregon, Reg. No. 2475

Subscribed and sworn to before me this 8th day of Aug 1950

Frank R. Ofner
Notary Public for Oregon
My Commission Expires Nov 16 1953

BORTHWICK ADDITION TO THE CITY OF HERMISTON

LOCATION: N. 1/2 OF THE N.W. 1/4 OF THE N.E. 1/4
OF SECTION 15, T. 4 N., R. 28 E. W.M.

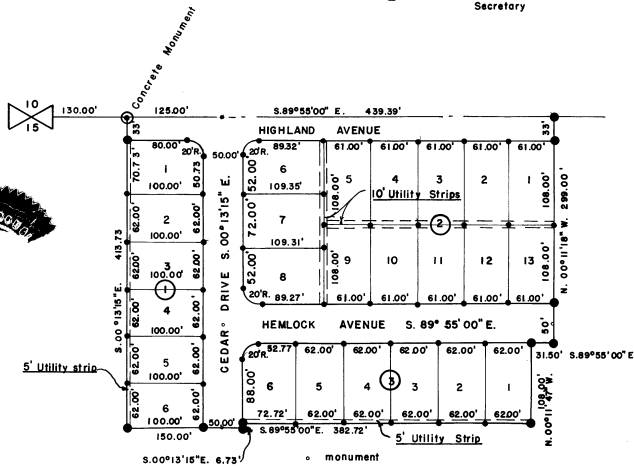
ATTORNEY: ALFRED F. CUNHA
ENGINEER: FRANK R. OFNER

The accompanying Plat is approved by resolution of the undersigned, duly adopted on 5-2 1950 and report of said approval duly filed.

CITY PLANNING COMMISSION
CITY OF HERMISTON, OREGON

By *Stephen E. Prather*
President

By *W. W. Anderson*
Secretary



- o monument
- 1/2" x 24" Iron pin
- 3/4" x 30" Iron pin.

Scale: 1" = 100'

The accompanying Plat is approved by resolution of undersigned's Board of Directors, adopted on 5-2 1950

HERMISTON IRRIGATION DISTRICT,
A MUNICIPAL CORPORATION

By *E. K. Johnson*
Chairman, Board of Directors

By *W. W. Anderson*
Secretary



KNOW ALL MEN BY THESE PRESENTS: That A. E. Berg and Marion Berg, his wife, being the owners of the land shown on the accompanying Plat do hereby dedicate to the use of the public forever the streets, drives, ways, and utility strips designated on said plat, and do hereby establish and acknowledge the accompanying as the official map and Plat of Borthwick Addition.

Dated May 6 1950

A. E. Berg
A. E. Berg
Marion Berg
Marion Berg

STATE OF OREGON ss
COUNTY OF UMATILLA

On the 5th day of May 1950, A. E. Berg and Marion Berg, husband and wife, to me known to be the individuals described in and who executed the foregoing instrument and acknowledged the foregoing instrument to be their voluntary act and deed.

Loed Johnson
Notary Public for Oregon

My Commission Expires 17 July 1950

Approved 1 MAY 1950

Frank R. Ofner
City Engineer
City of Hermiston, Oregon

I, D.W. Davis, and I, Vina Haskins Deputy, respectively Assessor and Sheriff of Umatilla County, Oregon, do each hereby certify that we have examined the tax records relative to the land covered by the accompanying plat and that all moneys due for State and County taxes and assessments that could now constitute a lien on said land have been paid, and we hereby approve of said plat.

Dated Aug 8 1950

D.W. Davis
Assessor
R. E. Good
Sheriff Deputy

This is to certify that the accompanying plat is approved for filing and record in "Record of Town Plats" of Umatilla County, Oregon, by the undersigned by its order dated August 8 1950, recorded in County Court Journal 1 page 175

COUNTY COURT OF UMATILLA COUNTY
STATE OF OREGON

By *James K. Steing*
County Judge
By *Henry B. Biamont*
County Commissioner
By *J. E. Olinger*
County Commissioner

Attest:
Wm. H. Sauter
County Clerk of Umatilla County, Oregon, do hereby certify that the above named were on the date of said order above specified and now are the duly qualified, elected, sworn and acting Judge and Commissioners of said County; that the above signatures are the genuine signatures thereof; and that the seal hereof is used in the seat of my office.

Wm. H. Sauter
County Clerk of Umatilla County, Oregon

1145 A
7
23
Town Plat
Jack Tolson
7/20 122008