

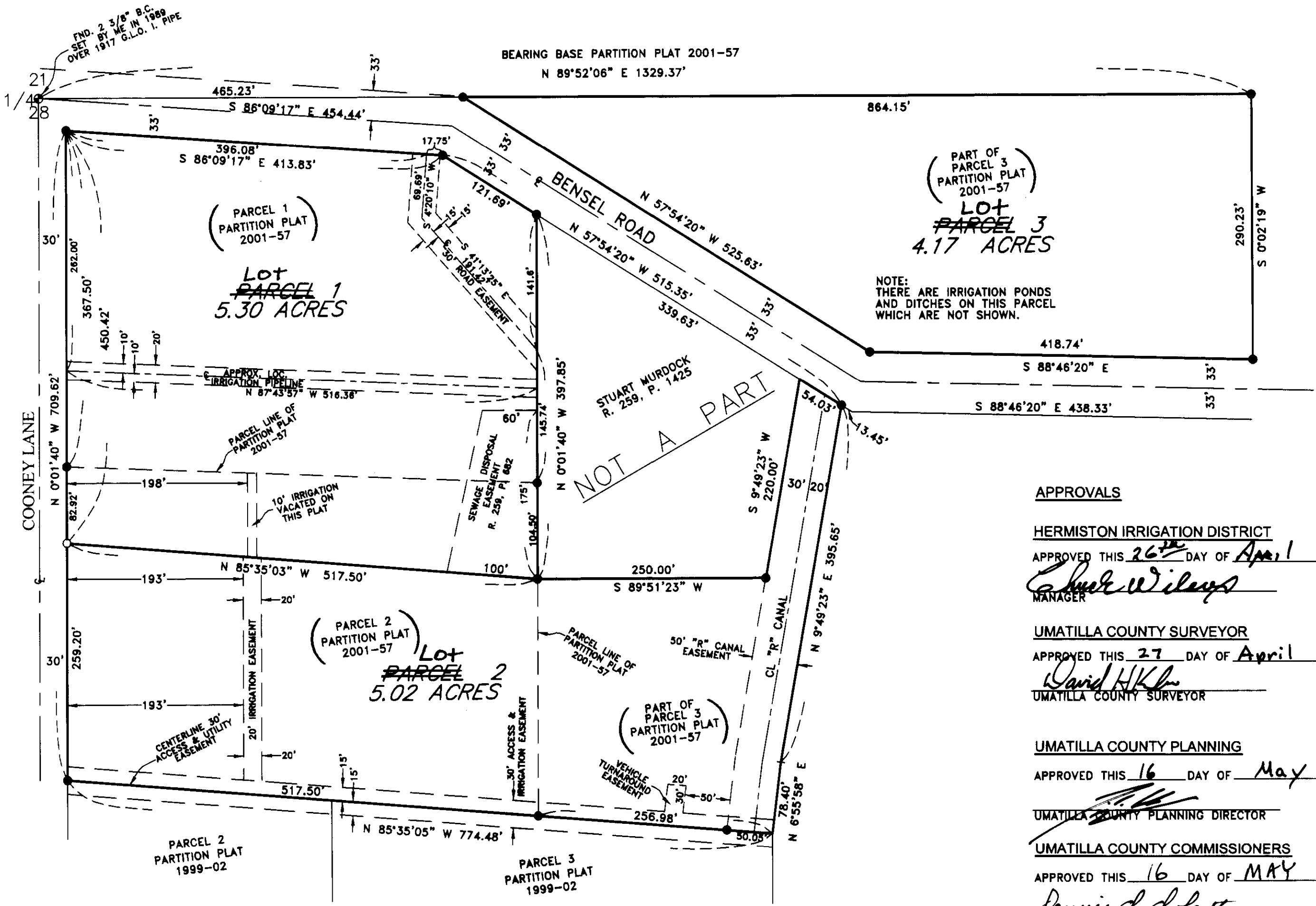
2006-11

# MEADE HEIGHTS

A REPLAT OF PARTITION PLAT 2001-57  
IN NE 1/4, SECTION 28, T 5 N, R 28 E, .WM.,  
UMATILLA COUNTY, OREGON  
#LD-5N-694-05

**SURVEYOR'S CERTIFICATION & NARRATIVE:**  
I, G. DENNIS EDWARDS, AM A REGISTERED SURVEYOR OF THE STATE OF OREGON AND HAVE MARKED WITH PROPER MONUMENTS THE LAND SHOWN ON THIS PLAT.  
I SURVEYED THIS PROPERTY IN PARTITION PLAT 2001-57. THIS SURVEY AND THE BEARINGS ARE BASED ON THAT 2001 SURVEY.  
DESCRIPTION: PARCELS 1, 2, AND 3, PARTITION PLAT 2001-57, IN THE NE 1/4 OF SECTION 28, TOWNSHIP 5 NORTH, RANGE 28 EAST, WILLAMETTE MERIDIAN, UMATILLA COUNTY, OREGON.

REGISTERED  
PROFESSIONAL  
LAND SURVEYOR  
*G. Dennis Edwards*  
OREGON  
JULY 18, 1971  
G. DENNIS EDWARDS  
9 5 1  
RENEWS 12/31/2007



**OWNER'S DECLARATION:**  
I, THE OWNER OF THE LAND DESCRIBED ABOVE, HEREBY DECLARE THAT I HAVE CAUSED THIS PLAT TO BE PREPARED.  
I ACKNOWLEDGE THE EASEMENTS AS SHOWN. I HEREBY DEDICATE THE 20 FOOT IRRIGATION EASEMENT RUNNING NORTH FROM THE SOUTH LINE OF PARCEL 2 TO THE NORTH LINE OF PARCEL 2 AS SHOWN. I HEREBY VACATE THE 10 FOOT IRRIGATION EASEMENT WHICH RUNS NORTH FROM THE SOUTH LINE OF PARCEL ONE TO WHAT WAS THE SOUTH LINE OF PARCEL 1 OF PARTITION PLAT 2001-57.

*Vickie P. Meade*  
VICKIE P. MEADE

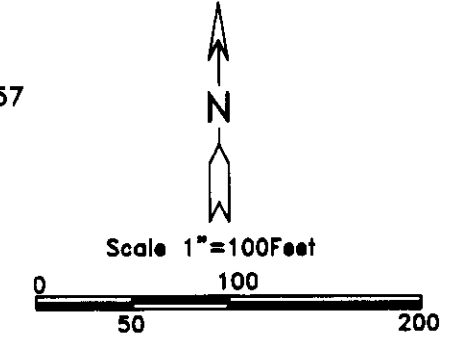
**APPROVALS**  
**HERMISTON IRRIGATION DISTRICT**  
APPROVED THIS 26<sup>th</sup> DAY OF April, 2006  
*Chuck Wilcox*  
MANAGER  
**UMATILLA COUNTY SURVEYOR**  
APPROVED THIS 27 DAY OF April, 2006  
*David H. K...*  
UMATILLA COUNTY SURVEYOR  
**UMATILLA COUNTY PLANNING**  
APPROVED THIS 16 DAY OF May, 2006  
*[Signature]*  
UMATILLA COUNTY PLANNING DIRECTOR  
**UMATILLA COUNTY COMMISSIONERS**  
APPROVED THIS 16 DAY OF MAY, 2006  
*Dennis J. Roberts*  
CHAIRMAN  
*Emile M. Holman*  
COMMISSIONER  
*William S. Hunsell*  
COMMISSIONER  
**UMATILLA COUNTY ASSESSOR & TAX COLLECTOR**  
TAXES ARE PAID IN FULL.  
APPROVED THIS 16<sup>th</sup> DAY OF May, 2006  
*Paul Chalmer by Shirley Wintburn*  
UMATILLA COUNTY TAX ASSESSOR  
*Randy Schull*  
UMATILLA COUNTY TAX COLLECTOR

STATE OF OREGON }  
COUNTY OF UMATILLA }  
SUBSCRIBED, AND SWORN BEFORE ME ON THIS  
26 DAY OF April, 2006  
*Georgia Dunaway*  
NOTARY PUBLIC FOR OREGON  
*Georgia Dunaway*  
PRINTED NAME  
COMMISSION NO. 360246  
MY COMMISSION EXPIRES 9-27-06

STATE OF OREGON, }  
COUNTY OF UMATILLA }  
I certify that this instrument was received and recorded  
ON May 19, 2006  
at 11:00 o'clock Am., in the record of  
PLATS of said County.  
YEAR NUMBER Slide  
2006 11

**OFFICE OF COUNTY RECORDS**  
By: JEAN HEMPHILL Records Officer  
Fees \$ 50.00 No. 2006-5010096

**LEGEND:**  
● FOUND 5/8" IRON REBAR WITH PLASTIC CAP #951, ME PARTITION PLATS 1999-02 & 2001-57  
○ SET 5/8"x30" IRON REBAR WITH PLASTIC CAP #951  
(000) OF RECORD, PARTITION PLAT 2001-57



THIS IS AN EXACT COPY: *G. Dennis Edwards*  
G. DENNIS EDWARDS

04/25/2006 JOB# S-MEAD2  
EDWARDS SURVEYING P.O. BOX 783  
541-567-3336 HERMISTON, OREGON 97838  
DRAWN BY NJF/JMC

RECEIVED BY  
Umatilla County Surveyor  
Date 5-06  
Drawn by KK  
No. 06-374-B