

REAL PROPERTY DESCRIPTION

A tract of land located in the South Half of the South Half of Section 18, Township 5 North, Range 28 East, W.M., Umatilla County, Oregon, described as follows:

Beginning at the Southeast Corner of said Section 18, said point being the "INITIAL POINT" for this description; thence North 89°56'05" West along the South line of said Section 18 a distance of 148.12 feet to the Southeast corner of that tract of land conveyed to Corporation of the Presiding Bishop of the Church of Jesus Christ of Latter Day Saints by Warranty Deed recorded at Reel 30, Page 1878, Deed Records; thence North 00°03'55" East along the East line of said Church Tract a distance of 420.00 feet; thence North 89°56'05" West along the North line of said Church Tract a distance of 258.88 feet; thence continuing along the North line of said Church Tract, on the arc of a 233.00 foot radius curve to the right a distance of 59.94 feet (long chord bears North 82°27'39" West a distance of 59.78 feet); thence continuing along the North line of said Church Tract, on the arc of a 20.00 foot radius curve to the left a distance of 30.65 feet (long chord bears South 60°45'59" West a distance of 27.74 feet); thence continuing along the West line of said Church Tract, on the arc of a 165.00 foot radius curve to the left a distance of 85.86 feet (long chord bears South 00°23'55" West a distance of 84.52 feet); thence South 16°28'05" East, continuing along the West line of said Church Tract a distance of 170.00 feet; thence continuing along the West line of said Church Tract, on the arc of a 375.00 foot radius curve to the right a distance of 107.99 feet (long chord bears South 08°11'04" East a distance of 107.62 feet); thence South 00°03'55" West continuing along the West line of said Church Tract a distance of 50.00 feet to the South line of said Section 18; thence North 89°56'05" West along the South line of Section 18 a distance of 375.00 feet to the Southeast corner of that tract of land conveyed to Umatilla School District No. 6-R in Bargham and Sale Deed recorded at Reel 07, Page 415, Deed Records; thence North 00°03'55" East along the East line of said School Tract a distance of 434.46 feet; thence continuing along the East line of said School Tract, on the arc of a 145.00 foot radius, non-tangent curve to the left a distance of 49.37 feet (long chord bears North 09°40'38" West a distance of 49.13 feet); thence North 19°28'05" West continuing along the East line of said School Tract a distance of 428.27 feet; thence continuing along the East line of said School Tract, on the arc of a 205.00 foot radius, non-tangent curve to the right a distance of 89.78 feet (long chord bears North 08°15'11" West a distance of 88.44 feet); thence North 00°03'55" East continuing along the East line of said School Tract a distance of 50.00 feet; thence North 89°56'05" West along the North line of said School Tract a distance of 433.75 feet; thence South 33°03'55" West along the West line of said School Tract a distance of 730.00 feet to the Southeast corner of said Section 18; thence North 89°56'05" West along said South line a distance of 862.99 feet to the South one-quarter Corner of said Section 18; thence North 89°56'05" West along the South line of Section 18 a distance of 2848.18 feet to the Southwest Corner of said Section 18; thence North 00°03'55" East along the West line continuing at right;

continued from left... of said Section 18 a distance of 772.54 feet to a point on the South right-of-way line of the West Extension Irrigation District Main Canal; thence North 82°24'47" East along said right-of-way line a distance of 203.24 feet; thence North 82°22'08" East, continuing along said right-of-way line a distance of 544.16 feet; thence continuing along said right-of-way line on the arc of a 200.00 foot radius curve to the right a distance of 35.19 feet (long chord bears North 87°24'31" East a distance of 35.14 feet); thence South 87°33'05" East continuing along said right-of-way line a distance of 90.02 feet; thence continuing along said right-of-way line on the arc of a 1000.00 foot radius curve to the left a distance of 95.34 feet (long chord bears North 89°43'03" East a distance of 95.30 feet); thence North 89°56'05" East continuing along said right-of-way line a distance of 353.41 feet; thence continuing along said right-of-way line on the arc of a 1300.00 foot curve to the left a distance of 86.04 feet (long chord bears North 85°05'24" East a distance of 86.02 feet); thence North 83°11'39" East continuing along said right-of-way line a distance of 51.72 feet (long chord bears North 88°18'11" East a distance of 51.65 feet); thence South 86°25'18" East continuing along said right-of-way line a distance of 212.59 feet; thence continuing along said right-of-way line on the arc of a 1100.00 foot radius curve to the left a distance of 126.85 feet (long chord bears North 89°53'10" East a distance of 126.85 feet); thence North 88°48'59" East continuing along said right-of-way line a distance of 569.49 feet; thence North 86°20'55" East continuing along said right-of-way line a distance of 336.27 feet; thence North 86°20'49" East continuing along said right-of-way line a distance of 478.05 feet; thence North 83°21'58" East continuing along said right-of-way line a distance of 119.27 feet; thence North 84°59'25" East continuing along said right-of-way line a distance of 206.64 feet; thence North 00°05'43" East continuing along said right-of-way line a distance of 50.20 feet; thence North 89°56'05" East continuing along said right-of-way line on the arc of a 1362.32 foot radius curve to the right a distance of 274.08 feet; thence continuing along said right-of-way line on the arc of a 155.87 foot radius curve to the right a distance of 155.87 feet (long chord bears North 88°16'06" East a distance of 155.87 feet); thence continuing at right;

continued from left... 155.79 feet; thence South 88°27'14" East continuing along said right-of-way line a distance of 444.75 feet; thence continuing along said right-of-way line on the arc of a 2824.1 foot radius curve to the right a distance of 50.93 feet (long chord bears South 83°17'14" East a distance of 50.86 feet); thence South 78°07'14" East continuing along said right-of-way line a distance of 282.43 feet to a point on the East line of said Section 18; thence South 03°02'24" West along the East line of Section 18 a distance of 1053.93 feet to the "INITIAL POINT".

LINE TABLE

Table with columns: NO., BEARING, DISTANCE. Lists line segments from L1 to L21 with their respective bearings and distances.

CURVE TABLE

Table with columns: NO., DELTA, RADIUS, LENGTH, BEARING, DISTANCE. Lists curve data for curves C1 through C12.

NOTE: CURVES 5 AND 6 ARE NON-TANGENT CURVES.

LEGEND

- - FOUND 5/8" IRON PIN WITH 1 1/2" YELLOW PLASTIC CAP MARKED "OR PLS 1106, WA PLS 17372", ESTABLISHED ON SURVEY NO. 00-081-C.
○ - 5/8" IRON PIN FOUND, SURVEY NO. S-26-B.
○ - MONUMENT FOUND AS NOTED.
● - CALCULATED POINT ONLY, NOT SET FOR FOUND.

NOTE: DIMENSIONS SHOWN ON THIS PLAT ARE IDENTICAL WITH THOSE OF RECORD SURVEY NO. 00-081-C. SEE SAID SURVEY FOR ADDITIONAL CONTROL SURVEY DATA AND COMPARISON OF RECORD DIMENSIONS OF EARLIER SURVEYS. RECORD DESCRIPTION USED FOR PARTITION BOUNDARY IS "TRACT 1" OF BARGHAM AND SALE DEED TO WILLIAM M. McCLANNAHAN RECORDED AT REEL 313, PAGE 0755, DEED RECORDS.

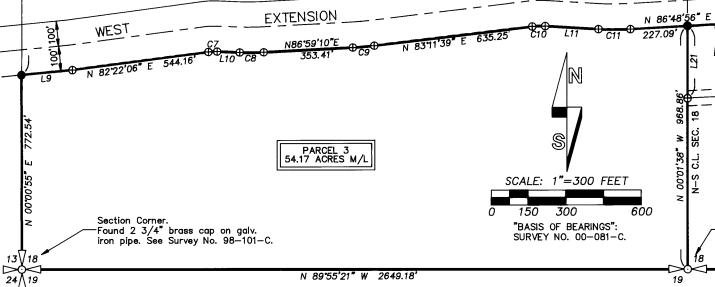
APPROVALS

EXAMINED AND APPROVED THIS 1st day of May 2000. David R. Wells, CITY OF UMATILLA ADMINISTRATOR.
EXAMINED AND APPROVED THIS 3rd DAY OF May 2000. David R. Wells, UMATILLA COUNTY SURVEYOR.
EXAMINED AND APPROVED THIS 1st DAY OF May 2000. Russell B. Brundage, WEST EXTENSION IRRIGATION DISTRICT.
TAXES ARE PAID IN FULL, THIS 3rd DAY OF May 2000. David R. Wells, UMATILLA COUNTY TAX COLLECTOR.

RECORDING INFORMATION UMATILLA COUNTY OFFICE OF COUNTY RECORDS:

STATE OF OREGON, COUNTY OF UMATILLA. I certify that this instrument was received and recorded. ON May 4, 2000 at 8:00 o'clock A.M., in the record of PLATS of said county, the following: YEAR, NUMBER, Slide 2000 18. OFFICE OF COUNTY RECORDS. By: GEORGIA DUNAWAY, Records Officer. Fees \$ 50.00 No. 2000-3690362

EXISTING EASEMENTS ON PARTITIONED LANDS: EXISTING EASEMENTS ARE IDENTIFIED ON PRELIMINARY REPORT FOR TITLE INSURANCE, PREPARED BY PIONEER TITLE COMPANY, 132 S.E. COURT STREET, PENDELTON, OREGON. ORDER NUMBER 63938, DATED JANUARY 12, 2000: 1. EASEMENT GRANTED TO PACIFIC POWER AND LIGHT COMPANY, BOOK 185, PAGE 229, DEED RECORDS. (BLANKET EASEMENT, UNDEFINED LOCATION). 2. INGRESS-EGRESS EASEMENT FOR UMATILLA SCHOOL DISTRICT NO. 6-R, REEL 10, PAGE 352 & REEL 11, PAGE 1136, DEED RECORDS. (SHOW). 3. EASEMENT GRANTED TO UMATILLA ELECTRIC COOPERATIVE ASSOCIATION, REEL 258, PAGE 498, DEED RECORDS. (SHOW). 4. EASEMENT FOR ACCESS AND UTILITIES, REEL 368, PAGE 0820, DEED RECORDS.



OWNER'S DECLARATION

I, WILLIAM M. McCLANNAHAN, DO HEREBY ACKNOWLEDGE THAT THIS PARTITION PLAT WAS PREPARED WITH MY KNOWLEDGE AND CONSENT AND THIS LAND PARTITIONED IN ACCORDANCE WITH ORS CHAPTER 92, AS REVISED, AND UMATILLA CITY ORDINANCE. I HEREBY ACKNOWLEDGE EXISTING EASEMENTS NOTED OR SHOWN ON THIS PLAT.

WILLIAM M. McCLANNAHAN, OWNER. SIGNED AND SWORN BEFORE ME THIS 1st DAY OF May 2000.

Notary Public for the State of Oregon: David W. Halley. MY COMMISSION EXPIRES: 12/29/01.



SURVEYOR'S CERTIFICATE

AND NARRATIVE

I HEREBY CERTIFY THAT I HAVE CORRECTLY SHOWN PARCELS 1, 2, AND 3 OF THIS PARTITION PLAT IN ACCORDANCE WITH ORS CHAPTER 92, AS REVISED AND THE UMATILLA COUNTY DEVELOPMENT ORDINANCE. THE BOUNDARIES OF THE PARCELS ARE MONUMENTED AS SHOWN. SEE SURVEY NO. 00-081-C FOR SECONDARY DETERMINATION AND COMPARISON OF MEASURED LINES WITH EARLIER RECORD SURVEY MEASUREMENTS.

THIS PARTITION SURVEY WAS MADE AT THE REQUEST OF WILLIAM M. McCLANNAHAN, OWNER, AND MJB DEVELOPMENT, FUTURE SUBDIVISOR. THIS SURVEY WAS MADE WITH LEICA GEODETIC GPS RECEIVERS OPERATED IN REAL TIME KINEMATIC MODE. WILLIAM R. WELLS

I CERTIFY THIS IS AN EXACT COPY OF PARTITION PLAT NO. 2000-18. Will R. Wells, WILLIAM R. WELLS, PLS

REGISTERED PROFESSIONAL LAND SURVEYOR. Will R. Wells, OREGON, JULY 22, 1977, WILLIAM R. WELLS 1106, RENEWS 6/30/00

WILLIAM R. WELLS, PLS 357 NE HWY. 11 P.O. BOX 1696 PENDELTON, OR 97801 PHONE: (541) 276-6362 DATE: 02/23/00 DR. BY: DMT CK. BY: WRW NO. 99-670

PROJECT: PARTITION PLAT FOR: WILLIAM M. McCLANNAHAN & MJB DEVELOPMENT LOCATED IN THE S1/2 S1/2 OF SECTION 18, T52N, R22E, W.M., CITY OF UMATILLA, UMATILLA COUNTY, OREGON.