

JARMON-PINE CITY SECTION PLAT
 BUTTER CREEK ROAD
 WIDTH = 60'

2N

See Page 13

45° 37' 30"

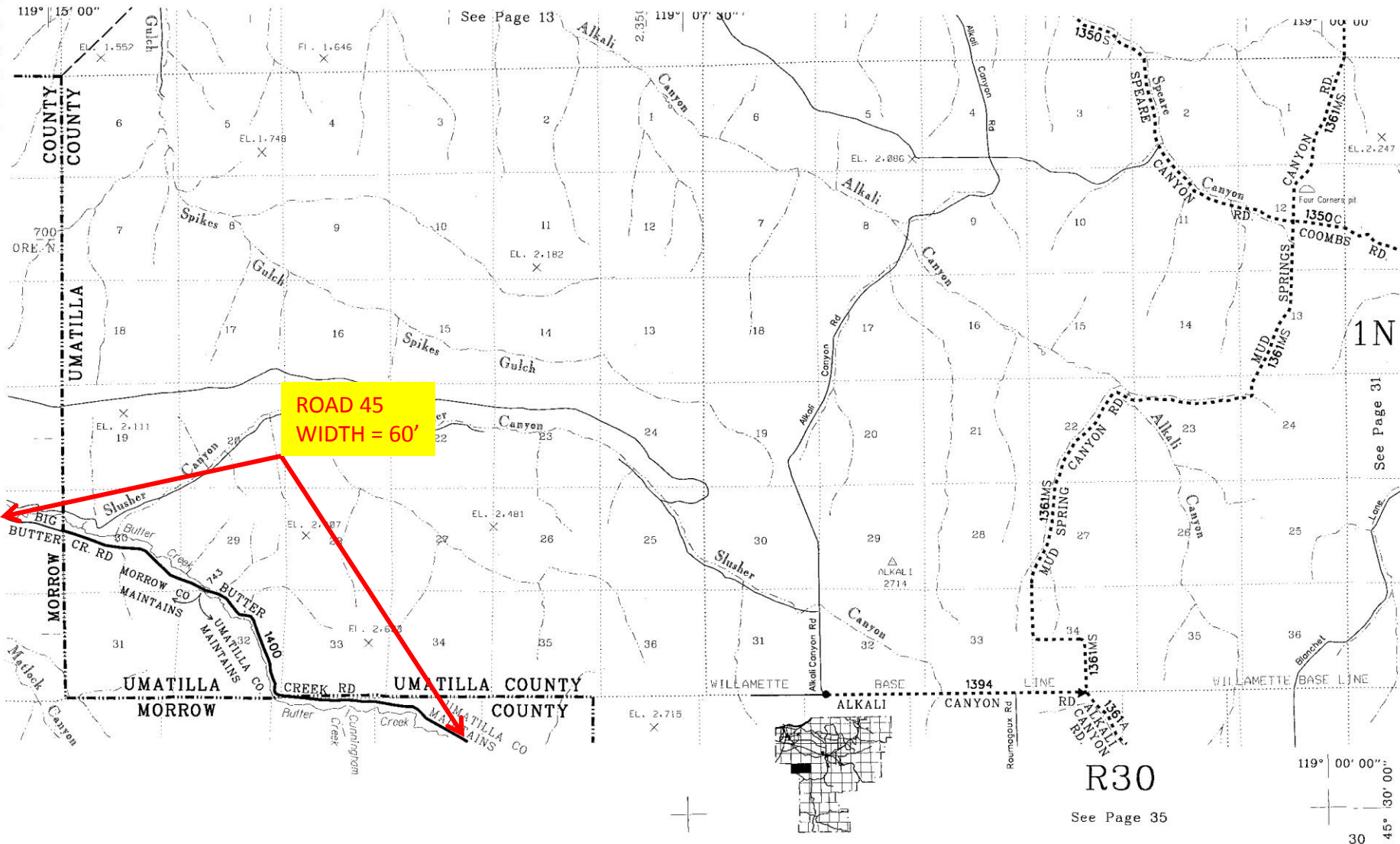
119° 15' 00"

12



R27

R28



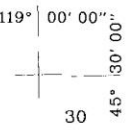
**ROAD 45
WIDTH = 60'**

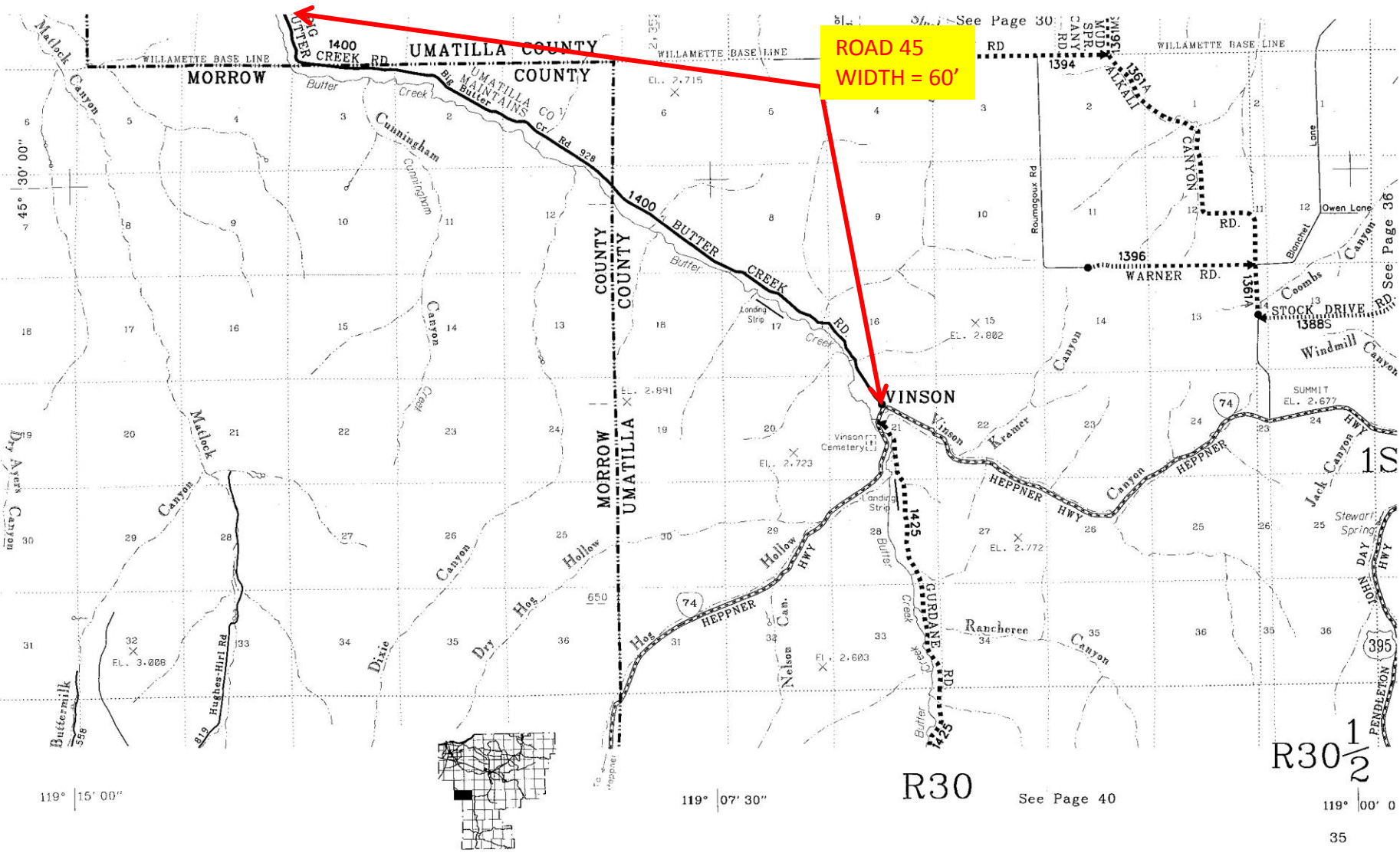
See Page 13

See Page 31

R30

See Page 35





ROAD 45
WIDTH = 60'

119° 15' 00"

119° 07' 30"

R30

See Page 40

119° 00' 0"

35

R30 $\frac{1}{2}$



See Page 36

See Page 36

See Page 36

See Page 36