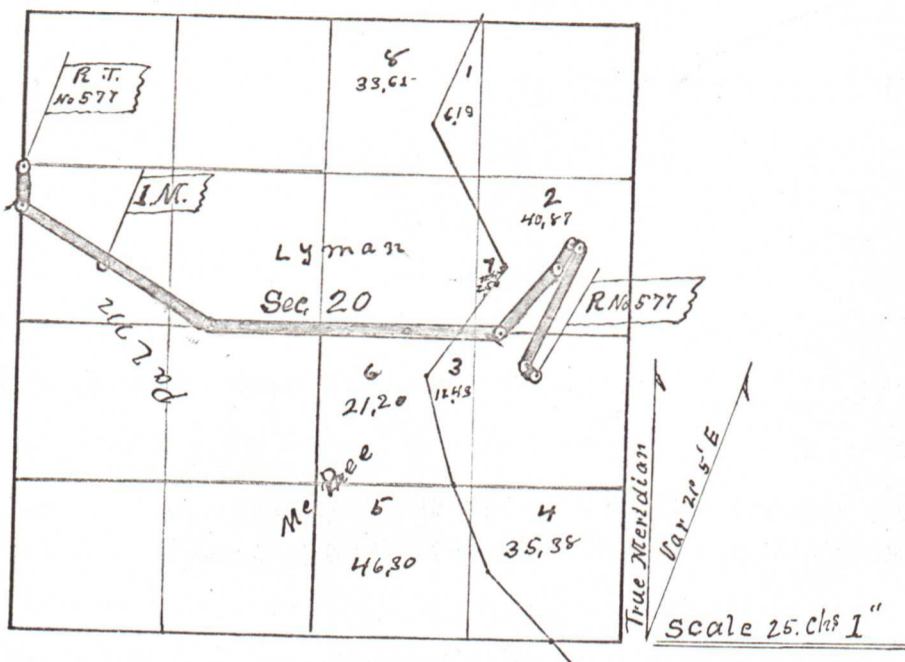


577

Plat of  
Road No. 577 T2N R32E

577



Geo. B. Sliddy and  
 and others,  
 have petitioned the County Court of said County of Lincoln at the July  
 Term, 1905, thereof, for a County Road, commencing at a point on the County road south  
 63 degrees 30 minutes west and 13.30 chains distance from the Northeast  
 Corner of the Southeast quarter of Section 20 in Township 2 North of Range  
 32 E. W. M. thence North 40 degrees west 1.25 chains; thence North 21  
 degrees 45 minutes east 16.90 chains; thence North 53 degrees 30 minutes  
 west 55/100 chains; thence south 32 degrees west 3.20 chains; thence south  
 40 degrees 20 minutes west 10.66 chains; thence west 37.65 chains; thence  
 North 60 degrees west 32 chains; thence North 4.05 chains to the Northwest  
 corner of the Southwest quarter of the Northwest quarter of Section 20  
 Township 2 North of Range 32 E. W. M.